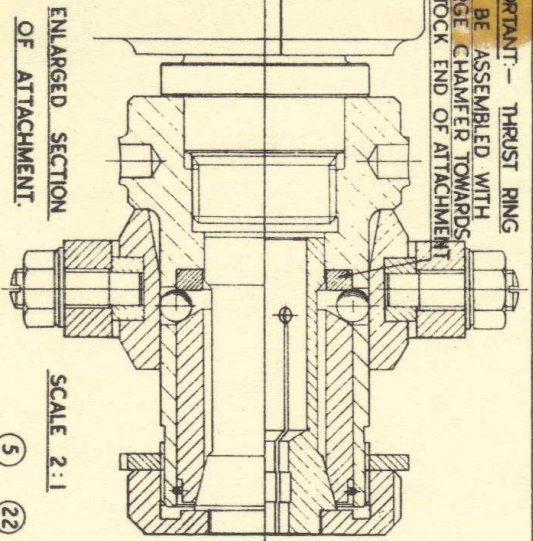


IMPORTANT:— THRUST RING TO BE ASSEMBLED WITH LARGE CHAMFER TOWARDS H-STOCK END OF ATTACHMENT.

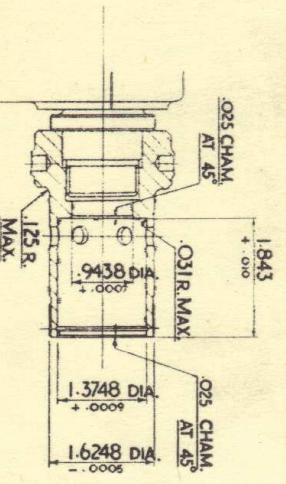
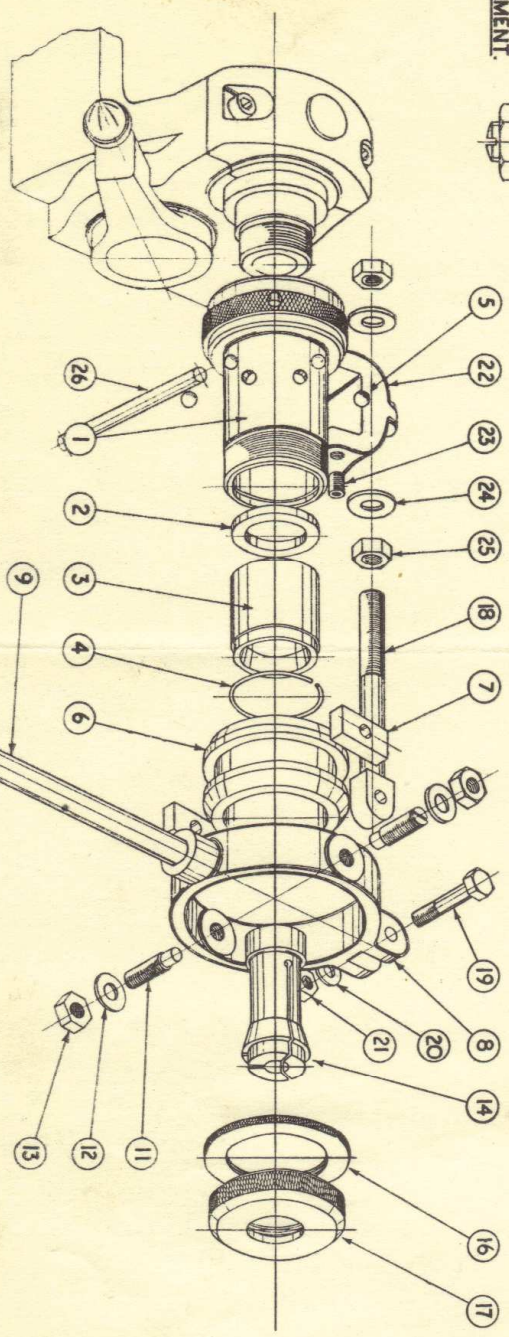


ENLARGED SECTION OF ATTACHMENT.

SCALE 2:1

REF. No.	DESCRIPTION.	No. OFF.	PART No.
1	BODY. ML7 LATHE	1	73/1963.
1	BODY. M-TYPE LATHE	1	D4/1907/2.
1	BODY. ML5 LATHE	1	MO 278/2.
1	BODY. ME, ML2 & 4. LATHES	1	MF 442/2.
1	BODY. ML6. LATHE	1	MO 300.
2	THRUST RING.	1	MW/1313.
3	SLEEVE.	1	MW/1302.
4	CIR-CLIP.	1	D5/1908.
5	BALLS.	6	DY 1103.
6	CLOSING RING.	1	MW/1305/L.
7	TOGGLE SHOE.	2	MW/1309.
8	LEVER HANDLE.	1	MW/1300Z.
9	LEVER. HANDLE. KNOB.	1	MW/1310/2.
10	GRUBSCREW (PEG END)	1	MY 4301.
11	GRUBSCREW (PEG END)	2	MW/1311.
12	WASHER.	2	DY3204.

13	NUT.	2	MY1803.
14	COLLET.	1	
15	LOCK NUT.	1	MW/1307/L.
16	NOSE CAP.	1	MW/1304/L.
17	PIVOT BOLT. ML7 LATHE	1	75/1970.
18	PIVOT BOLT. M-TYPE LATHE	1	D5/1909.
18	PIVOT BOLT. ME, ML2, ML4. ML5 & ML6 LATHES.	1	MW/1308.
19	PIVOT SCREW.	1	MY2503.
20	WASHER.	1	DY3203.
21	NUT.	1	MY1802.
22	ANCHOR BRACKET.	1	74/1968.
23	SOCKET GRUB SCREW.	2	MY3714.
24	WASHER.	2	DY3205.
25	NUT.	2	75/1971.
26	TOMMY BAR.	1	MW/1312.



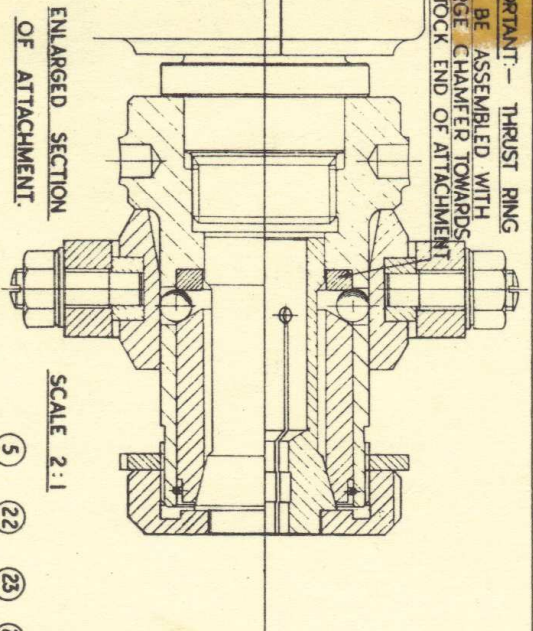
TO ACHIEVE TRUE RUNNING IN CASES WHERE THE COLLET IS NOT FITTED AT THE WORKS SCREW THE COLLET ATTACHMENT BODY INTO POSITION ON THE LATHE SPINDLE NOSE AND MACHINE THE BORE AND OUTSIDE DIA. TO THE DIMENSIONS SHOWN. MACHINING INDICATED THUS.

DRG. NO.  
MW/1314.

MYFORD ENGINEERING CO LTD BEESTON NOTTS.  
DESCRIPTION

**PICTORIAL VIEW OF COLLET ATTACHMENT.**

IMPORTANT:— THRUST RING TO BE ASSEMBLED WITH LARGE CHAMFER TOWARDS H-STOCK END OF ATTACHMENT.

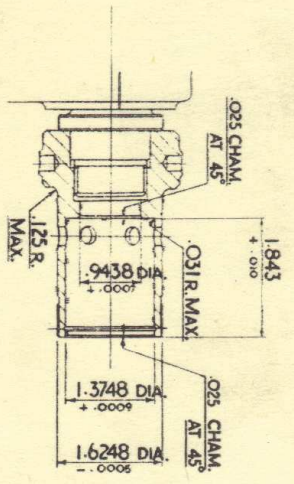
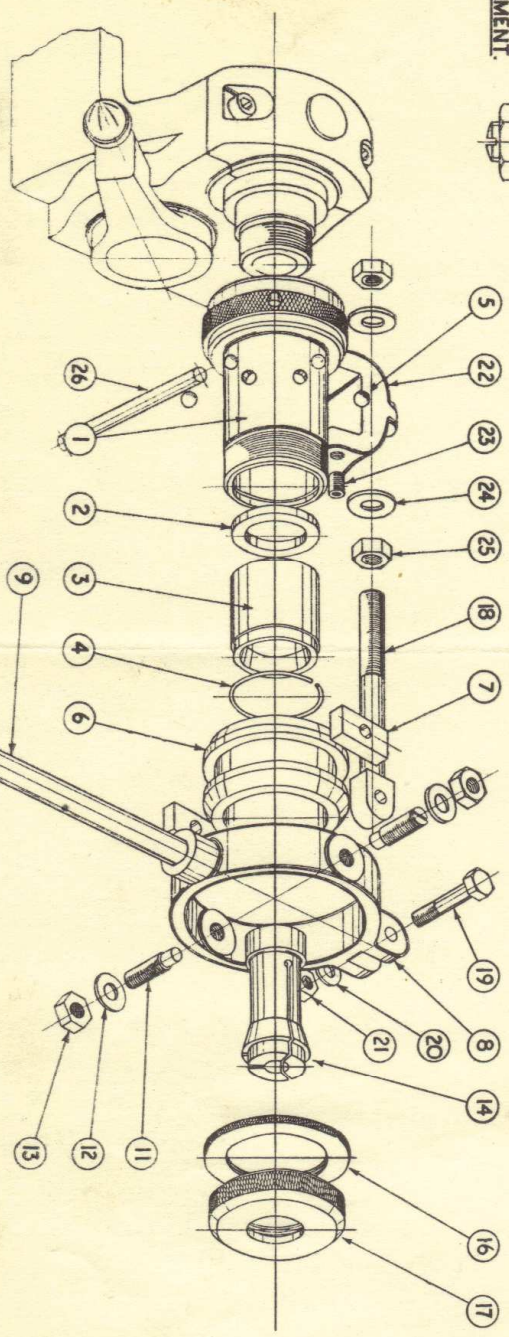


ENLARGED SECTION OF ATTACHMENT.

SCALE 2:1

REF. No.	DESCRIPTION.	No. OFF.	PART No.
1	BODY. ML7 LATHE	1	73/1963.
1	BODY. M-TYPE LATHE	1	D4/1907/2.
1	BODY. ML5 LATHE	1	MO 278/2.
1	BODY. ME, ML2 & 4. LATHES	1	MF.4.4/2/2.
1	BODY. ML6. LATHE	1	MO 300.
2	THRUST RING.	1	MW/1313.
3	SLEEVE.	1	MW/1302.
4	CIR-CLIP.	1	D5/1908.
5	BALLS.	6	DY 1103.
6	CLOSING RING.	2	MW/1305/L.
7	TOGGLE SHOE.	1	MW/1309.
8	LEVER HANDLE.	1	MW/1300Z.
9	LEVER HANDLE.	1	MW/1300Z.
10	BAKELITE KNOB.	1	MY4301.
11	GRUBSCREW (PEG END)	2	MW/1311.
12	WASHER.	2	DY3204.

13	NUT.	2	MY1803.
14	COLLET.	1	
15	LOCK NUT.	1	MW/1307/L.
16	NOSE CAP.	1	MW/1304/L.
17	PIVOT BOLT. ML7 LATHE	1	75/1970.
18	PIVOT BOLT. M-TYPE LATHE	1	D5/1909.
18	PIVOT BOLT. ME, ML2, ML4 ML5 & ML6 LATHES.	1	MW/1308.
19	PIVOT SCREW.	1	MY2503.
20	WASHER.	1	DY3203.
21	NUT.	1	MY1802.
22	ANCHOR BRACKET.	1	74/1968.
23	SOCKET GRUB SCREW.	2	MY3714.
24	WASHER.	2	DY3205.
25	NUT.	2	75/1971.
26	TOMMY BAR.	1	MW/1312.



TO ACHIEVE TRUE RUNNING IN CASES WHERE THE COLLET IS NOT FITTED AT THE WORKS SCREW THE COLLET ATTACHMENT BODY INTO POSITION ON THE LATHE SPINDLE NOSE AND MACHINE THE BORE AND OUTSIDE DIA. TO THE DIMENSIONS SHOWN. MACHINING INDICATED THUS.

DRG. No.  
MW/1314.

MYFORD ENGINEERING CO LTD BEESTON NOTTS.  
DESCRIPTION

**PICTORIAL VIEW OF COLLET ATTACHMENT.**