

Myford

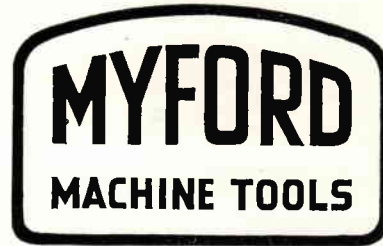
INDUSTRIAL CABINET STAND



SUPER 7B HIGH SPEED QUICK CHANGE LATHE ON 1486/3A INDUSTRIAL STAND WITH FULL COOLANT EQUIPMENT, SAFETY SWITCH GEAR AND 1487 SPLASH GUARD.

Desirable features incorporated in the Stand include the provision of a really effective Coolant Tray which is larger than the Lathe in overall size, being 46" x 20" and 2½" deep. The beading round the edge of this Tray is arranged to make swarf removal an easy operation. An effective Splash Guard with beaded edge is available for the control of splash and swarf. The Coolant Service is in unit form and can be located either inside the cabinet or externally as required. The Electrics form a complete unit which can be readily withdrawn for inspection without disconnecting any wiring. A further feature is the provision of a Lock-up Cabinet which can be supplied with loose shelf, or used to house the Coolant unit at the user's option. Machined blocks are provided to raise the Lathe and give adequate clearance for convenient operation of the apron, and the leadscrew handwheel, also the opening of the gear guard.

Construction. The Stand is of welded construction and is fabricated from heavy gauge sheet steel. The general finish is to our usual high standard.



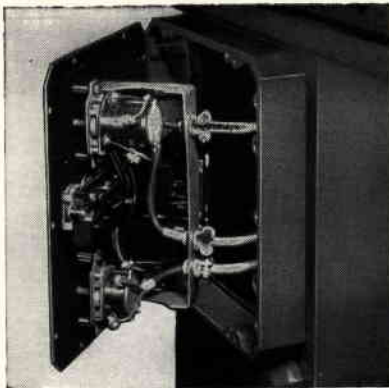
INDUSTRIAL CABINET STAND FOR ML7 & SUPER 7 LATHES

Designed to provide the most efficient method of converting ML7 and Super 7 Lathes into Floor Machines, this Stand is available either with simple electrics, or equipped with Coolant Service and full Industrial type electrical control gear. The Stand, combined with the Super 7B Quick-Change Lathe, Chucks, Four Tool Turret, Rear Tool Post and Thread Dial Indicator (as shown in the illustration) provides the ideal unit for installation in Toolroom or Production Shops.

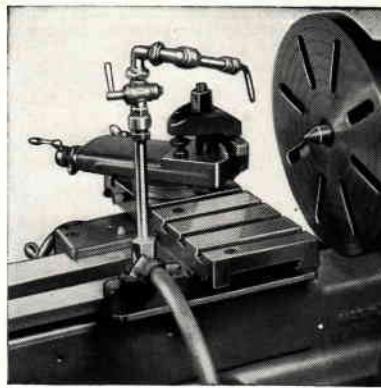
ALTERNATIVES

- 1486/1** Industrial Stand with isolator, rotary reversing switch for Lathe drive motor, shelf in tool locker, lock and two keys for locker door, and cork mat for open front shelves.
- 1486/2** Industrial Stand as above, but with push button starter and no-volt and overload releases.
- Industrial Stand** as above, complete with full coolant equipment including pump, tank, delivery and return pipes, delivery fitting for saddle with bracket, cock and telescopic pipe, pump switch, push button starter, reversing switch and isolator:—
- 1486/3A** for three phase, with coolant tank mounted internally.
- 1486/3B** for single phase, with coolant tank mounted internally.
- 1486/3C** for three phase, with coolant tank mounted externally.
- 1486/3D** for single phase, with coolant tank mounted externally.
- 1487** Splash Guard.
- Coolant equipment supplied separately** for external or internal mounting, (specify when ordering), (Internal mounting in Industrial Stand only) including pump, tank, delivery and return pipes, delivery fitting for saddle with bracket, cock and telescopic pipe, also pump switch either built into pump (external mounting only) or separately for fitting to panel on industrial stand:—
- 1488/A** for three phase.
- 1488/B** for single phase.

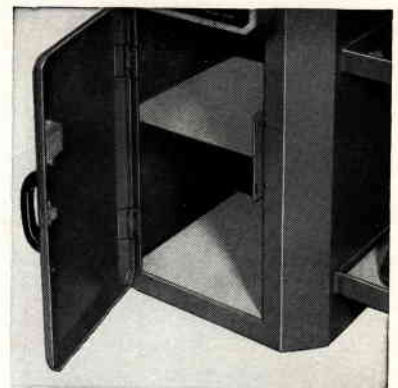
Also available for long bed lathes—add suffix "L" to catalogue number.



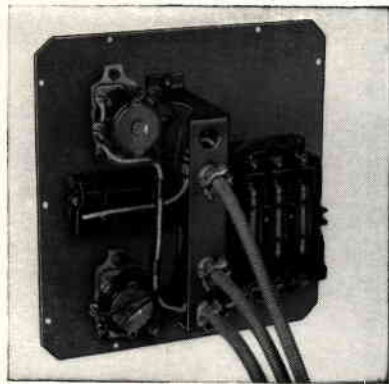
Showing the easy removal of the Panel which forms the Mounting Plate for the electrical control gear.



Telescopic Coolant Delivery Pipe shown bracketed to saddle and ready for use.



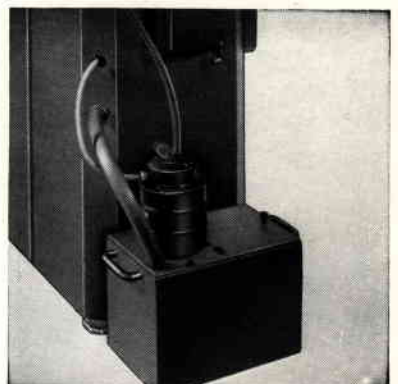
Lock-up Cabinet complete with loose shelf (stands less Coolant Service or with Coolant Service mounted externally).



Rear view of Panel withdrawn complete without disconnecting any wiring, showing sheathed leads, rotary switches and contactor starter.

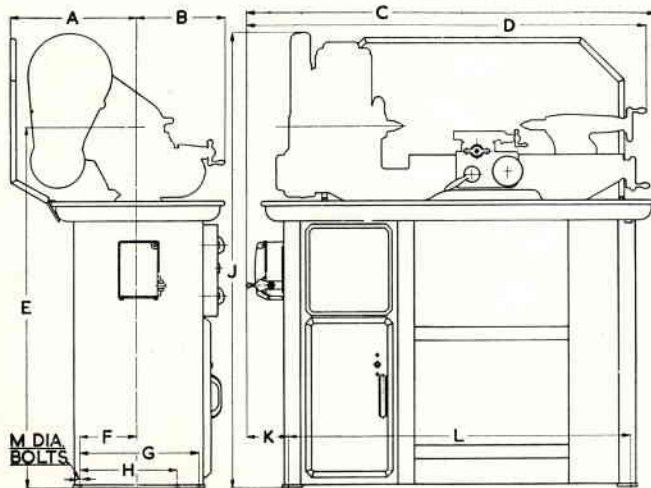


Lock-up Cabinet utilized for the internal mounting of Coolant Tank and Submersion pump.



Coolant tank and submersion pump mounted externally at side of Cabinet showing wiring, delivery and return pipes.

INSTALLATION DIAGRAM



	STANDARD BED	LONG BED
C	= 49"	58"
D	= 51" Max.	62" Max.
A	= 15"	
B	= 14" Max.	
J	= 54"	
E	= 42 $\frac{3}{8}$ "	
F	= 6 $\frac{7}{8}$ "	
G	= 14 $\frac{1}{2}$ " Crs. L.H. End	
H	= 11 $\frac{3}{8}$ " Crs. R.H. End	
K	= 5"	
L	= 40 $\frac{3}{4}$ " Crs.	49 $\frac{3}{4}$ " Crs.
M	= $\frac{3}{8}$ " Dia. Bolts.	

Designs and Specifications subject to change without notice. Illustrations not binding in detail.

M7-5M/11/69

TELEPHONE:
NOTTINGHAM
STD CODE 0602
254222 (4 lines)

MYFORD LIMITED
BEESTON NOTTINGHAM NG9 1ER ENGLAND

TELEGRAMS:
MYFORD BEESTON
NOTTINGHAM