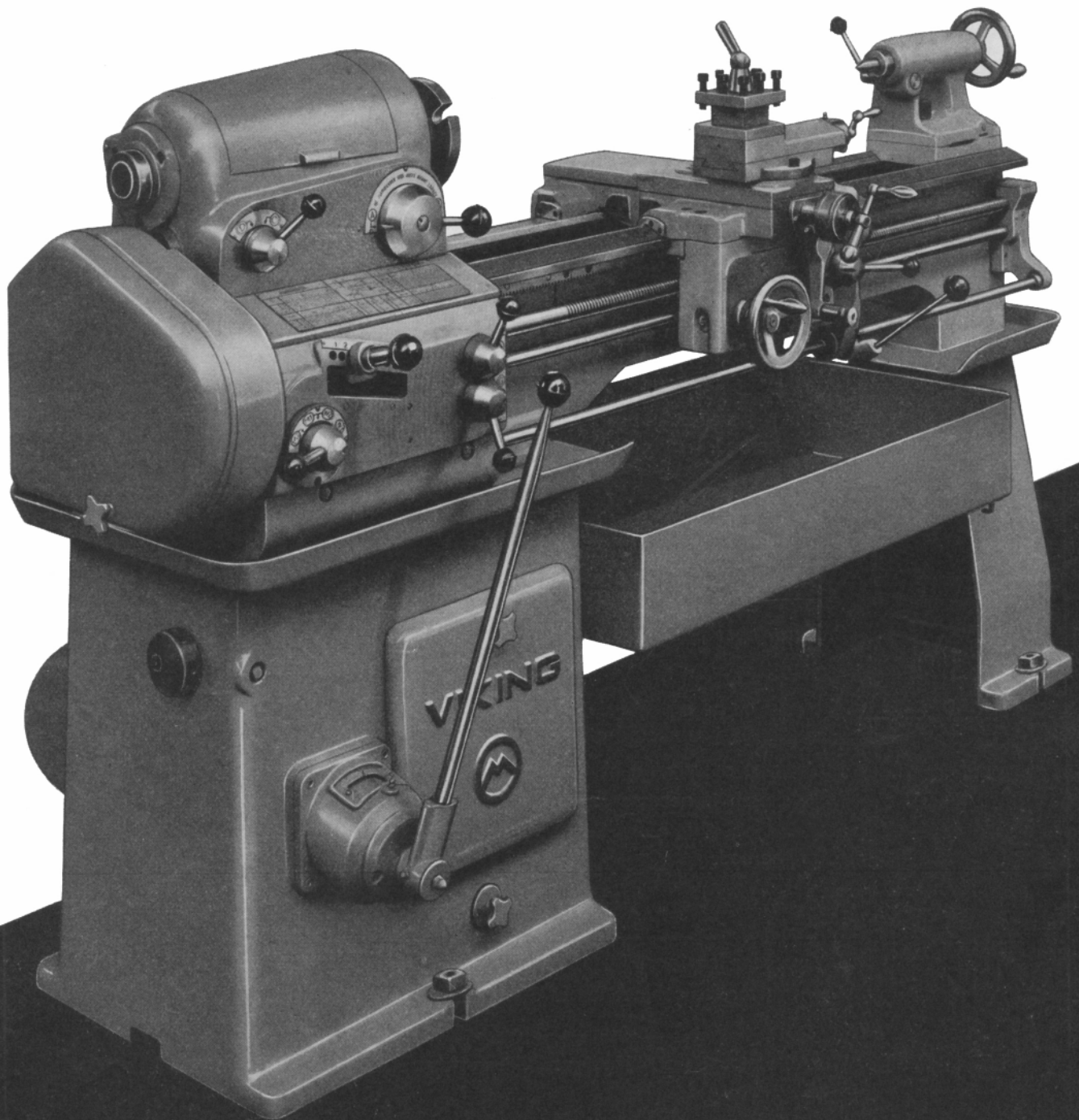


# SPARE PARTS

FOR

# VIKING



# MONDIALE

## IMPORTANT RECOMMENDATIONS.

**IN ORDER TO AVOID ERRORS WHEN ORDERING SPARE PARTS, PLEASE ADHERE STRICTLY TO THE FOLLOWING INSTRUCTIONS :**

**FIRST CASE :** The part to be ordered is represented with a number in one of the groups of this catalogue. In this case, you should mention on your order :

- 1° The part number;
- 2° The letter of the group in which the part is shown;
- 3° The type of lathe and its serial number which is stamped at the tailstock end of the bed.

**EXAMPLE :**

1. One pinion n° 72 group D, for ..... type lathe, n° (the lathe) .....
2. One leadscrew n° 65, group D, for ..... type lathe, n° (the lathe) .....
3. One handwheel n° 11, group H, for ..... type lathe, n° (the lathe) .....

**SECOND CASE :** The part to be ordered is not numbered in one of the groups of this catalogue. In this case you should mention on your order :

- 1° The description of the part;
- 2° The dimensions of the part as well as the letter of the group to which the part belongs;
- 3° The type of lathe and its serial number which is stamped at the tailstock end of the bed.

**EXAMPLE :**

1. One countersunk headscrew .....  $\varnothing$ , ..... long, for ..... type lathe, n° (the lathe) .....
2. One hexagonal head bolt .....  $\varnothing$ , ..... long, for ..... type lathe, n° (the lathe) .....
3. One taper pin .....  $\varnothing$ , ..... long, for ..... type lathe, n° (the lathe) .....

**THIRD CASE :** The part to be ordered does not appear in any of the groups of this catalogue. In this case you should give on your order :

- 1° A short description of the part;
- 2° A sketch if necessary;
- 3° The type of lathe and its serial number which is stamped at the tailstock end of the bed.

**EXAMPLE :**

1. One bed for ..... type lathe, n° (the lathe) .....
2. One rear leg for ..... type lathe, n° (the lathe) .....
3. One door for cabinet leg of ..... type lathe, n° (the lathe) .....

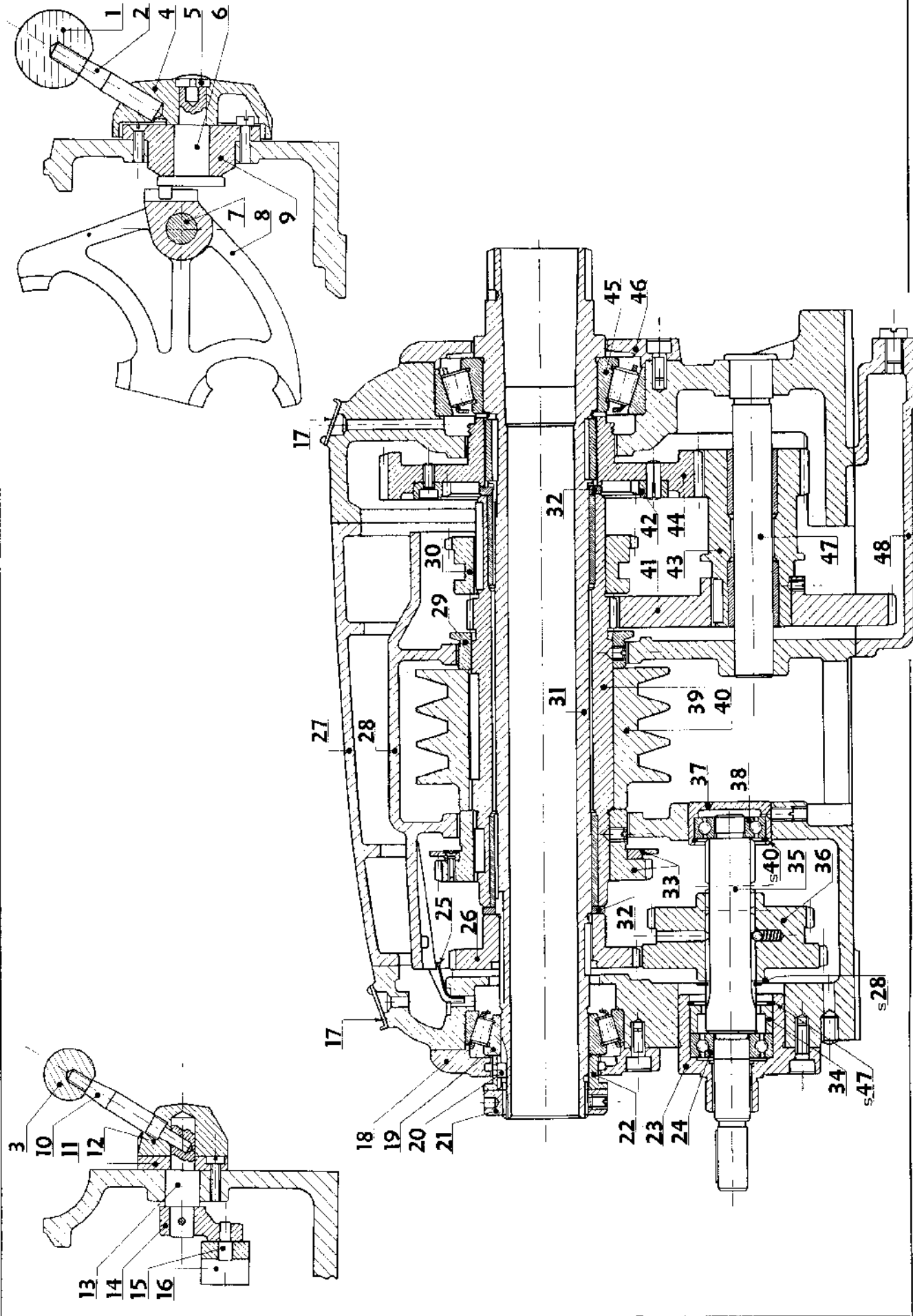
---

**MONDIALE, S. A. de Constructions Mécaniques, 55, av. de Schaerbeek, VILVORDE - BELGIUM**

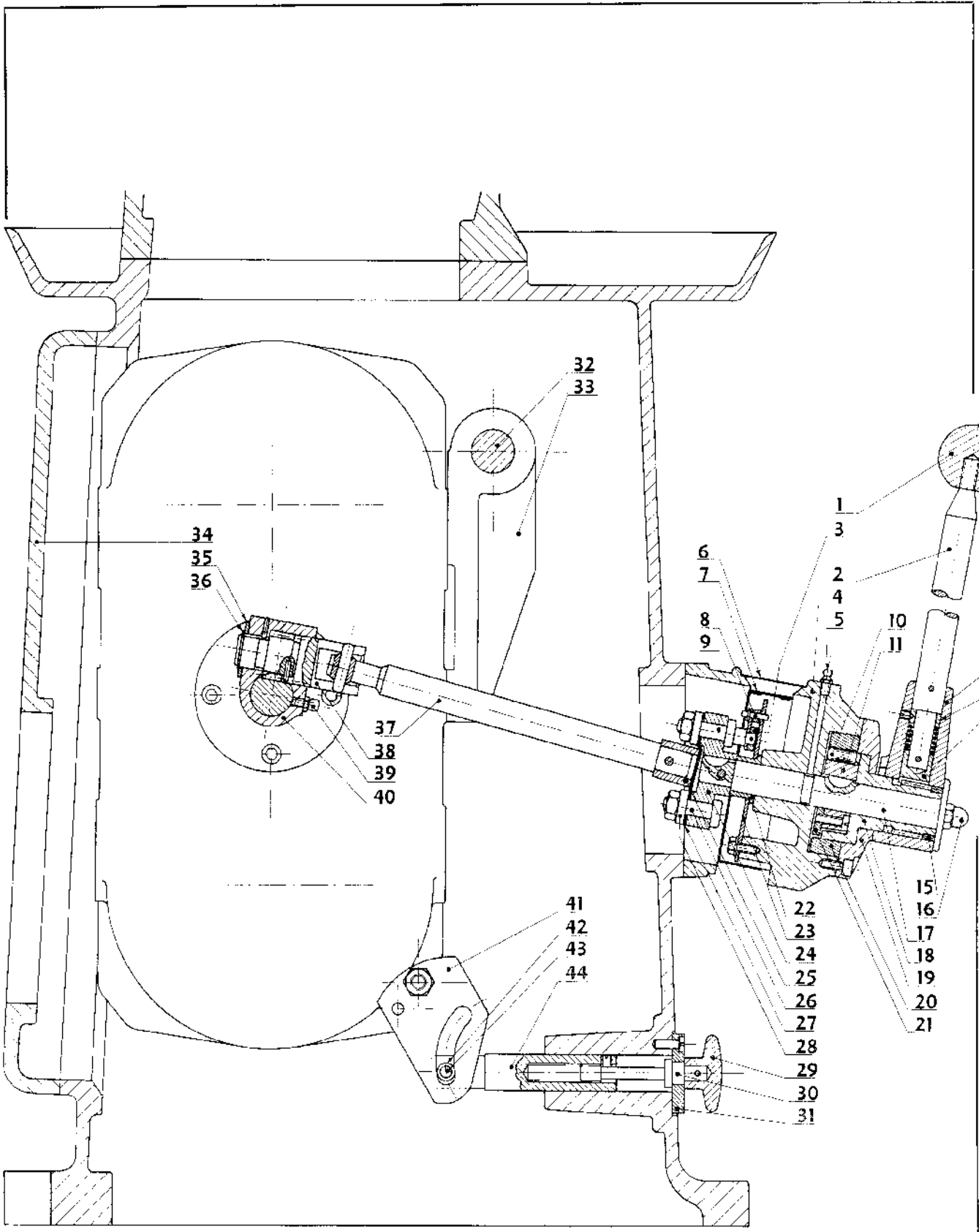
---

**AGENT :**

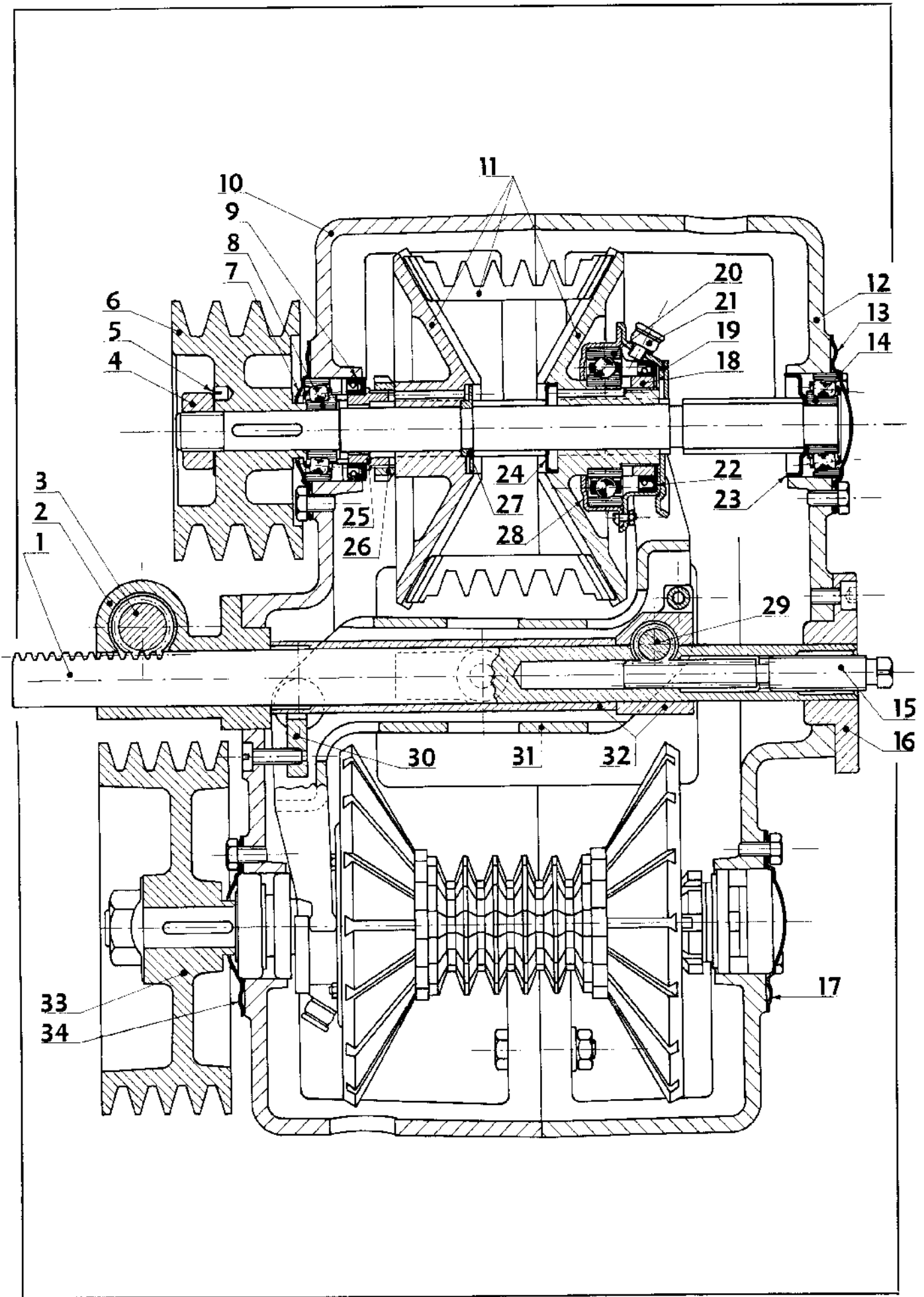
A. - HAEDSTOCK.



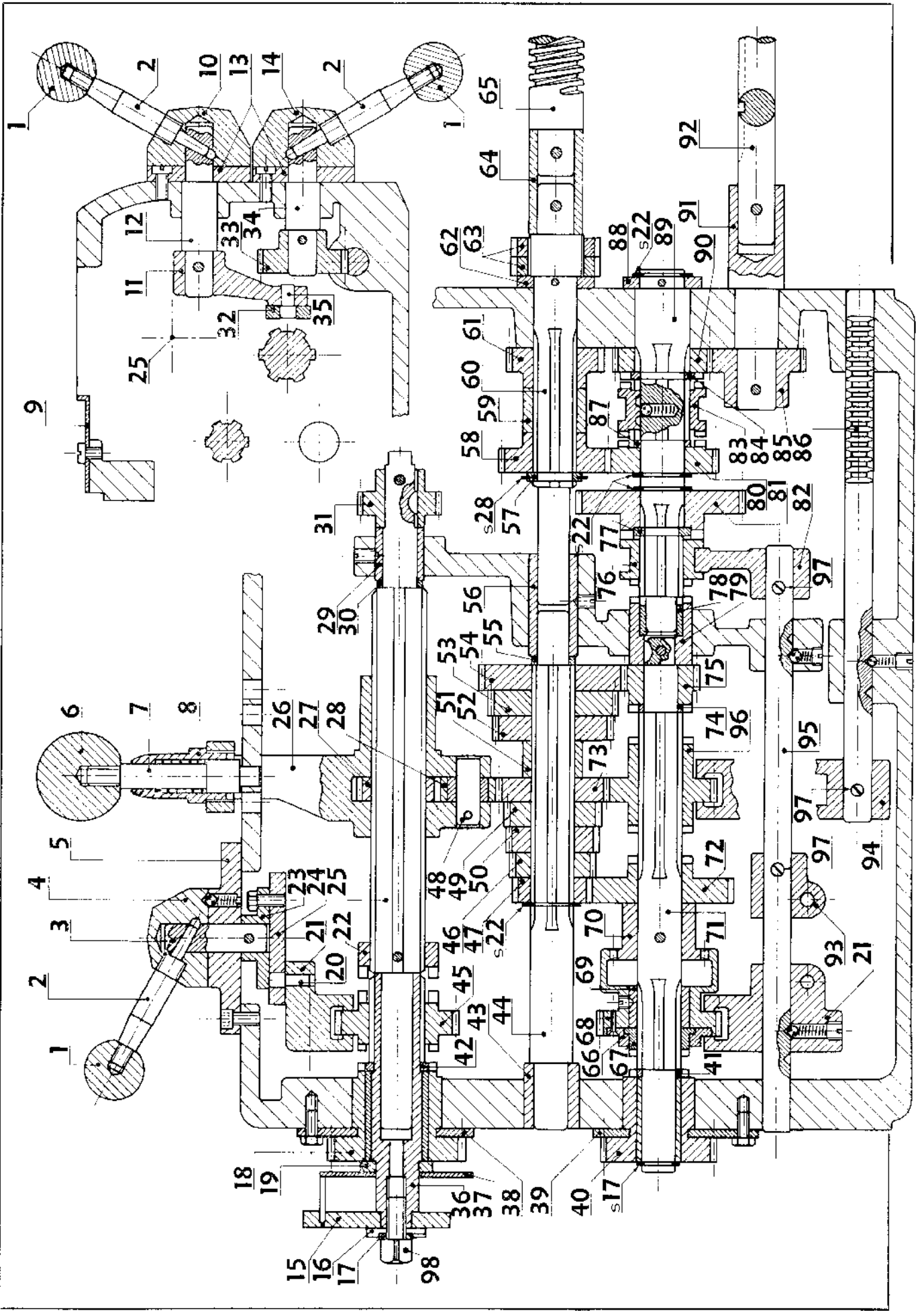
# B. - SPEED VARIATOR'S CONTROL.



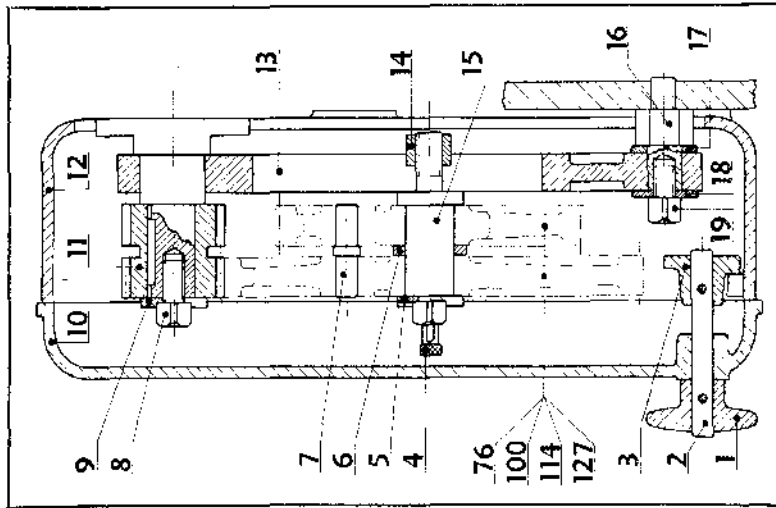
# C. - SPEED VARIATOR.



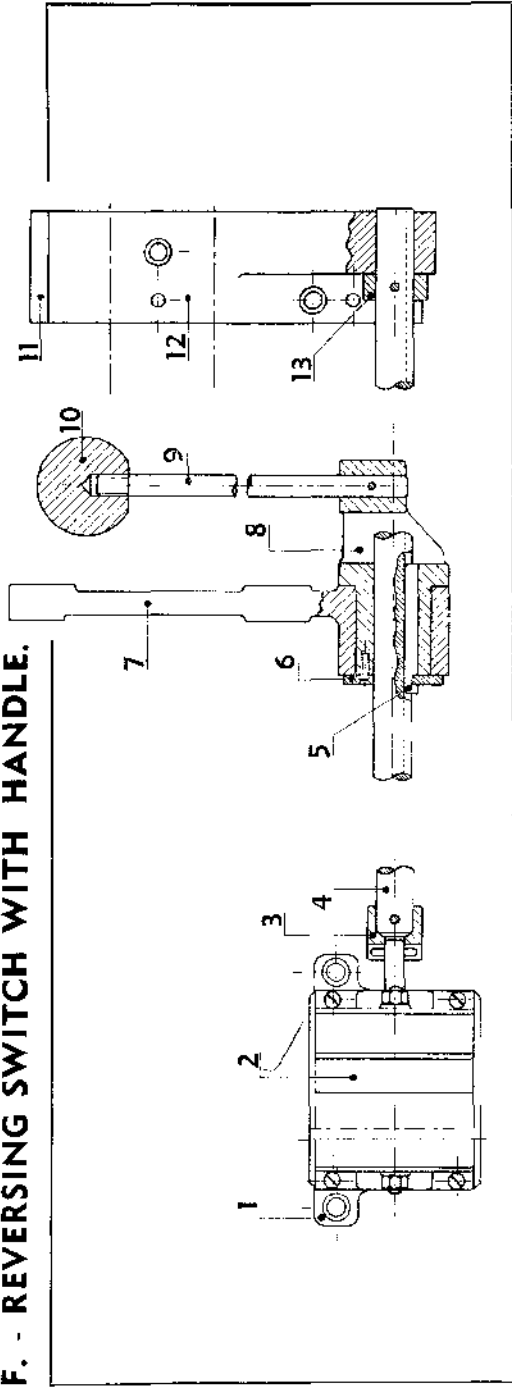
D. - UNIVERSAL NORTON GEARBOX.



**E. - SWING-FRAME.**

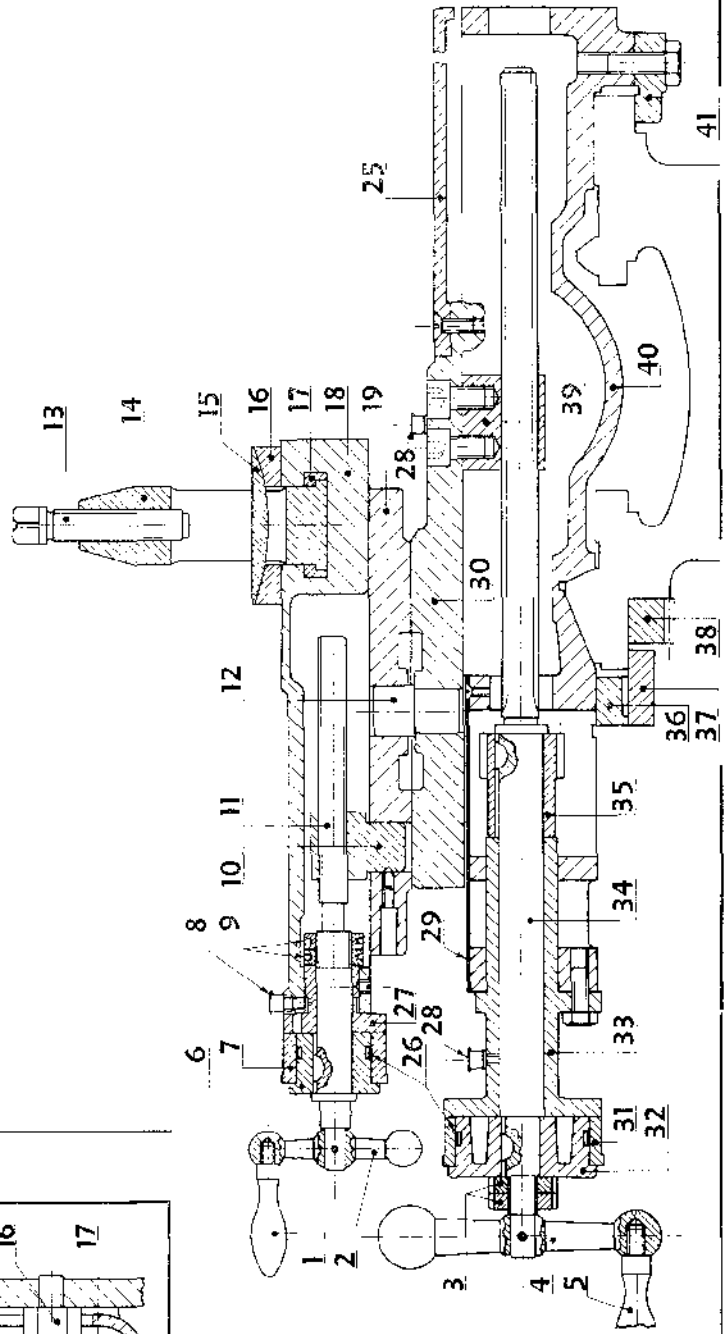


**F. - REVERSING SWITCH WITH HANDLE.**

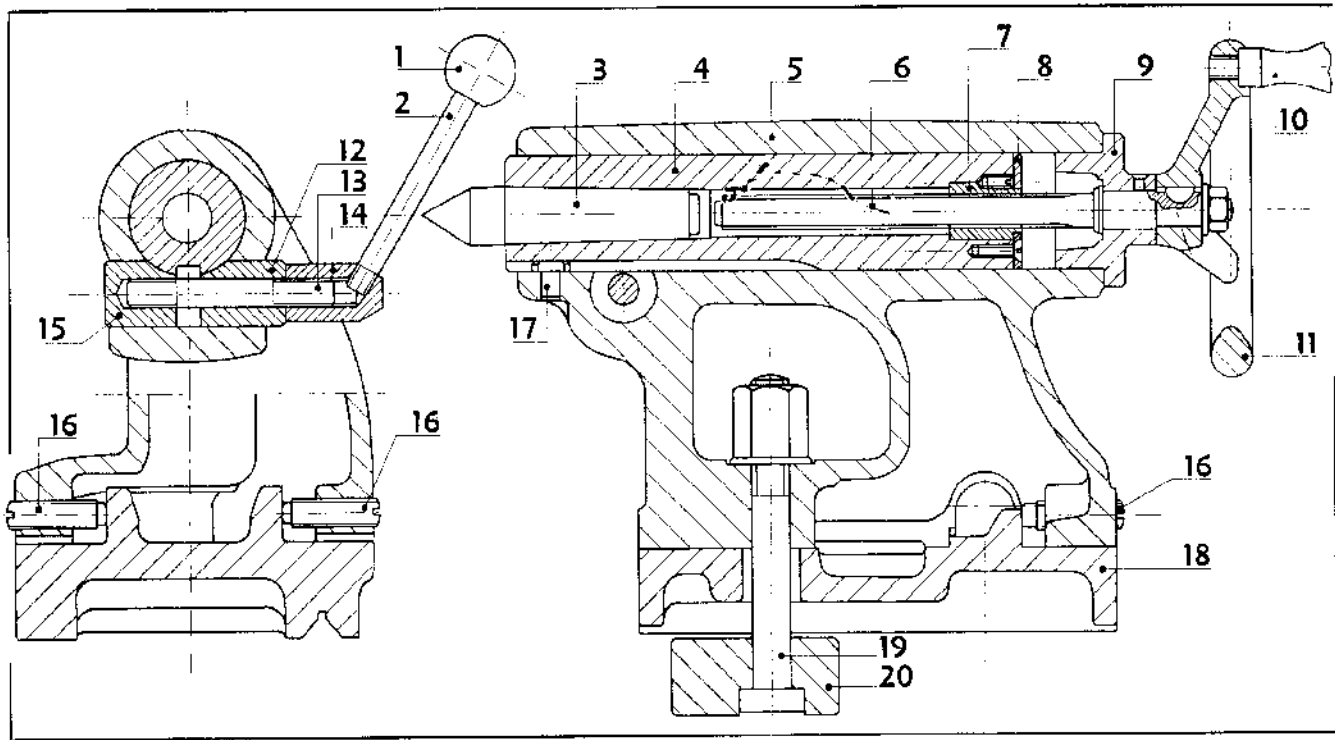


**G. - SADDLES AND SLIDES.**

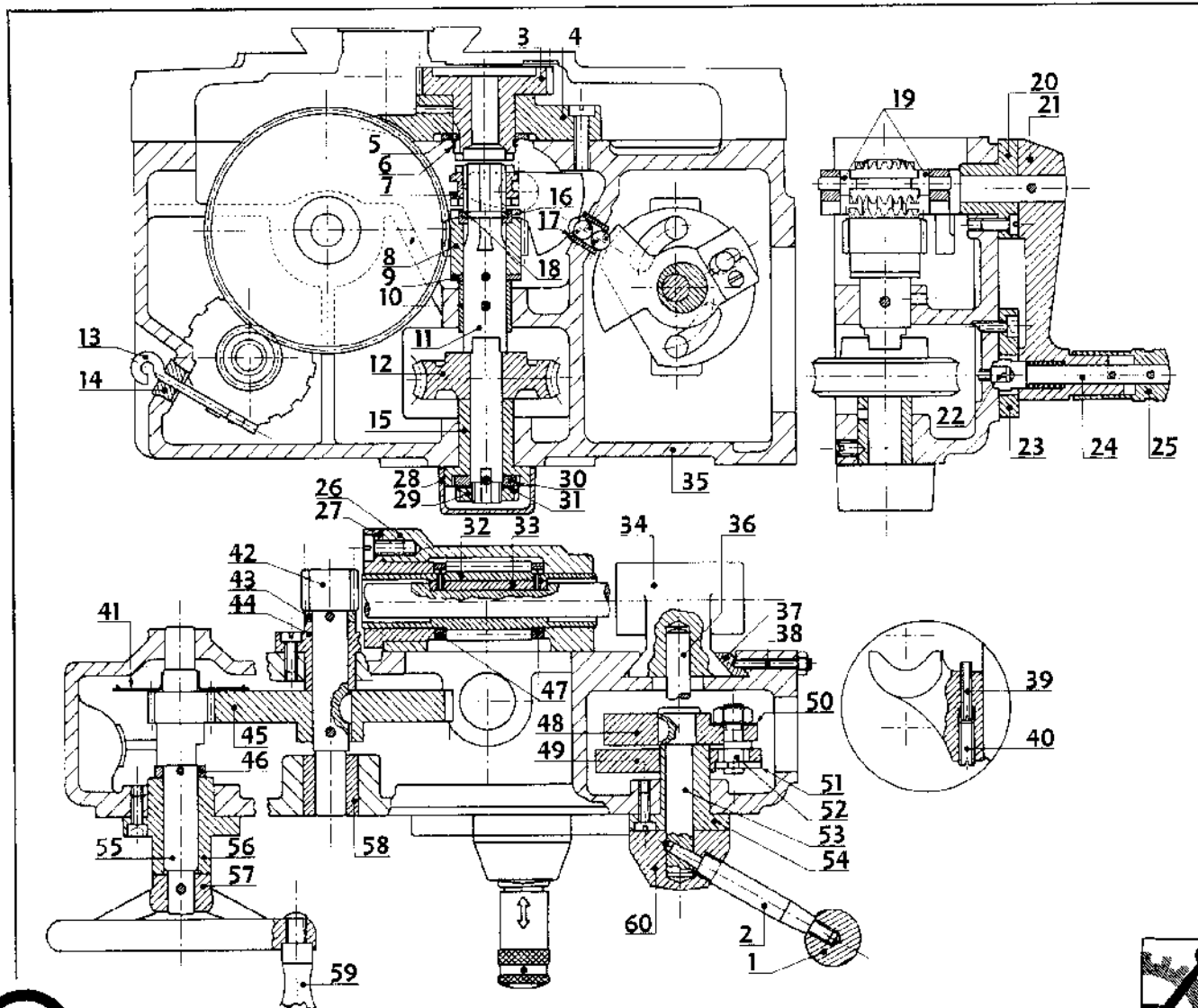
*With american type toolpost.*



# H. - TAILSTOCK.



# G.I. - APRON.



We reserve the right to make such alterations to our constructions we may consider favourable.

