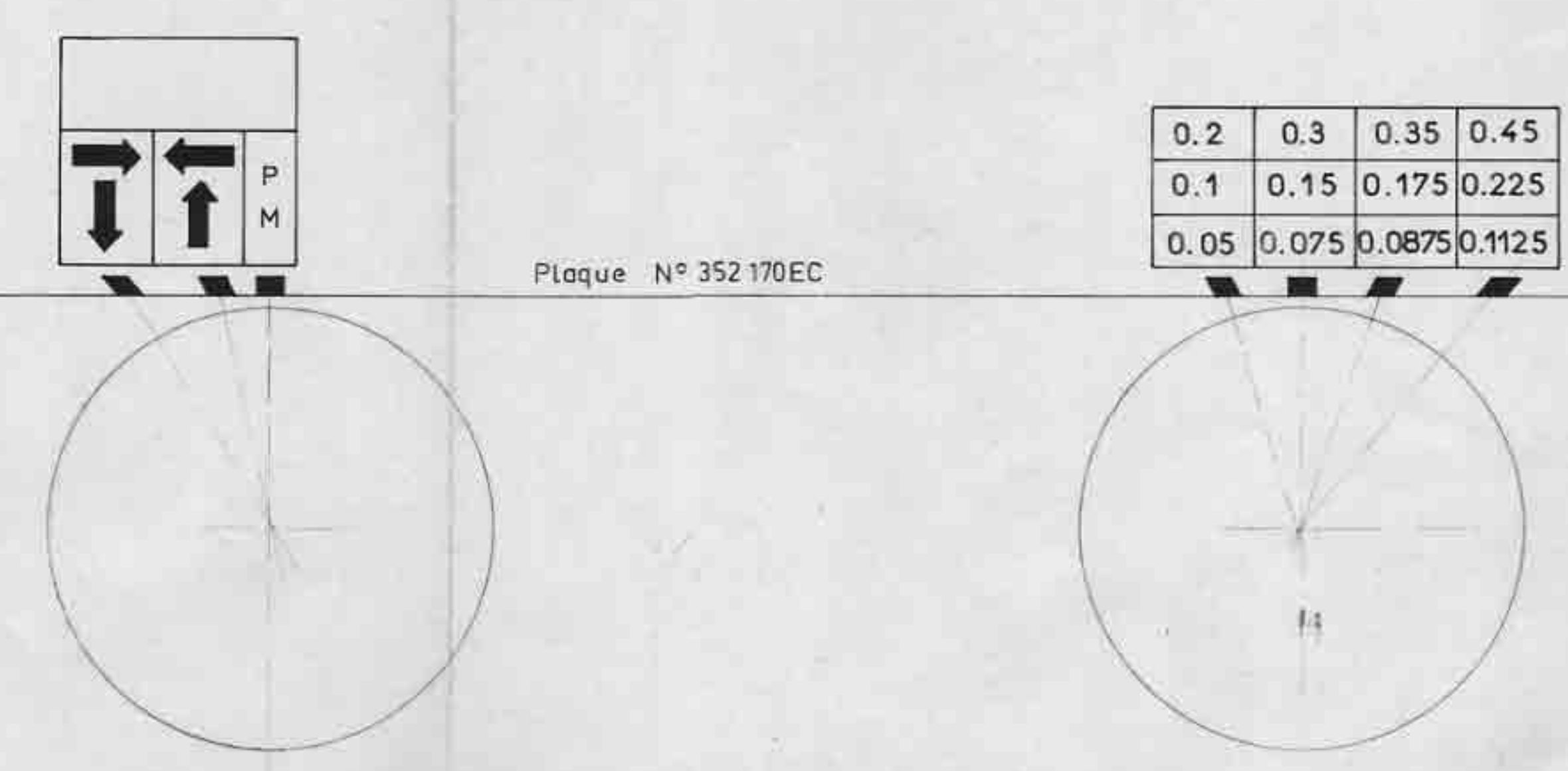
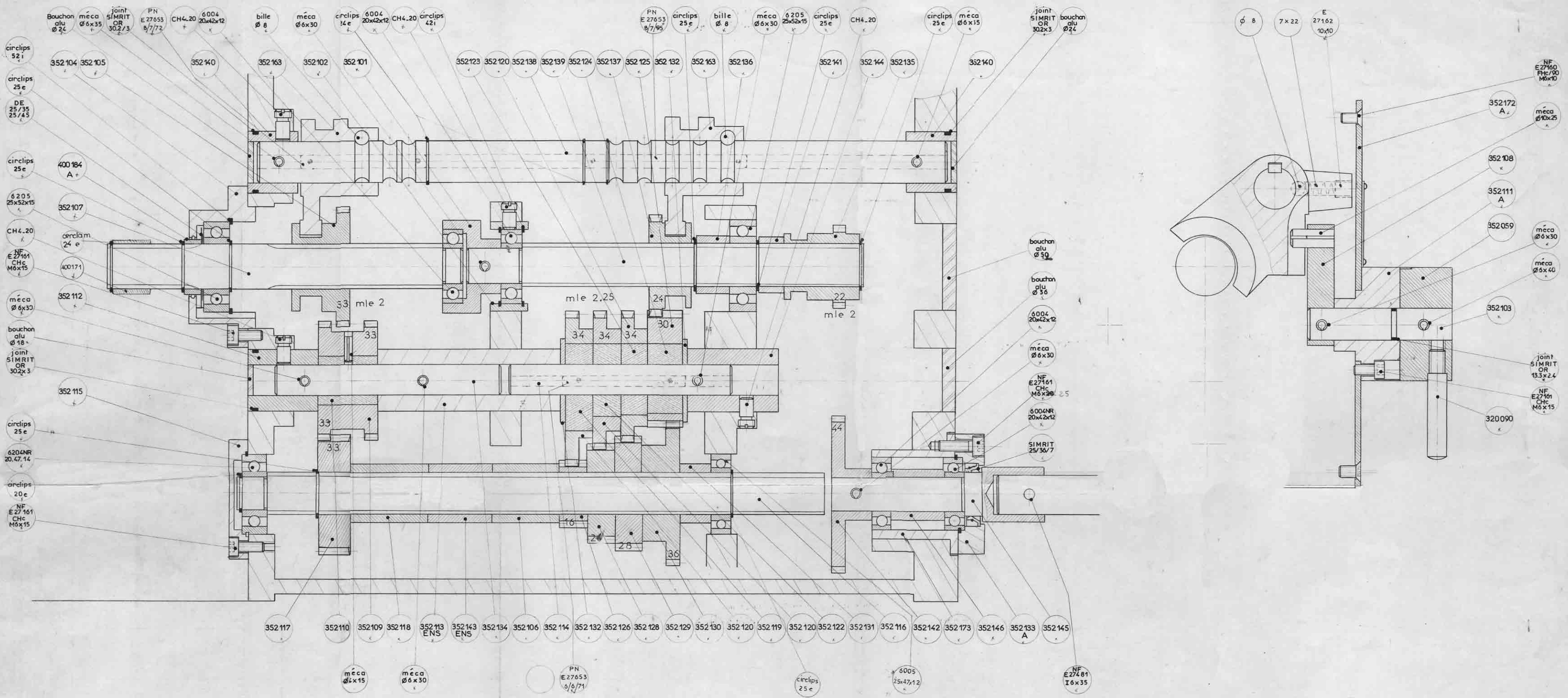
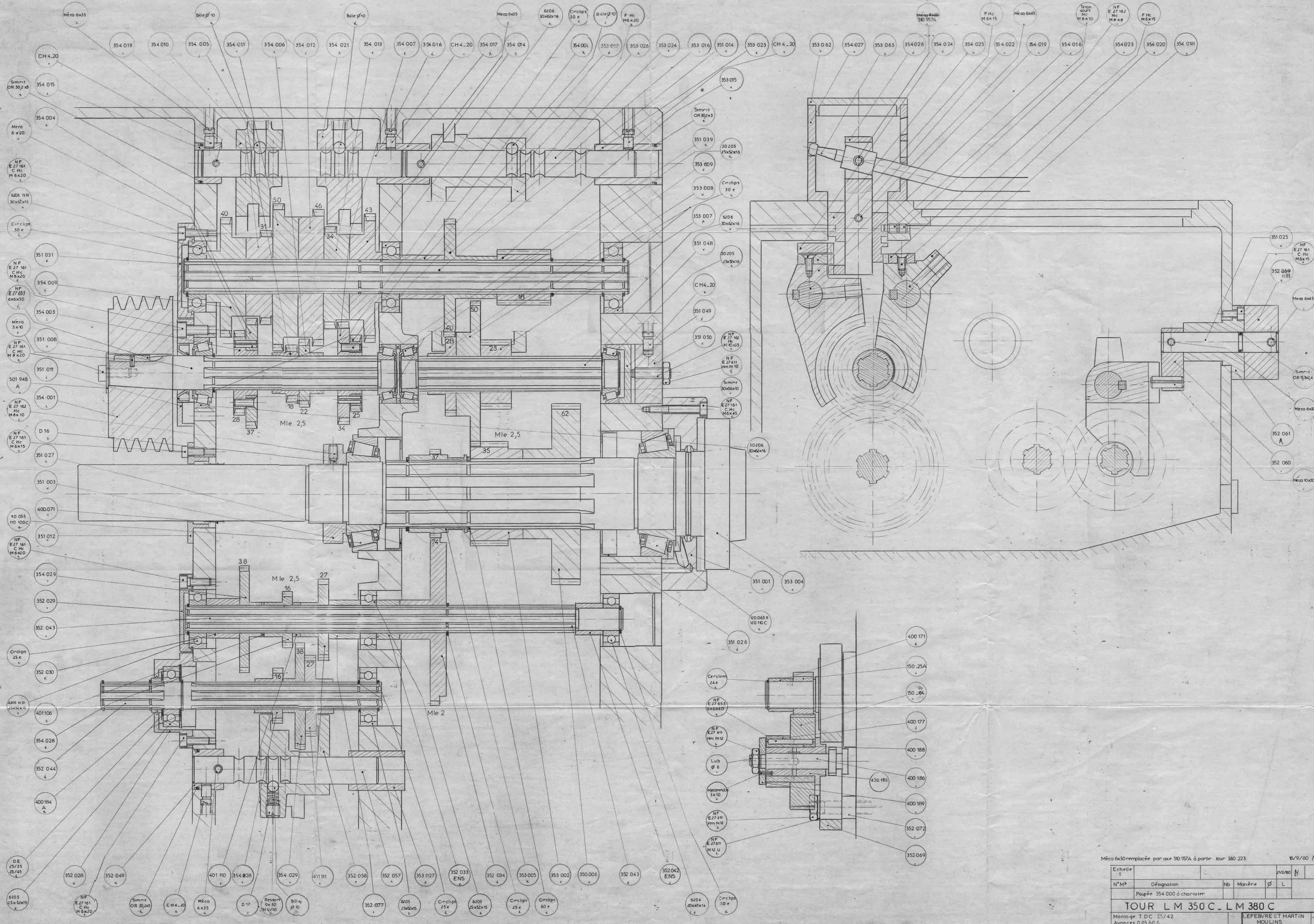


Barre abaissée de 8mm pour bouchon vidange

| | | | | | |
|----------------------------|---------------------------------|------------|----------|-------------------------------|---|
| Echelle | Usinage | Traitement | 10/10/70 | | |
| 1 | | | 30/370 | M | |
| N°Mk | Désignation | Nb | Matière | ø | L |
| | Butees longitudinales sur barre | | | | |
| TOUR LM 350 _ LM380 | | | | | |
| T0-27 | | | | LEFEBVRE ET MARTIN MOULINS | |
| | | | | 350 600 ENS 18 | |

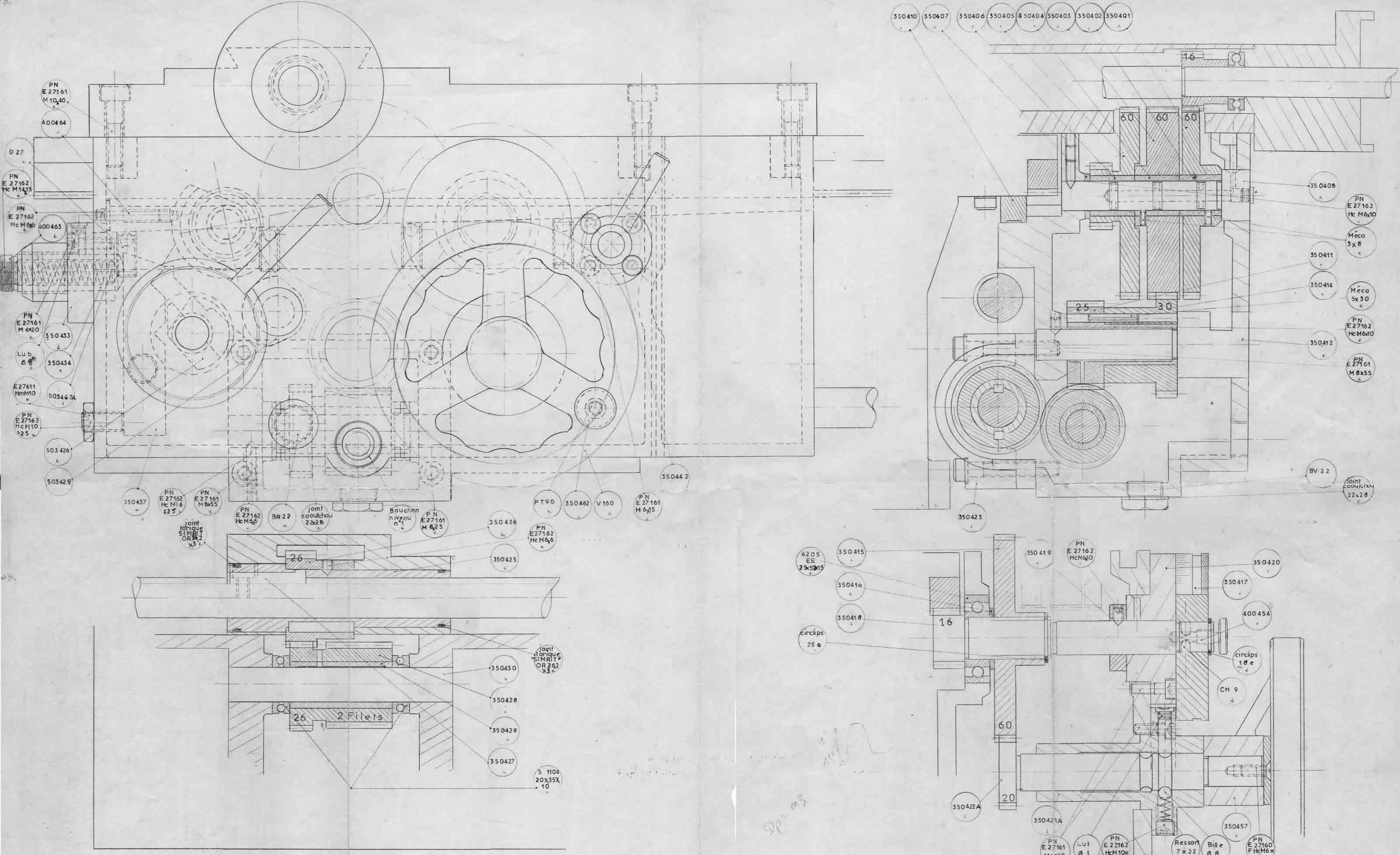


| | | | |
|--|-------------|------------|---------|
| Echelle 1 | Usinage | Traitement | 5.675 |
| N°Mle | Désignation | Nb | Matière |
| Bte des avances à chariotier | | | |
| TOUR LM 350 | | | |
| LEFEBVRE & MARTIN 03000 MOULINS 352100 ENS 2 | | | |



Meca 6x30 remplacée par axe 50 95/A à partir tour 380 223 16/9/80 M

| | | | | | |
|---------------------------------|----------------------------|----|--------------------|-----|---|
| Echelle | | | 1/2 | 1/1 | |
| N° M | Designation | Nb | Mat'ère | Ø | L |
| | Fouée 354 000 à chariotier | | | | |
| TOUR LM 350 C - LM 380 C | | | | | |
| Montage T.D.C. 25/42 | | | LEFEBVRE ET MARTIN | | |
| Avances 0,05 à 0,6 | | | MOULINS | | |
| 354 000 ENS 2 | | | | | |



350410 350407 350406 350405 350404 350403 350402 350401

PN E 27161
M 10.40
400464

D 27

PN E 27162
Hc M 14.15

PN E 27162
Hc M 6.6

PN E 27161
M 6.20

Lu b
Ø 8

E 27411
Hm 10

PN E 27162
Hc M 10
2.5

503426

503429

PN E 27162
Hc M 6
2.5

PN E 27161
M 8.55

PN E 27162
Hc M 6.6

BR 22

joint
caoutchou
2x2.8

Bouchon
niveau
n°1

PN E 27161
M 8.25

PN E 27162
Hc M 6.6

joint
torique
SIMRIT
OR 2.42
x 3

26

26

2 Filets

5 1104
20x35x
10

PT 90

350462

V 160

PN E 27161
M 6.45

PN E 27162
Hc M 6.6

350426

350425

350430

350428

350429

350427

350442

PN E 27161
M 6.45

PN E 27162
Hc M 6.6

350426

350425

350430

350428

350429

350427

5 1104
20x35x
10

62.05
EE
25x50x15

350415

350416

350418

circ clips
25 ø

16

60

20

350422A

PN E 27161
M 6.20

Lu 1
Ø 3

PN E 27162
Hc M 10.4

Ressort
7x22

Bille
Ø 8

PN E 27160
Hc M 6x
15

350423

350415

350416

350418

circ clips
25 ø

16

60

20

350422A

PN E 27161
M 6.20

Lu 1
Ø 3

PN E 27162
Hc M 10.4

Ressort
7x22

Bille
Ø 8

PN E 27160
Hc M 6x
15

350419

PN E 27162
Hc M 6.6

350417

400454

circ clips
18 ø

CH 9

60

20

350422A

PN E 27161
M 6.20

Lu 1
Ø 3

PN E 27162
Hc M 10.4

Ressort
7x22

Bille
Ø 8

PN E 27160
Hc M 6x
15

16

60

60

60

350408

PN E 27162
Hc M 6.10

Meca
3x8

350411

350414

Meca
5x30

PN E 27162
Hc M 6.10

350412

PN E 27161
M 8x55

BV 22

joint
caoutchou
22x2.8

350420

350417

400454

circ clips
18 ø

CH 9

60

20

350422A

PN E 27161
M 6.20

Lu 1
Ø 3

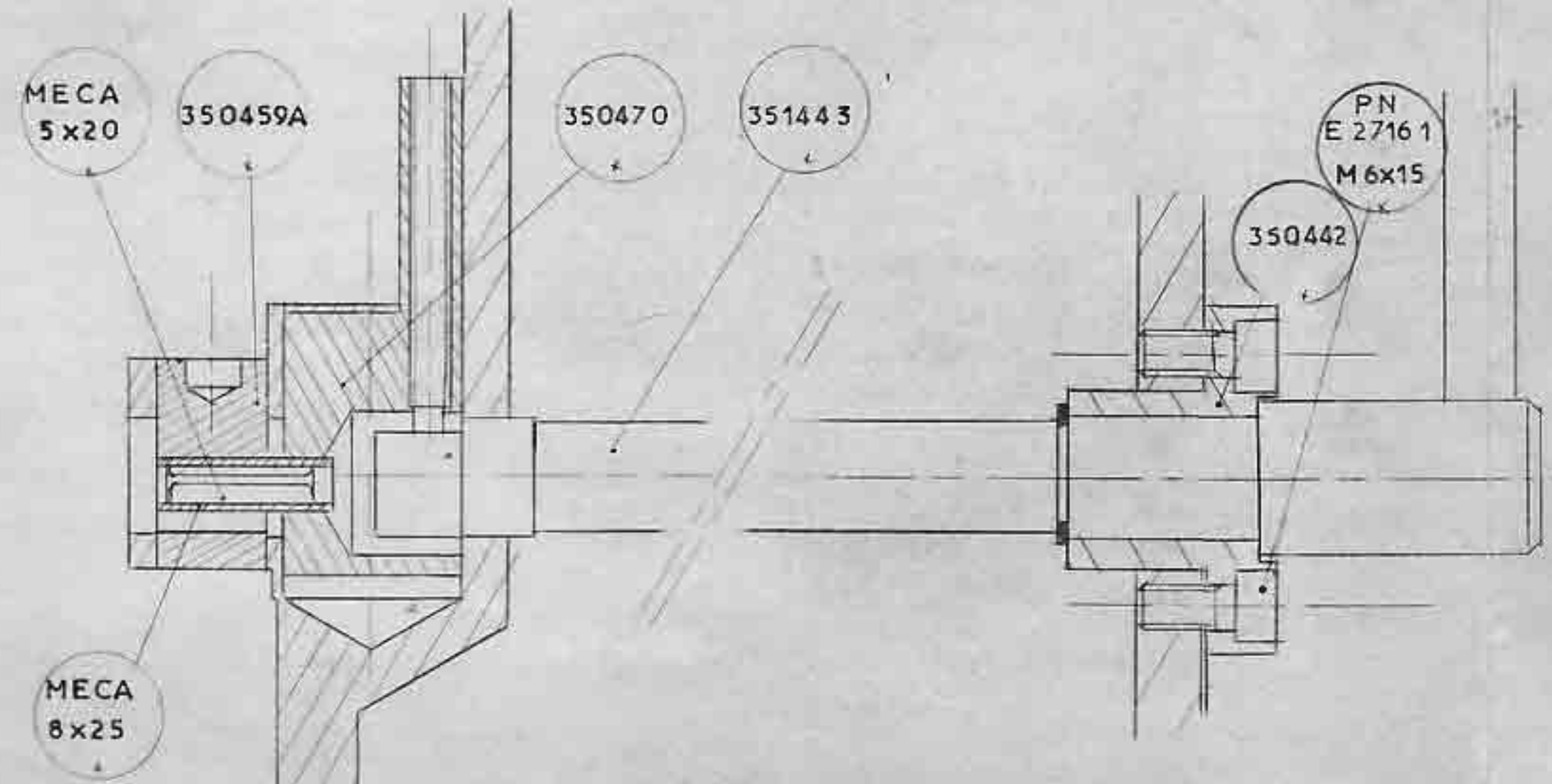
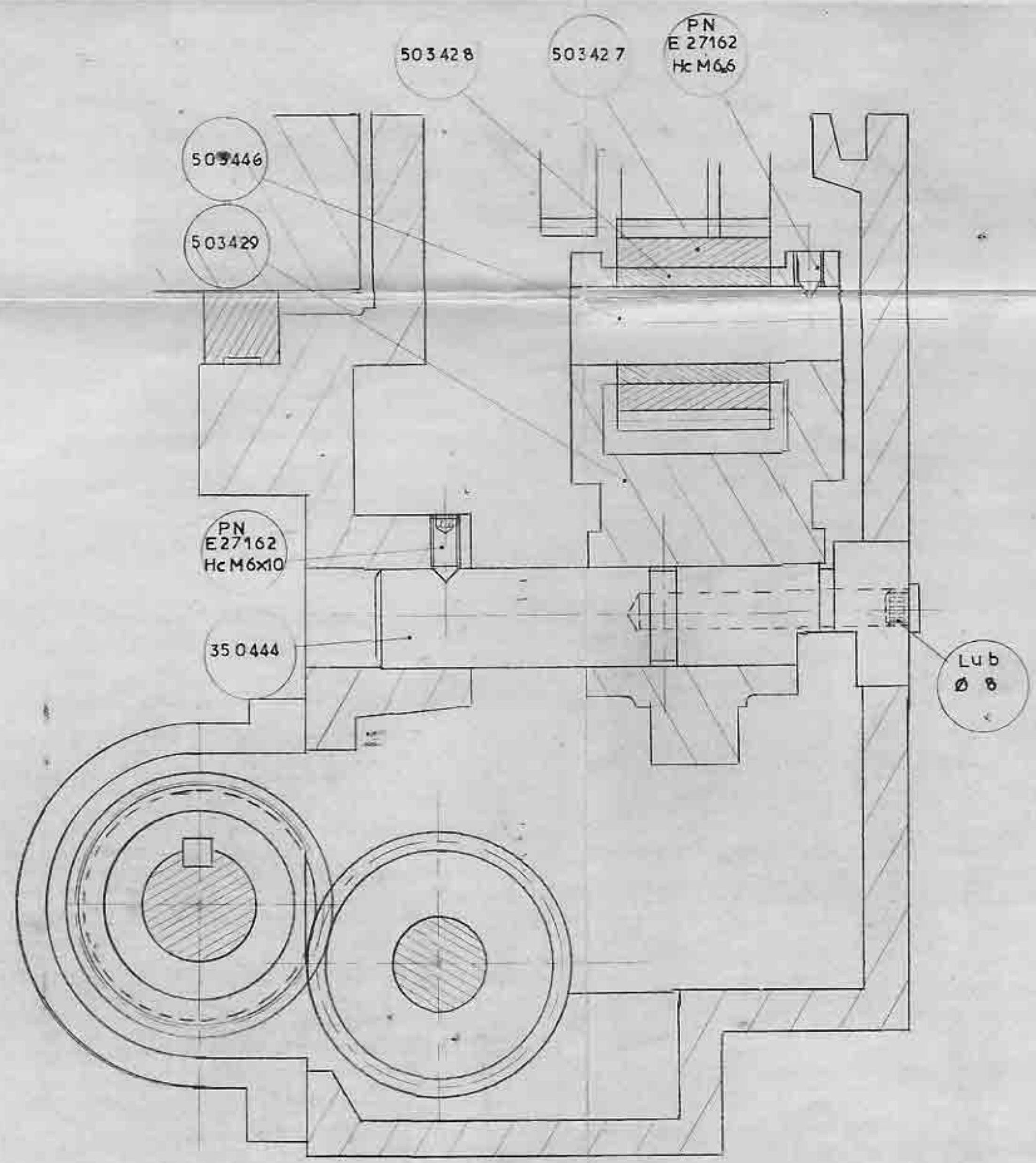
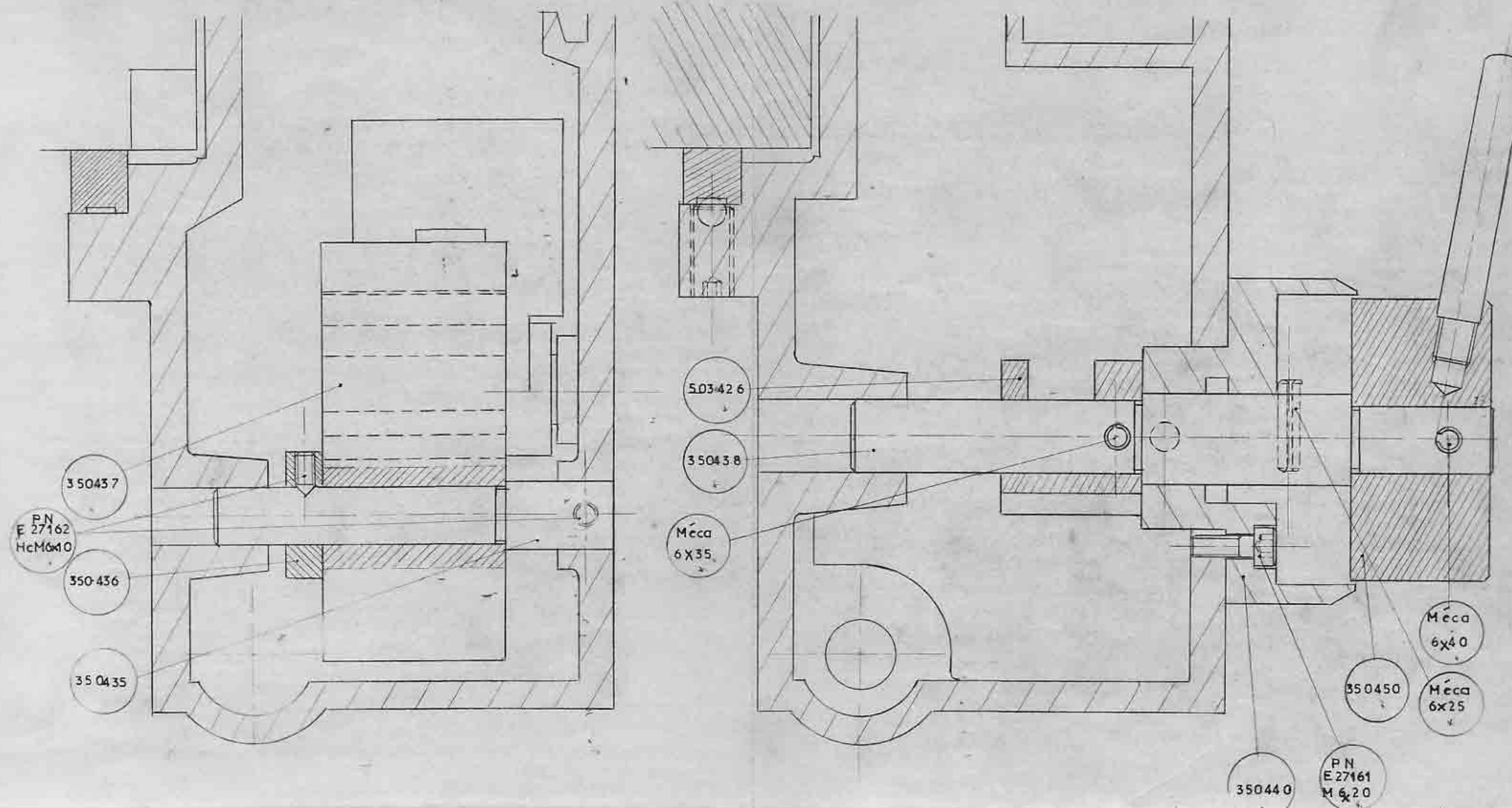
PN E 27162
Hc M 10.4

Ressort
7x22

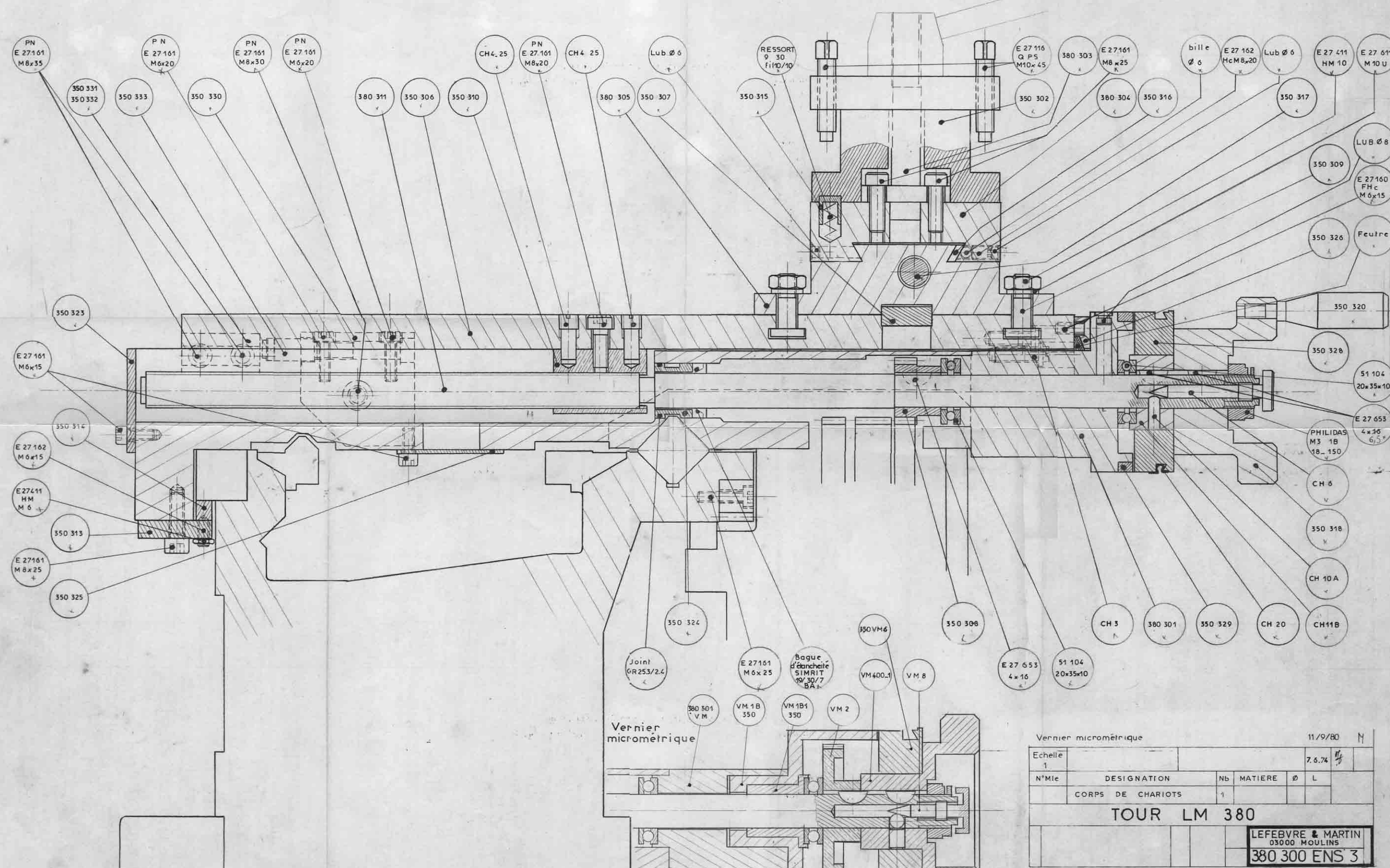
Bille
Ø 8

PN E 27160
Hc M 6x
15

| Echelle | Usinage | Traitement | 22.02 1980 | Op |
|---------------------------------|-------------|------------|---------------|----|
| 1 | | | | |
| N° Mte | Désignation | Nb Matière | Ø | L |
| | TABLIER | | | |
| TOURLM 350 C - 380 C | | | | |
| | | | | L |
| LEFEBVRE & MARTIN 03 MOULINS | | | | |
| 354400 ENS 1 | | | | |

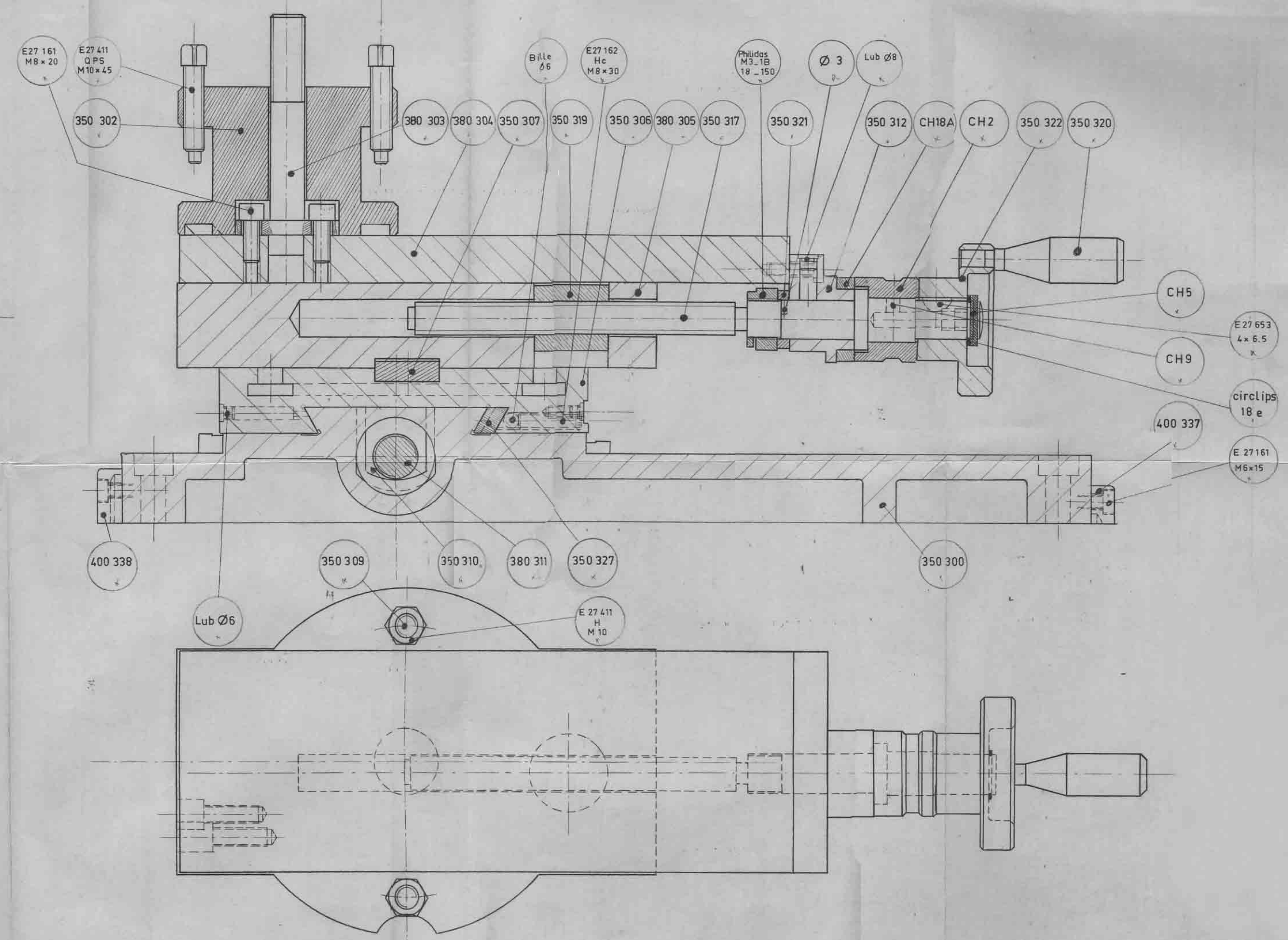
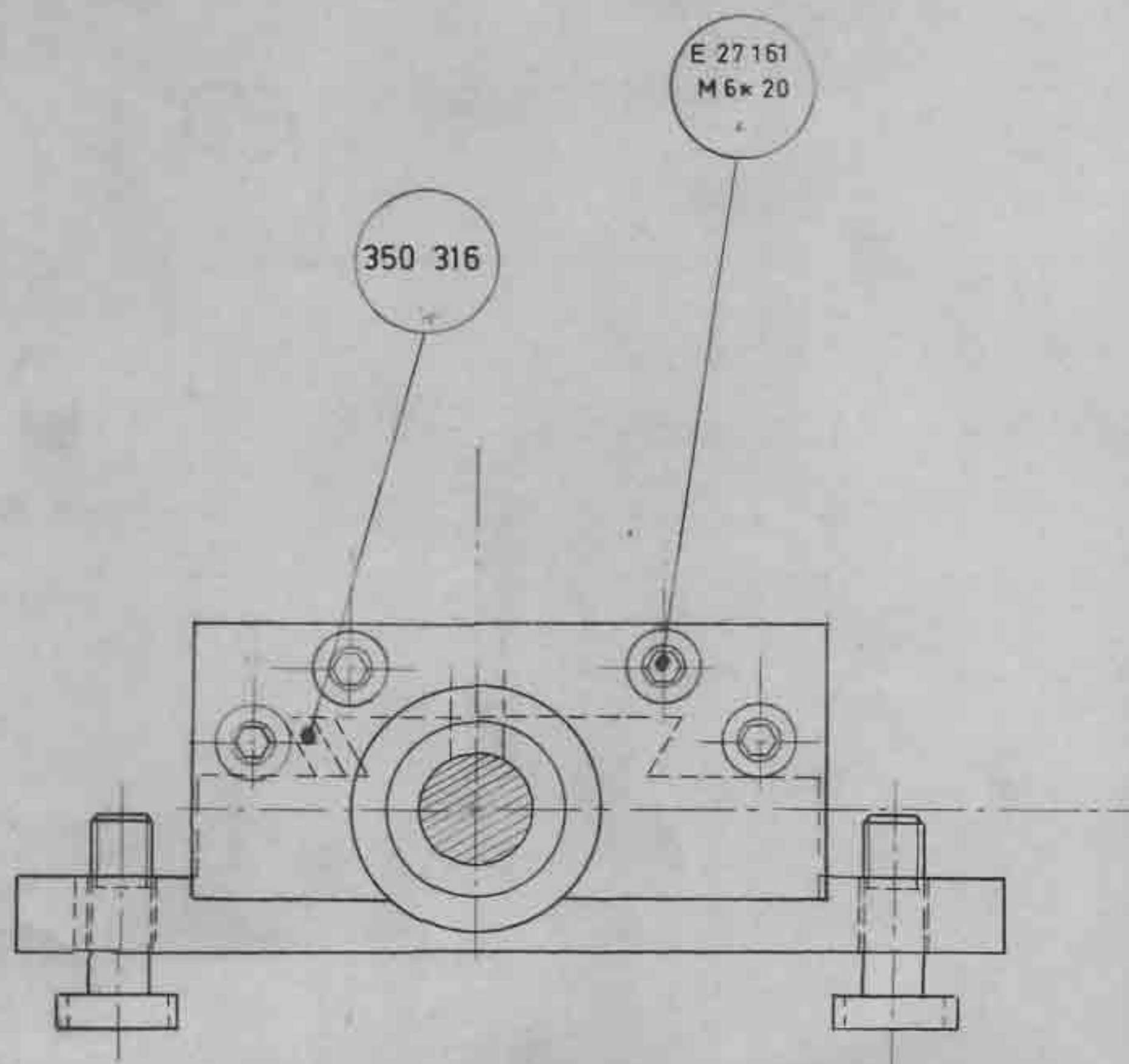


| Echelle | Usinage | Traitement | 26/02 1980 | |
|--|-------------|------------|------------|-----|
| N° Mle | Désignation | Nb | Matière | Ø L |
| | Tablier | | | |
| TOUR LM 350 C - 380 C | | | | |
| LEFÈVRE ET MARTIN 03 MOULINS 354400ENS 2 | | | | |

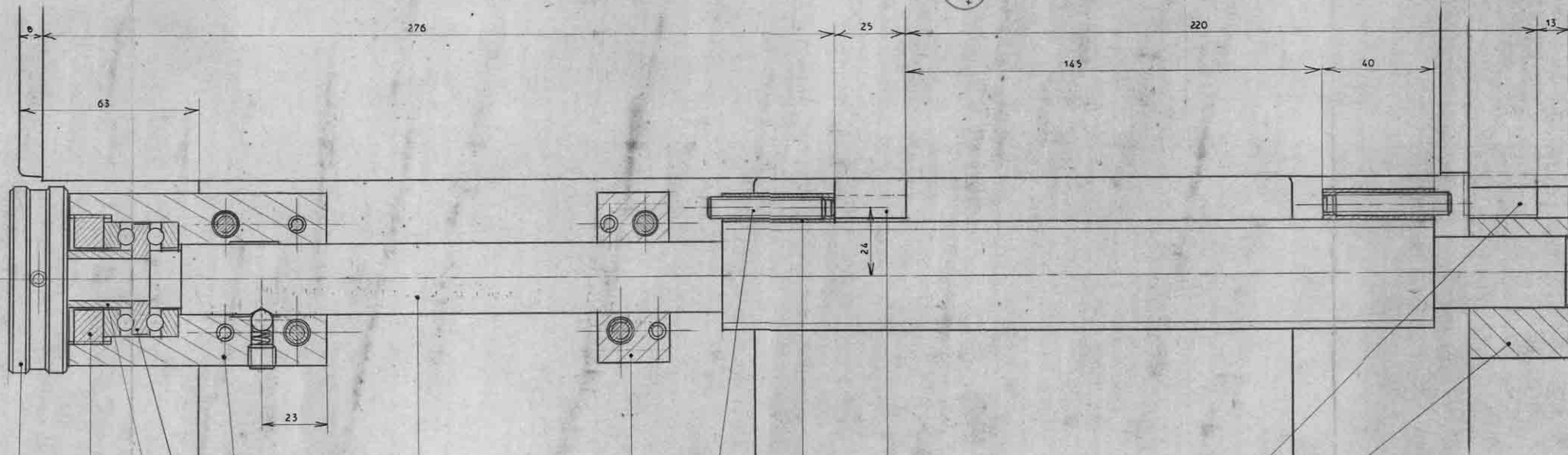
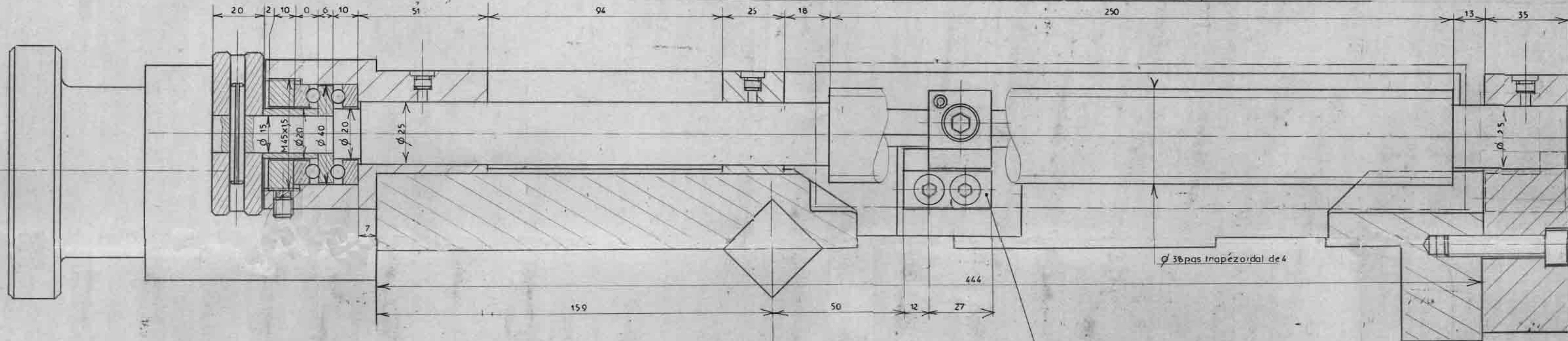
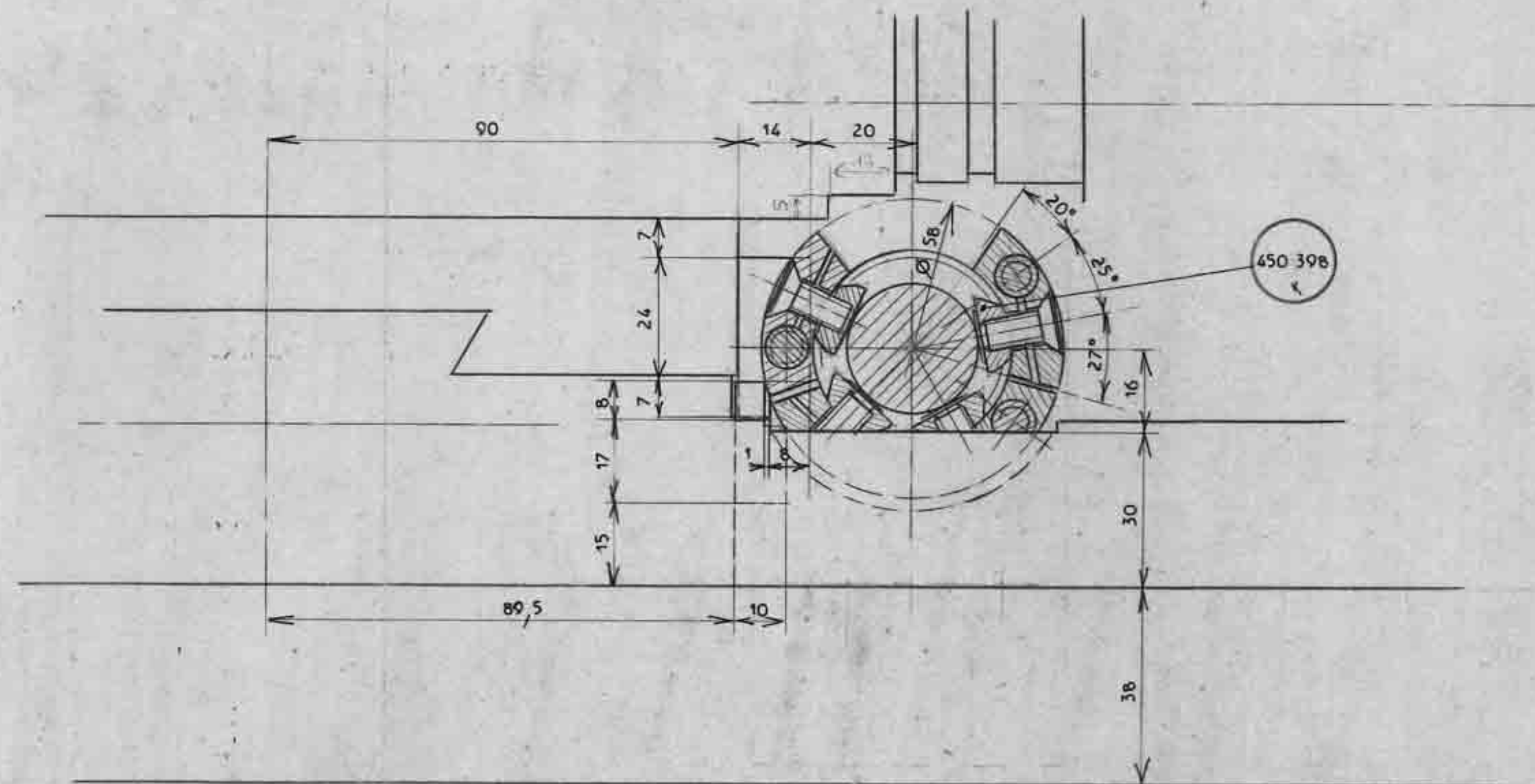


Vernier micrométrique 11/9/80 M

| | | | | | |
|---|-------------------|----|---------|---|--------|
| Echelle | | | | | 7.6.74 |
| N°Mie | DESIGNATION | Nb | MATIERE | Ø | L |
| | CORPS DE CHARIOTS | 1 | | | |
| TOUR LM 380 | | | | | |
| LEFEBVRE & MARTIN 03000 MOULINS 380 300 ENS 3 | | | | | |



| | | | | | |
|-------------------|------------------|----|---------|---------|---|
| ECH: 1 | USINAGE | | | 11/6/74 | |
| N°Mle | DESIGNATION | Nb | MATIERE | Ø | L |
| | CORPS DE CHAMOTS | 1 | | | |
| TOUR LM 380 | | | | | |
| LEFEBVRE & MARTIN | | | | | |
| 380 300 ENS 4 | | | | | |



380 381

380 384

380 383

380 382

52 204

380 377

380 380

Hc
Action court
M8x45

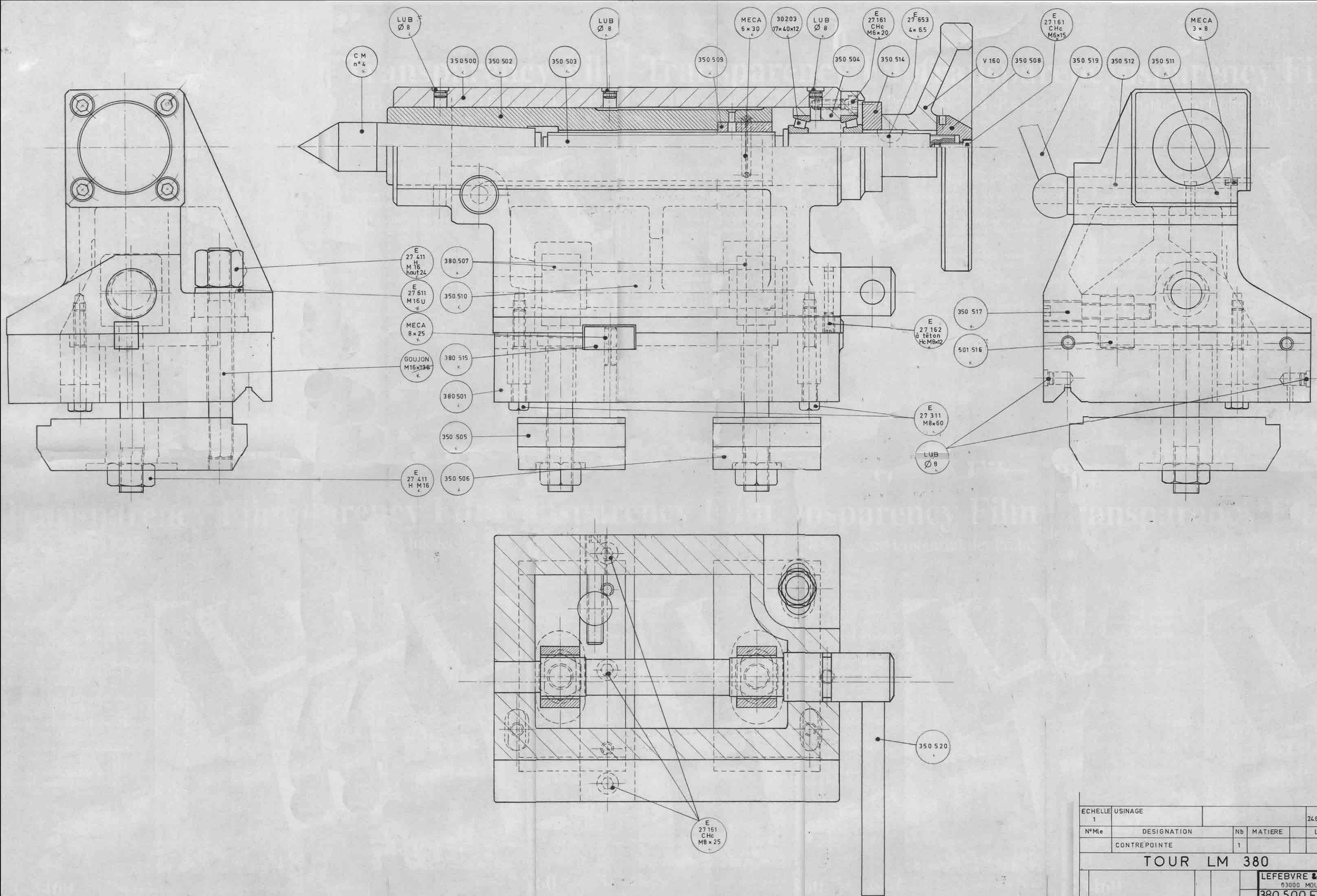
450 395

380 378

380 376

380 385

| | | | | |
|--------------------|--------------------------------|------------|-------------------------------|---|
| Echelle 1 | Usinage | Traitement | 3/10/70 | M |
| N°Mk | Désignation | Nb | Matériau | ∅ |
| | Bulées transversales sur barre | | | |
| TOUR LM 380 | | | | |
| | | | LEFEBVRE ET MARTIN MOULINS | |
| | | | 380 300ENS7 | |



| | | | | | |
|------------------------------|--------------|----|---------|--------|-----------|
| ECHELLE | USINAGE | | | 24.674 | <i>LM</i> |
| 1 | | | | | |
| N° Mle | DESIGNATION | Nb | MATIERE | L | |
| | CONTREPOINTE | 1 | | | |
| TOUR LM 380 | | | | | |
| LEFEBVRE & MARTIN | | | | | |
| 93000 MOULINS | | | | | |
| 380 500 ENS 2 | | | | | |