

S/N # DV-59-13769



PARTS LIST

FOR

HARDINGE SUPER-PRECISION HIGH SPEED LATHE

MODEL DV59

STARTING SERIAL #7000

HARDINGE BROTHERS, INC.

ELMIRA, NEW YORK

PL-12

HOW TO ORDER REPAIR PARTS

You Will Receive Quicker and Better Service When Ordering Repair
Parts If You Will Follow The Instructions Below.

These Four Requirements Are Essential:

1. State Amount Required.
2. Give Key Number, Part Number and Name of Part.
3. Give Complete Serial Number of Machine.
(This is Located On The Rear Of The Headstock Frame.) For Attachments, Advise Model Number.
4. Specify How And Where To Ship.

TABLE OF CONTENTS
DV59

Page No.

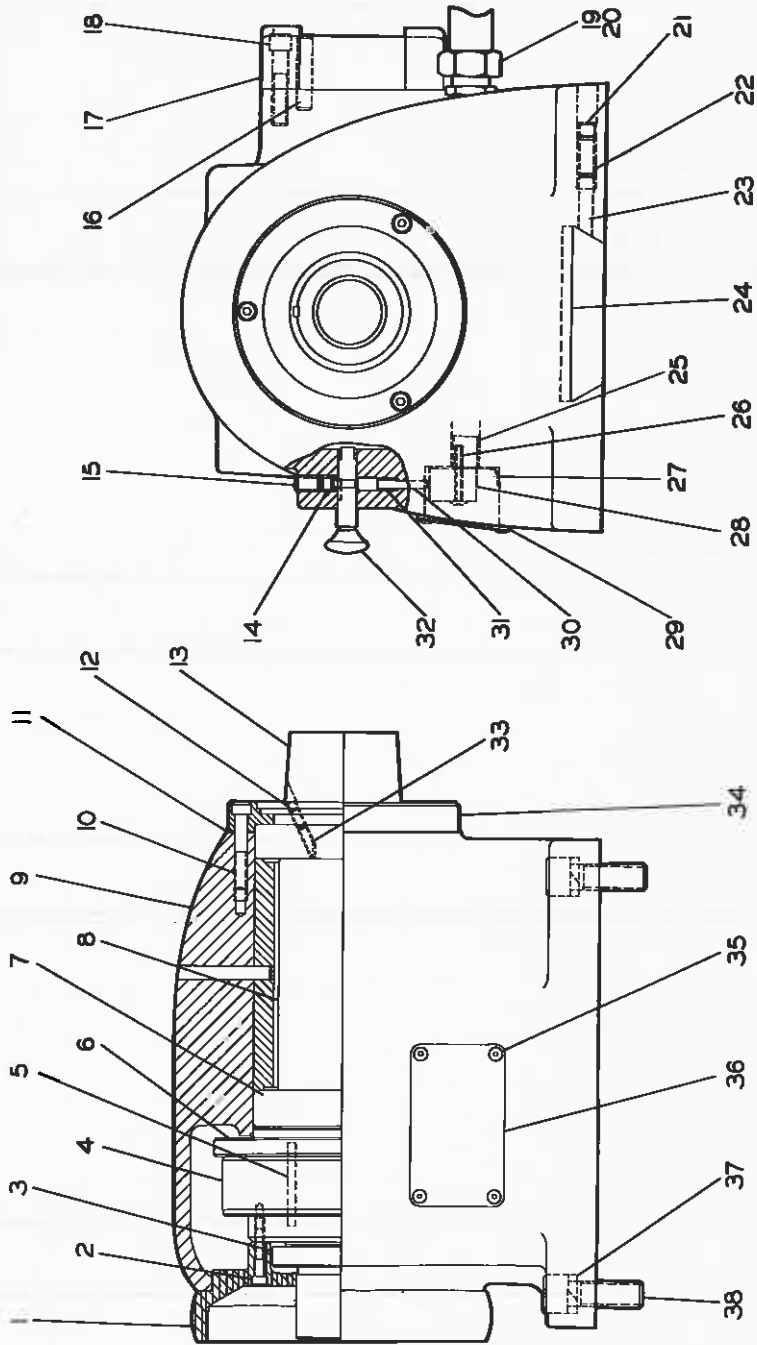
| | |
|--|-----|
| Bed Assembly | 11 |
| Brake Assembly | |
| Old Style | 15 |
| New Style | 15B |
| Collèt Closer | 7 |
| Compound Slide Rest | 25 |
| Coolant Facilities | 27 |
| Electric Control Panel | 17 |
| End Working Slide | 29 |
| Headstock Assembly | 5 |
| Pedestal Assembly | 13 |
| Radius Turning Attachment | 31 |
| Tailstock Assembly | 9 |
| Variable Speed Actuator Assembly | 23 |
| Variable Speed Control Box | 21 |
| Variable Speed Pulley Assembly | 19 |
| Vertical Cut-Off Attachment | 33 |

HEADSTOCK ASSEMBLY FOR DV59

| KEY | PART NUMBER | PCS. | PART NAME | KEY | PART NUMBER | PCS. | PART NAME | KEY | PART NUMBER | PCS. | PART NAME |
|-----|-------------|------|----------------|-----|-------------|------|--------------------|-----|-------------|------|------------------|
| 1 | VDB-316 | 1 | Handwheel | 13 | VD-282 | 1 | Spindle Assembly | 25 | LH-9938 | 1 | Insulator Sleeve |
| 2 | 100316 | 3 | Screw | 14 | R-6989 | 1 | Screw | 26 | 350114 | 2 | Screw |
| 3 | VD-4068 | 1 | Spindle Nut | 15 | LH-3558 | 1 | Lock Screw | 27 | LH-11063 | 1 | Insulator |
| 4 | 525-9625 | 1 | Head Belt | 16 | FB-6923 | 2 | Dowel | 28 | LH-10224 | 1 | Micro Switch |
| 5 | T10-8979 | 1 | Key | 17 | VD-479 | 1 | Collet Closer | 29 | LH-11033 | 1 | Seal |
| 6 | VD-4053 | 1 | Pulley | | | | Bracket | 30 | LH-1424 | 1 | Plunger |
| 7 | HLA-265 | 1pr | Bearing | 18 | 100824 | 3 | Screw | 31 | 79-8351 | 1 | Spring |
| 8 | S-4057 | 1 | Bearing Spring | 19 | 50-10225-90 | 1 | 1/2" Connector-90° | 32 | LH-279 | 1 | Lock Pin |
| 9 | VD-263 | 1 | Frame Assembly | 20 | 50-10229 | 1 | Conduit | 33 | 37A-284 | 1 | Key Screw |
| 10 | 100524 | 3 | Screw | 21 | 551005 | 1 | Lock Screw | 34 | VD-275 | 1 | Front Cap |
| 11 | VD-6424 | 1 | Gasket | 22 | 551012 | 1 | Screw | 35 | 300106 | 4 | Screw |
| 12 | 550306 | 1 | Lock Screw | 23 | DVA-8924 | 1 | Locking Plug | 36 | LH-256 | 1 | Name Plate |
| | | | | 24 | HC-9923 | 1 | Seal | 37 | HL-10053 | 4 | Lockwasher |
| | | | | | | | | 38 | 101324 | 4 | Screw |

WHEN ORDERING, GIVE KEY NUMBER, PART NUMBER, PART NAME AND COMPLETE SERIAL NUMBER WHICH IS LOCATED ON THE REAR OF THE HEADSTOCK FRAME

HEADSTOCK ASSEMBLY FOR DV59



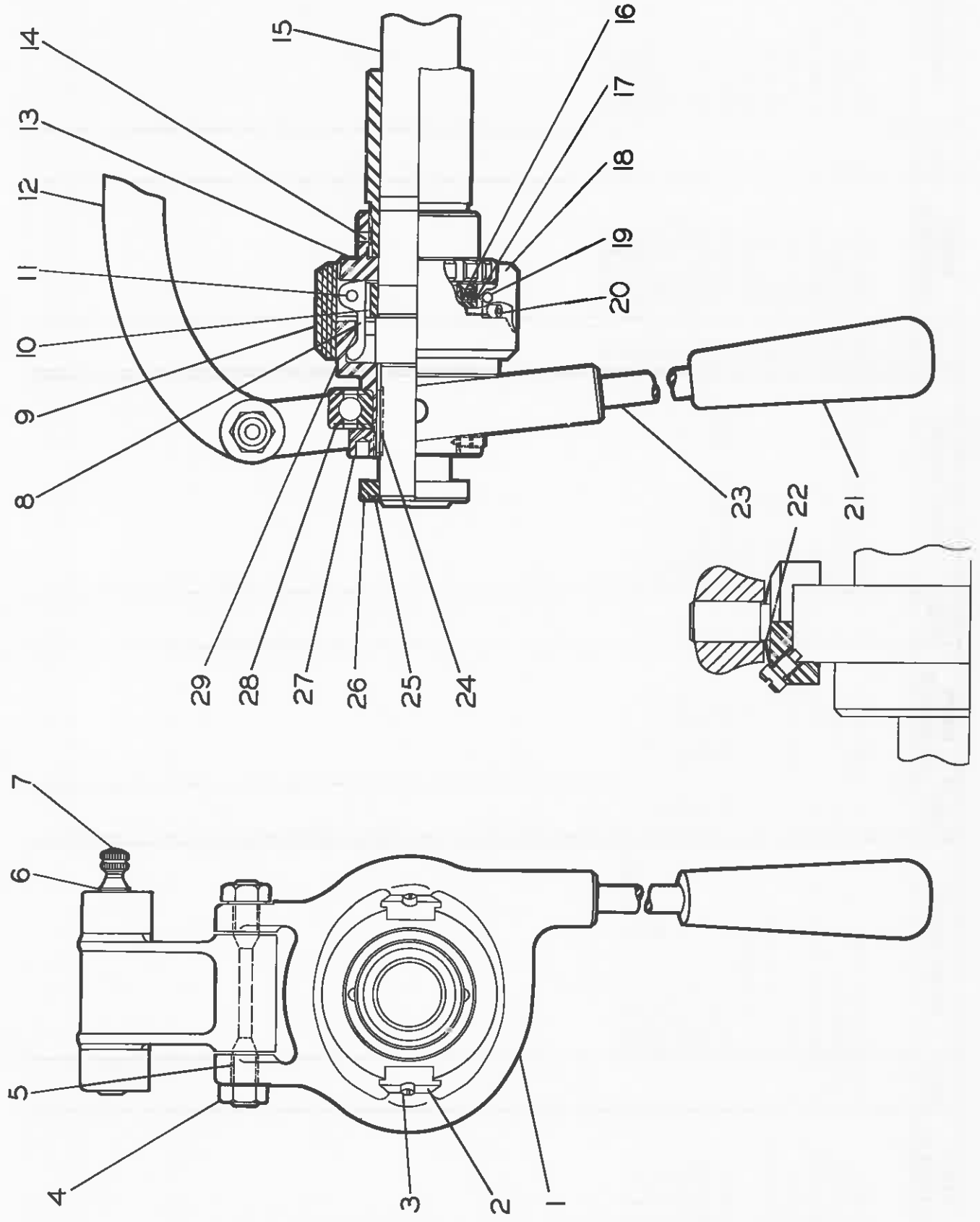
HARDINGE BROTHERS, INC., ELMIRA, NEW YORK, U.S.A.

COLLET CLOSER ASSEMBLY FOR DV59

| KEY | PART NUMBER | PCS. | PART NAME | KEY | PART NUMBER | PCS. | PART NAME | KEY | PART NUMBER | PCS. | PART NAME |
|-----|-------------|------|----------------|-----|-------------|------|------------------|-----|-------------|------|----------------|
| 1 | RE-501 | 1 | Lever Yoke | 10 | 57C-484 | 1 | Bracket | 19 | 37-488 | 1 | Pin |
| 2 | RA-8230 | 2 | Swivel Block | 11 | 5-2024 | 3 | Pin | 20 | 100308 | 4 | Screw |
| 3 | R-8232 | 2 | Screw | 12 | VD-503 | 1 | Connecting Link | 21 | 79A-8672 | 1 | Lever Handle |
| 4 | 5-1466 | 2 | Nut | 13 | DV-491 | 1 | Adjusting Nut | 22 | LH-10597 | 1 | Spring |
| 5 | 6-9034 | 2 | Pivot Screw | 14 | 6-493 | 1 | (With Key) | 23 | CWB-8168 | 1 | Handle |
| 6 | 50-8231-2 | 1 | Retaining Ring | 15 | 6B-480 | 1 | Key | 24 | TL-6117 | 1 | Key |
| 7 | VD-8019 | 1 | Link Pin | 16 | 37-490 | 1 | Spindle | 25 | 131-8231-8 | 1 | Retaining Ring |
| 8 | 37A-485 | 3 | Clutch Finger | 17 | 37-489 | 1 | Spring | 26 | 57A-481 | 1 | Stop Ring |
| 9 | RG-494 | 1 | Shell Guard | 18 | 37B-487 | 1 | Spring Cap | 27 | R-8222 | 1 | Nut |
| | | | | | | | Adjusting Finger | 28 | R-8233 | 1 | Bearing |
| | | | | | | | | 29 | 57A-496 | 1 | Clutch Cone |

WHEN ORDERING, GIVE KEY NUMBER, PART NUMBER, PART NAME AND COMPLETE SERIAL NUMBER WHICH IS LOCATED ON THE REAR OF THE HEADSTOCK FRAME

COLLET CLOSER ASSEMBLY FOR DV59



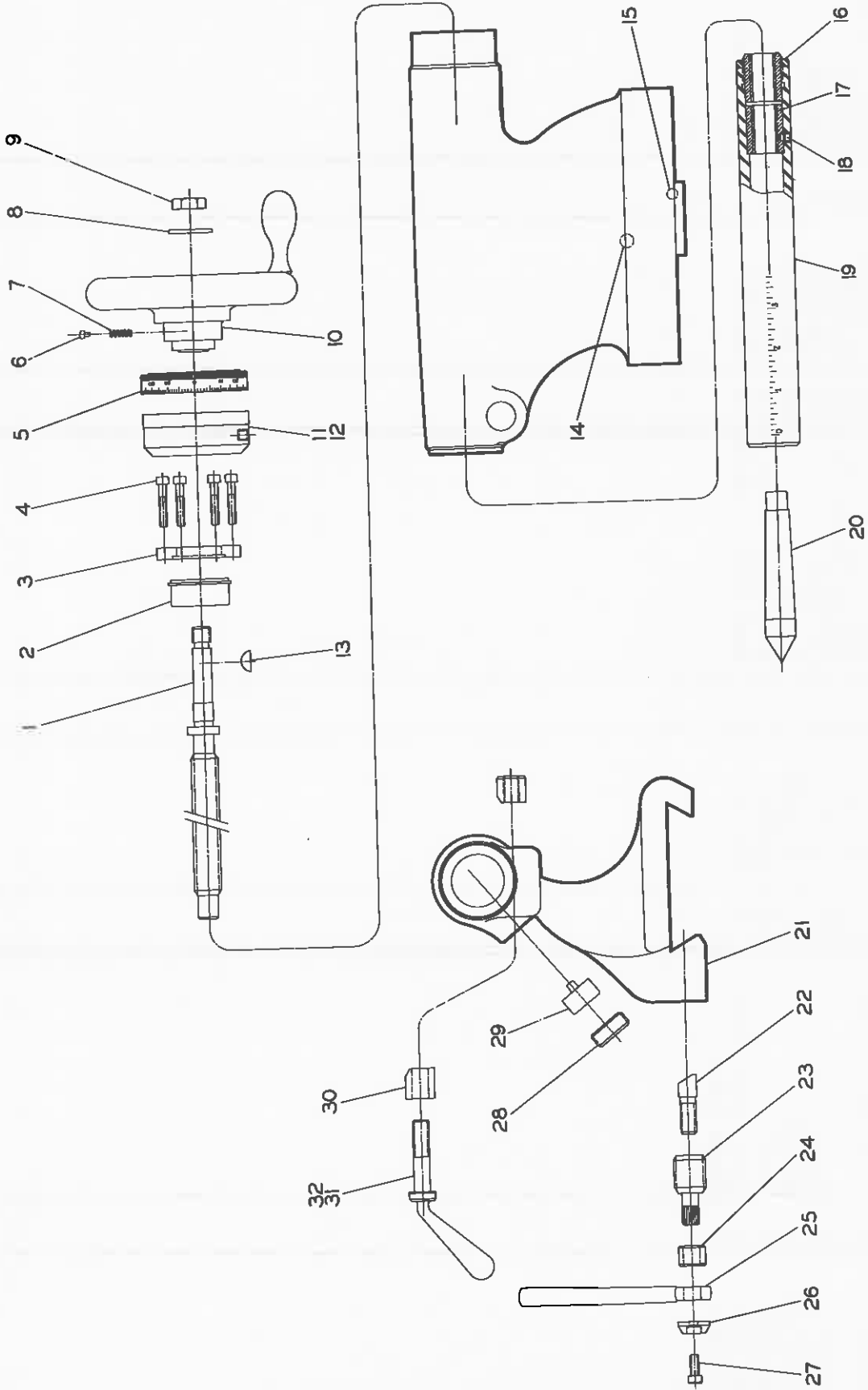
HARDINGE BROTHERS, INC., ELMIRA, NEW YORK, U.S.A.

TAILSTOCK FOR DV59

| KEY | PART NUMBER | PCS. | PART NAME | KEY | PART NUMBER | PCS. | PART NAME | KEY | PART NUMBER | PCS. | PART NAME |
|-----|-------------|------|-------------------------|-----|-------------|------|----------------|-----|-------------|------|-------------------|
| 1 | VD-403 | 1 | Feed Screw | 11 | VD-407 | 1 | Zero Ring | 21 | VDA-401 | 1 | Tailstock Body |
| 2 | VD-4140 | 1 | Bearing | 12 | 550504 | 1 | Screw | 22 | 6-9094 | 1 | Locking Plug |
| 3 | VD-11005 | 1 | Bearing Retainer | 13 | 3-1759 | 1 | Key | 23 | HL-8298 | 1 | Clamp Bolt |
| 4 | 100216 | 6 | Screw | 14 | CD-4638 | 1 | Stop Pin | 24 | HL-10028 | 1 | Spacer |
| 5 | HLB-10335-1 | 1 | Dial & Support Assembly | 15 | CD-4630 | 1 | Stop Pin | 25 | HL-418 | 1 | Handle |
| 6 | R-7859 | 1 | Plug | 16 | VD-1950 | 1 | Lock Pin | 26 | 6-9244 | 1 | Washer |
| 7 | HL-8759 | 1 | Spring | 17 | IEI-402 | 1 | Feed Screw Nut | 27 | 100308 | 1 | Screw |
| 8 | 5-2068 | 1 | Washer | 18 | 550504 | 1 | Screw | 28 | LH-11007 | 1 | Screw |
| 9 | VD-9052 | 1 | Handwheel Nut | 19 | VD-405 | 1 | Spindle | 29 | LH-11006 | 1 | Spindle Key |
| 10 | VD-410 | 1 | Handwheel & Handle | 20 | 2MA-422 | 1 | Center | 30 | VD-1554 | 1 | Binding Nut |
| | | | | | | | | 31 | R-1552 | 1 | Handle |
| | | | | | | | | 32 | TL-6815 | 1 | Binding Nut Shims |

WHEN ORDERING, GIVE KEY NUMBER, PART NUMBER, PART NAME AND COMPLETE SERIAL NUMBER WHICH IS LOCATED ON THE REAR OF THE HEADSTOCK FRAME

TAILSTOCK FOR DV59



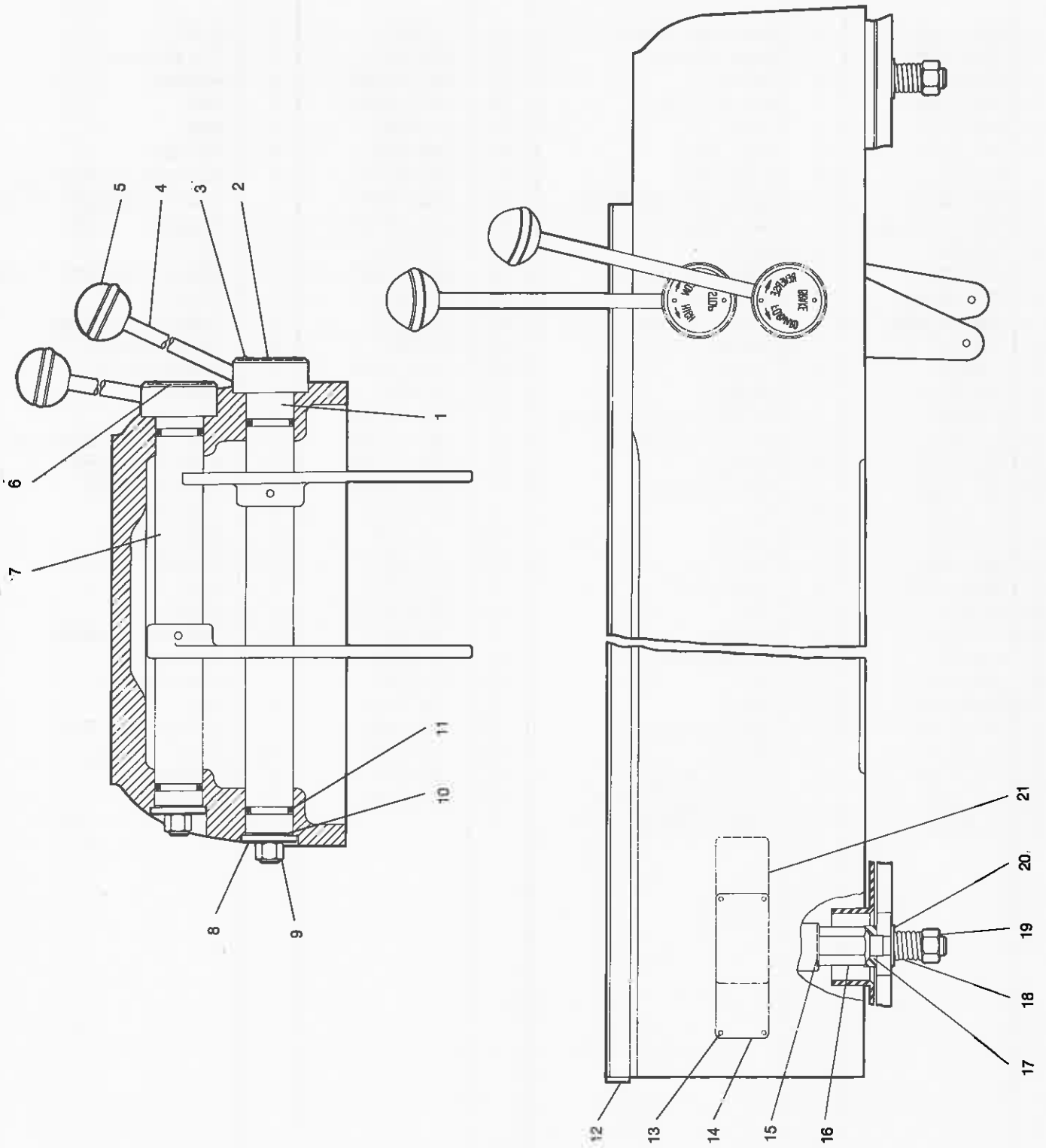
HARDINGE BROTHERS, INC., ELMIRA, NEW YORK, U.S.A.

BED ASSEMBLY FOR DV59

| KEY | PART NUMBER | PCS. | PART NAME | KEY | PART NUMBER | PCS. | PART NAME | KEY | PART NUMBER | PCS. | PART NAME |
|-----|-------------|------|-------------------------|-----|-------------|------|--------------------|-----|-------------|------|-------------------|
| 1 | VD-3720 | 1 | Reverse Lever | 8 | OL-7621 | 2 | Washer | 15 | 6-9896 | 3 | Washer |
| 2 | VD-1535 | 1 | Reverse - Forward Plate | 9 | SN-4626 | 2 | Nut | 16 | 56A-8265 | 3 | Hold Down Stud |
| 3 | R-8044 | 4 | Escutcheon Pin | 10 | DV-10597 | 2 | Spring Washer | 17 | 2-8266 | 3 | Washer |
| 4 | RAA-6239 | 2 | Handle | 11 | 19-9431 | 4 | "O" Ring | 18 | TA-6553 | 3 | Spring |
| 5 | MD-3285 | 2 | Knob | 12 | DV-10995 | 1 | Bumper | 19 | SN-4626 | 3 | Nut |
| 6 | VD-1669 | 1 | Low - High Plate | 13 | R-8044 | 8 | Escutcheon Pin | 20 | 5P-6433 | 6 | Washer |
| 7 | VD-3721 | 1 | Speed Lever | 14 | HL-256 | 1 | Name Plate - Front | 21 | FB-256 | 1 | Name Plate - Rear |

WHEN ORDERING, GIVE KEY NUMBER, PART NUMBER, PART NAME AND COMPLETE SERIAL NUMBER WHICH IS LOCATED ON THE REAR OF THE HEADSTOCK FRAME

BED ASSEMBLY FOR DV59



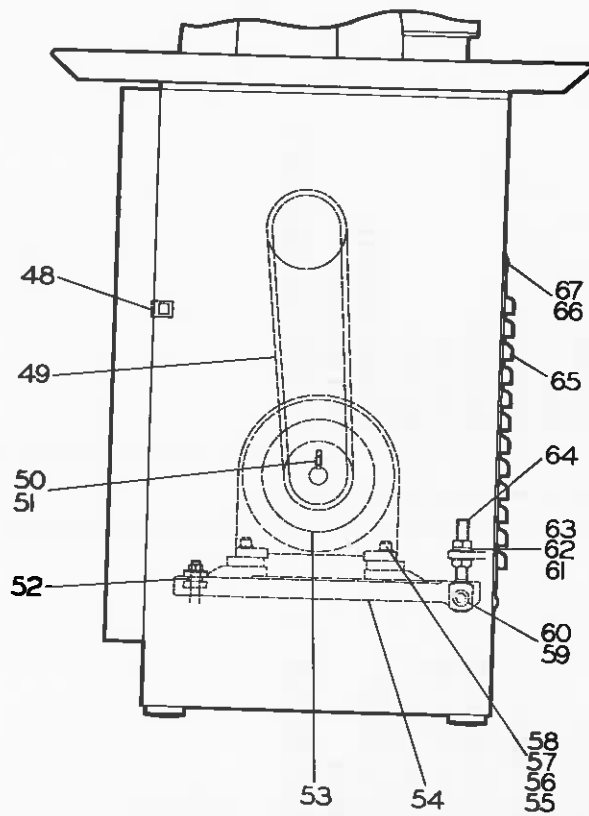
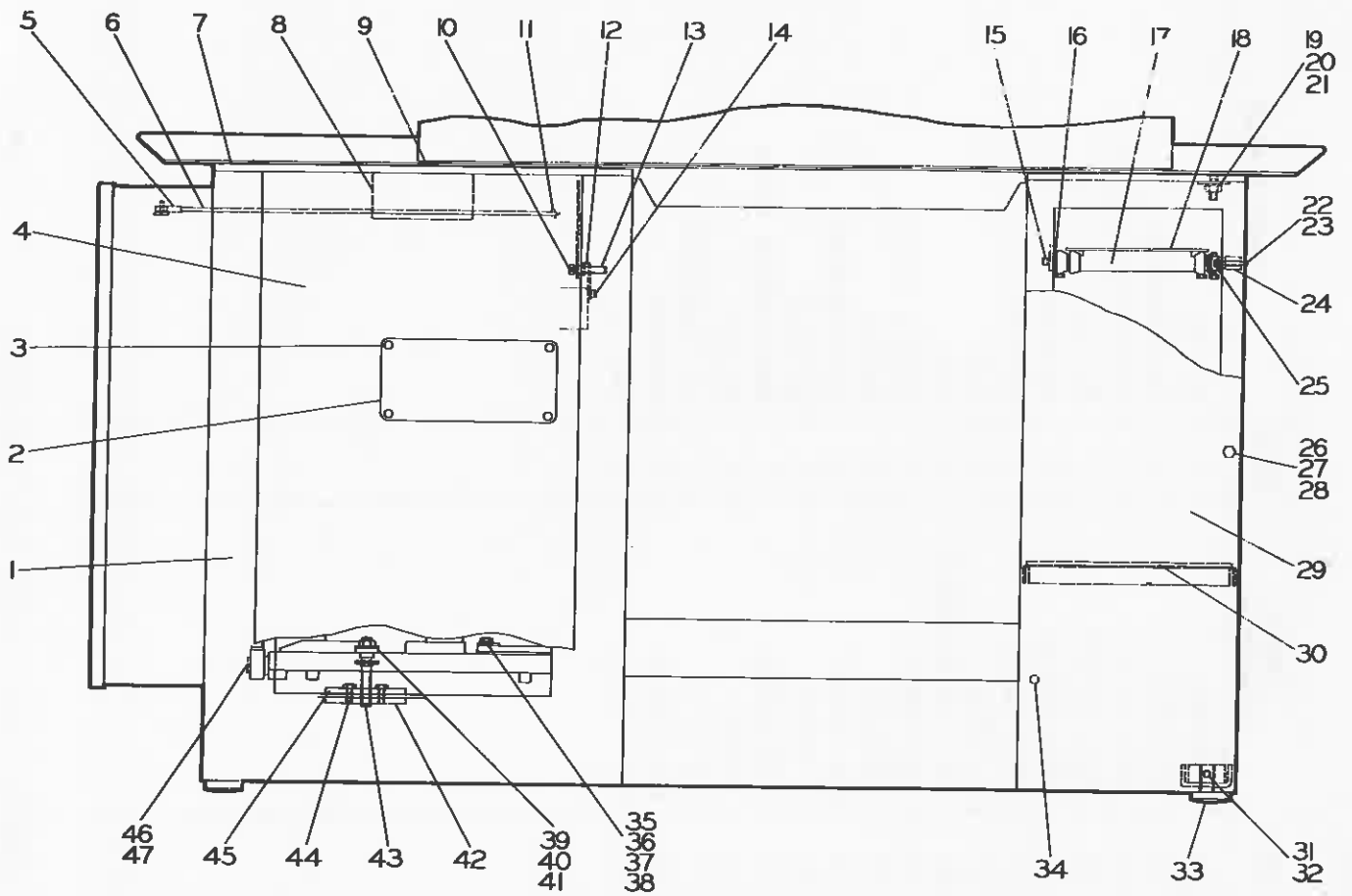
HARDINGE BROTHERS, INC., ELMIRA, NEW YORK, U.S.A.

PEDESTAL BASE FOR DV59

| KEY | PART NUMBER | PCS. | PART NAME | KEY | PART NUMBER | PCS. | PART NAME |
|-----|-------------|------|---------------------|-----|-------------|------|---------------------|
| 1 | VDA-1990 | 1 | Pedestal Base | 35 | 150824 | 2 | Bolt |
| 2 | FPB-4698 | 1 | Name Plate | 36 | MD-3227 | 2 | Lockwasher |
| 3 | 650104 | 6 | Screw | 37 | BK-10438 | 2 | Washer |
| 4 | VDA-3780 | 1 | Motor Door | 38 | DV-10680 | 2 | Nut |
| 5 | WE-2850 | 2 | Link | 39 | 5-1466 | 1 | Nut |
| 6 | VD-3288 | 2 | Pull Rod | 40 | CM-2885 | 3 | Washer |
| 7 | VD-4911 | 6 | Cork Pad | 41 | HL-9997 | 2 | Insulator Bushing |
| 8 | HPC-9858 | 1 | Instruction Plate | 42 | HIA-9999 | 1 | Lower Support Plate |
| 9 | VD-10565-1 | 1 | Bed Seal | 43 | AD-10000 | 1 | Support Screw |
| 10 | 550306 | 1 | Screw | 44 | 150716 | 2 | Screw |
| 11 | UE-4920 | 2 | Cotter Pin | 45 | HIA-9998 | 1 | Upper Support Plate |
| 12 | VD-10299 | 1 | Rod Support | 46 | HCB-9663 | 1 | Stud |
| 13 | DVB-10300 | 1 | Pivot Screw | 47 | VS-9672 | 1 | Rubber Bushing |
| 14 | 100508 | 1 | Screw | 48 | R-7980 | 2 | Door Catch |
| 15 | 100410 | 4 | Screw | 49 | VSG-9624 | 1 | Motor Belt |
| 16 | 5P-6431 | 6 | Washer | 50 | 550608 | 4 | Screw |
| 17 | 6-8780 | 2 | Collet Board Assem. | 51 | SS-10031 | 4 | Lockscrew |
| 18 | 6A-2172 | 2 | Collet Board | 52 | HL-10006 | 1 | Insulator Bushing |
| 19 | TL-4757 | 8 | Washer | 53 | DVB-3177 | 1 | Motor Pulley |
| 20 | MD-3591 | 8 | Lockwasher | 54 | DVC-1991 | 1 | Motor Plate |
| 21 | 7-1502 | 8 | Nut | 55 | WA-9191 | 4 | Washer |
| 22 | 300424 | 4 | Screw | 56 | 151048 | 4 | Motor Bolt |
| 23 | MD-2883 | 4 | Nut | 57 | MD-6826 | 4 | Washer |
| 24 | HIA-10073 | 4 | Spacer | 58 | TP-6836 | 4 | Nut |
| 25 | 6-8747 | 8 | Nut | 59 | HCB-9663 | 1 | Stud |
| 26 | 150610 | 10 | Screw | 60 | VS-9672 | 1 | Rubber Bushing |
| 27 | CM-2845 | 10 | Lockwasher | 61 | 3-3606 | 4 | Washer |
| 28 | 5P-2843 | 10 | Nut | 62 | U-3985 | 2 | Lockwasher |
| 29 | VD-8297 | 1 | Door | 63 | UA-4034 | 4 | Nut |
| 30 | VD-3788 | 2 | Tool Shelf | 64 | DV-1995 | 2 | Hinge Eye Bolt |
| 31 | 551012 | 1 | Screw | 65 | VD-3782 | 1 | Rear Cover |
| 32 | TL-6466 | 1 | Brass Plug | 66 | HL-505 | 4 | Washer |
| 33 | 6W-9454 | 1 | Adjustable Foot | 67 | 300608 | 4 | Screw |
| 34 | U-6916 | 5 | Rubber Plug | | | | |

WHEN ORDERING, GIVE KEY NUMBER, PART NUMBER, PART NAME AND COMPLETE SERIAL NUMBER WHICH IS LOCATED ON THE REAR OF THE HEADSTOCK FRAME

PEDESTAL BASE FOR DV59



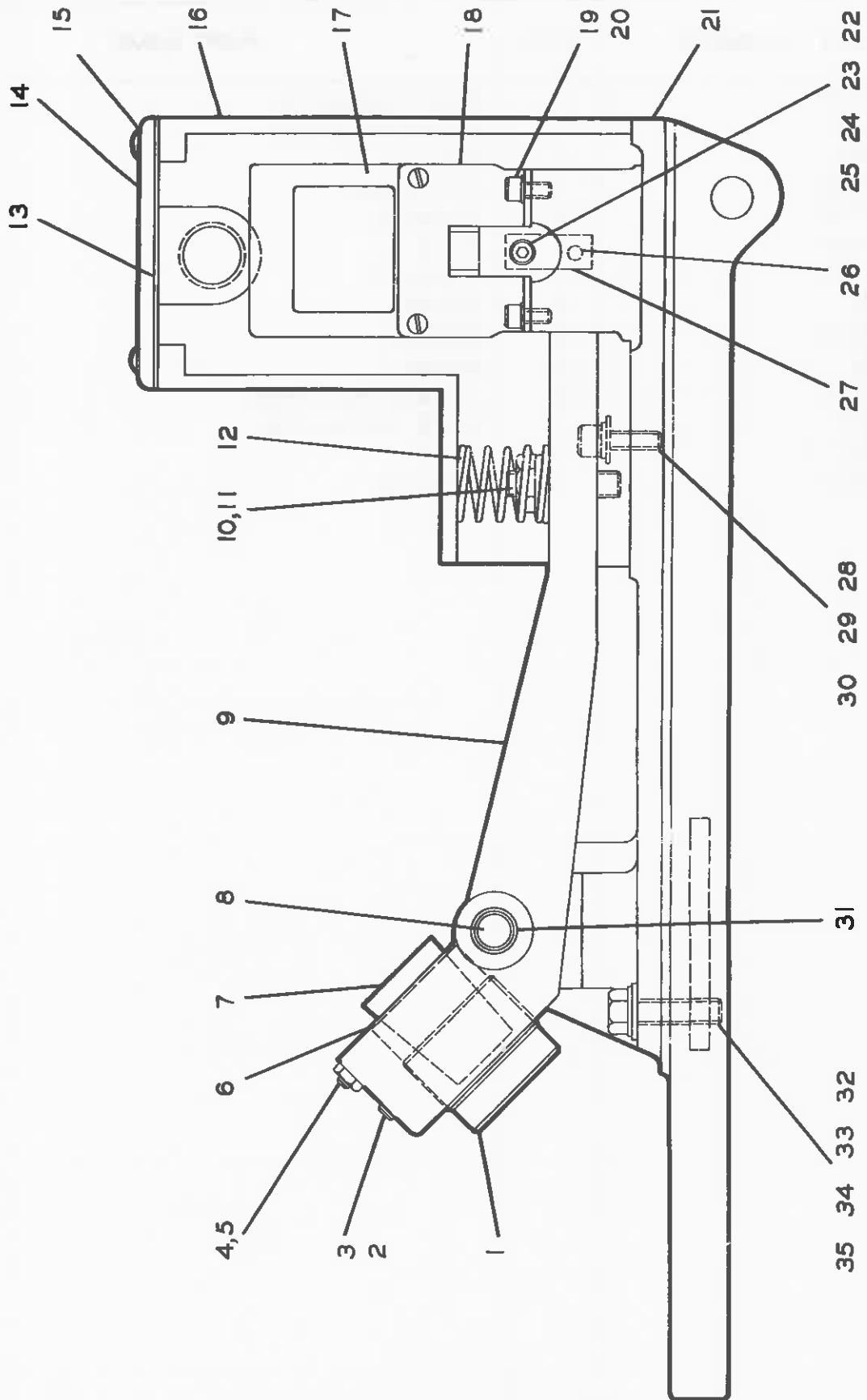
HARDINGE BROTHERS, INC., ELMIRA, NEW YORK, U.S.A.

DV59 BRAKE ASSEMBLY PARTS LIST
OLD STYLE

| KEY | PART NUMBER | PCS. | PART NAME | KEY | PART NUMBER | PCS. | PART NAME |
|-----|-------------|------|-------------------|-----|---------------|------|----------------|
| 1 | BKA-9656 | 1 | Bushing Support | 19 | 100308 | 4 | Screw |
| 2 | 550608 | 1 | Screw | 20 | CM-2840 | 4 | Lockwasher |
| 3 | N6W-9450 | 1 | Nylon Plug | 21 | DVA-9652 | 1 | Mounting Plate |
| 4 | HC-10259 | 1 | Key | 22 | BKA-10493 | 1 | Screw |
| 5 | BMD-2883 | 1 | Nut | 23 | GEA-10111 | 2 | Spacer |
| 6 | HC-10258 | 1 | Adjusting Bushing | 24 | BMD-3623 | 2 | Washer |
| 7 | FBC-4160 | 1 | Cork | 25 | U-3942 | 1 | Nut |
| 8 | DV-9655 | 1 | Pin | 26 | 187-1000-9862 | 1 | Pin |
| 9 | DVA-9653 | 1 | Brake Pin | 27 | SBA-9654 | 1 | Brake Link |
| 10 | 551024 | 1 | Screw | 28 | 100610 | 2 | Screw |
| 11 | 3-1425 | 1 | Nut | 29 | CM-2845 | 2 | Lockwasher |
| 12 | HC-8872 | 1 | Spring | 30 | 9-7910 | 2 | Washer |
| 13 | DVA-10116 | 1 | Gasket | 31 | X50-8231 | 2 | Retaining Ring |
| 14 | DVA-10115 | 1 | Cover | 32 | 150824 | 2 | Screw |
| 15 | 300410 | 2 | Screw | 33 | MD-3227 | 2 | Lockwasher |
| 16 | DVD-9820 | 1 | Brake Cover | 34 | BK-10438 | 2 | Washer |
| 17 | 8831 | 1 | Solenoid | 35 | DV-10680 | 2 | Nut |
| 18 | GEB-10218 | 2 | Solenoid Support | | | | |

WHEN ORDERING, GIVE KEY NUMBER, PART NUMBER, PART NAME AND COMPLETE SERIAL NUMBER WHICH IS LOCATED ON THE REAR OF THE HEADSTICK FRAME

BRAKE ASSEMBLY FOR DV59 - OLD STYLE



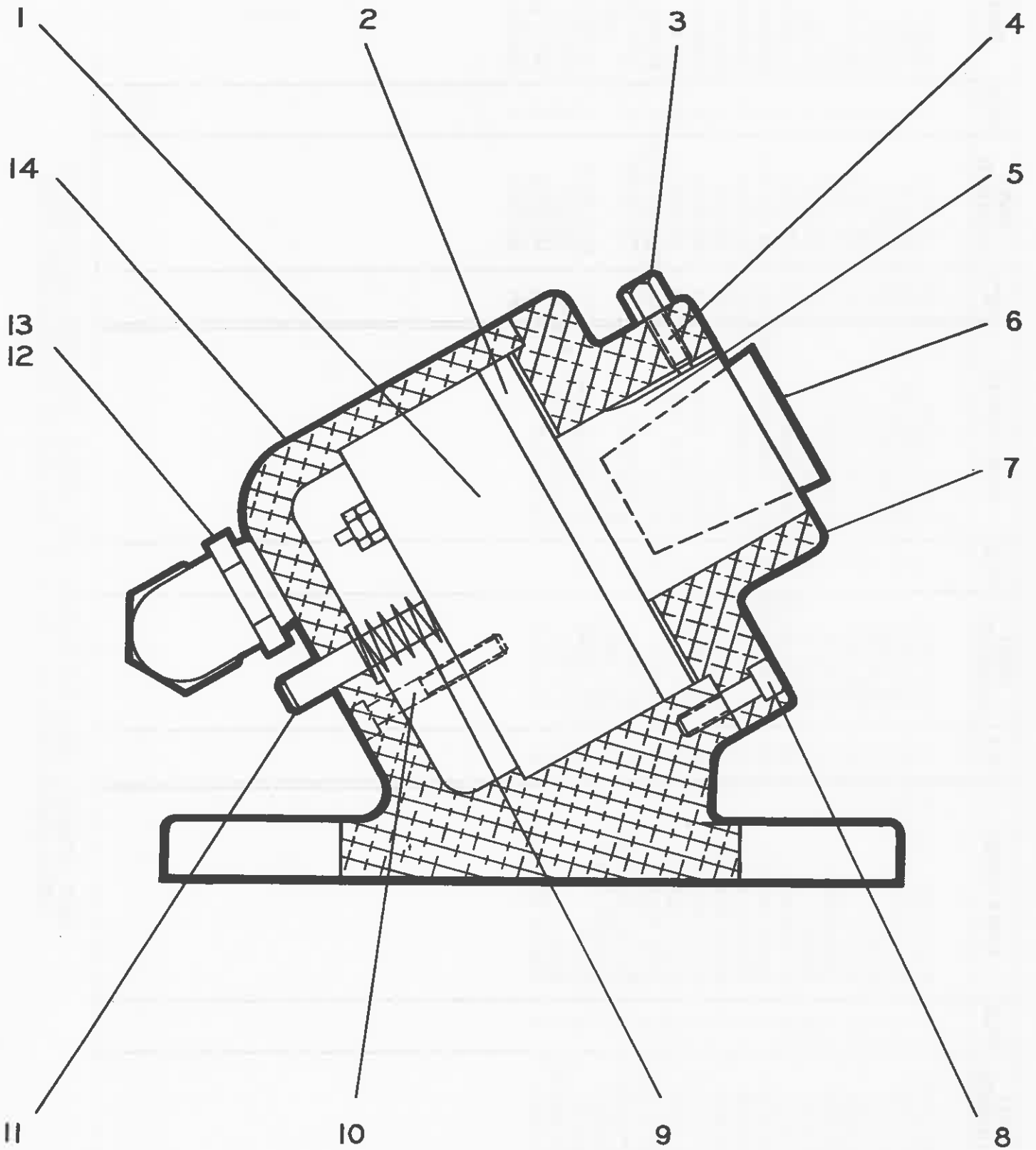
HARDINGE BROTHERS, INC., ELMIRA, NEW YORK, U.S.A.

DV59 BRAKE ASSEMBLY PARTS LIST
NEW STYLE

| KEY | PART NUMBER | PCS. | PART NAME |
|-----|-------------|------|-----------------|
| 1 | EB-11715 | 1 | Coil Assembly |
| 2 | EB-3248 | 1 | Armature Plate |
| 3 | 3B-1248 | 1 | Nut |
| 4 | HC-10259 | 1 | Key Screw |
| 5 | EB-10258 | 1 | Bushing |
| 6 | FBC-4160 | 1 | Cork |
| 7 | EB-11714 | 1 | Support |
| 8 | 100312 | 3 | Screw |
| 9 | EB-10311 | 1 | Spring |
| 10 | 100320 | 2 | Screw |
| 11 | EB-11167 | 1 | Adjusting Screw |
| 12 | AD-9207 | 1 | Cord Connector |
| 13 | 16-3011-2 | 48" | Cord |
| 14 | EB-11713 | 1 | Housing |

WHEN ORDERING, GIVE KEY NUMBER, PART NUMBER, NUMBER OF PIECES, PART NAME
AND COMPLETE SERIAL NUMBER OF MACHINE

BRAKE ASSEMBLY FOR DV59 - NEW STYLE



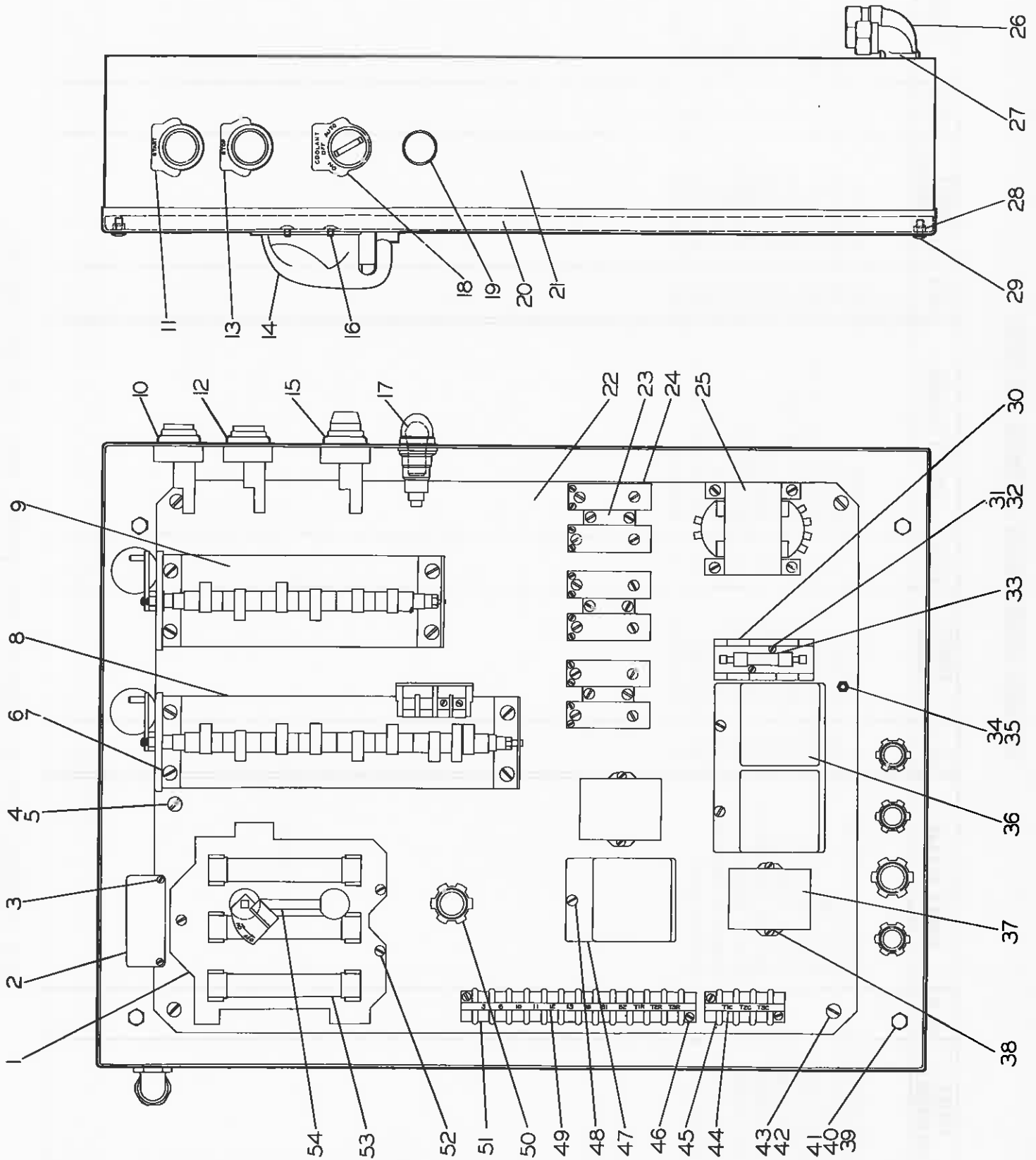
HARDINGE BROTHERS, INC., ELMIRA, NEW YORK, U.S.A.

ELECTRIC CONTROL PANEL FOR DV59

| KEY | PART NUMBER | PCS. | PART NAME | KEY | PART NUMBER | PCS. | PART NAME | KEY | PART NUMBER | PCS. | PART NAME | KEY | PART NUMBER | PCS. | PART NAME |
|-----|-------------|------|-------------------|-----|-------------|------|----------------------|-----|-------------|------|--------------------|-----|-------------|------|-----------|
| 1 | JG-10016 | 1 | Disconnect Switch | 19 | DQR-9971 | 1 | Pilot Light | 37 | IH-8775 | 2 | Magnetic Contactor | | | | |
| 2 | DV-10302 | 1 | Instruction Plate | 20 | CQA-9976 | 1 | Rubber Gasket | 38 | 350318 | 4 | Screw | | | | |
| 3 | 350104 | 2 | Screw | 21 | VD-4158 | 1 | Switch Case | 39 | 150610 | 4 | Screw | | | | |
| 4 | 350608 | 1 | Screw | 22 | VDA-1904 | 1 | Switch Plate | 40 | CM-2845 | 4 | Lockwasher | | | | |
| 5 | CM-2845 | 1 | Lockwasher | 23 | IH-9864 | 3 | Relay Support | 41 | 5P-2843 | 4 | Nut | | | | |
| 6 | 350508 | 8 | Screw | 24 | HVA-8122 | 6 | Relay | 42 | 350608 | 4 | Screw | | | | |
| 7 | 6-9181 | 8 | Lockwasher | 25 | V-565-8776 | 1 | Transformer | 43 | CM-2845 | 4 | Lockwasher | | | | |
| 8 | DV-2835 | 1 | Speed Switch | 26 | 75-10225-90 | 1 | 3/4" Connector - 90° | 44 | DV-9175-3 | 1 | Marker Strip | | | | |
| 9 | GC-2834 | 1 | Reverse Switch | 27 | 50-10225-90 | 4 | 1/2" Connector - 90° | 45 | H3-8116 | 1 | Terminal Strip | | | | |
| 10 | IH-9973 | 1 | Start Button | 28 | GD-10755 | 2 | Spacer | 46 | 360310 | 4 | Screw | | | | |
| 11 | J6-10345 | 1 | Start Button | 29 | GD-10465 | 2 | Captive Screw | 47 | RG-8775 | 1 | Contactor | | | | |
| 12 | J6-9972 | 1 | Start Button | 30 | DV-10017 | 1 | Fuse Cut Out | 48 | 360307 | 19 | Screw | | | | |
| 13 | IH-10345 | 1 | Stop Plate | 31 | 350206 | 2 | Screw | 49 | VDA-9175-12 | 1 | Marker Strip | | | | |
| 14 | JG-10359 | 1 | Handle Assembly | 32 | HC-2840 | 2 | Lockwasher | 50 | 75-10225 | 1 | 3/4" Connector | | | | |
| 15 | VD-9553 | 1 | Coolant Switch | 33 | JHL-9610 | 1 | Fuse | | | | Straight | | | | |
| 16 | 350304 | 3 | Screw | 34 | DV-10545 | 1 | Grounding Post | 51 | HI2-8116 | 1 | Terminal Strip | | | | |
| 17 | DQR-10557 | 1 | Lamp | 35 | D-10546 | 1 | Grounding Post Nut | 52 | 360307 | 3 | Screw | | | | |
| 18 | 24-9520 | 1 | Legend Plate | 36 | DV-10230 | 1 | Contactor | 53 | IH-9610 | 3 | Main Line Fuse | | | | |
| | | | | | | | | 54 | IH-7220 | 1 | Handle Assembly | | | | |

WHEN ORDERING, GIVE KEY NUMBER, PART NUMBER, PART NAME AND COMPLETE SERIAL NUMBER WHICH IS LOCATED ON THE REAR OF THE HEADSTOCK FRAME

ELECTRIC CONTROL PANEL FOR DV59



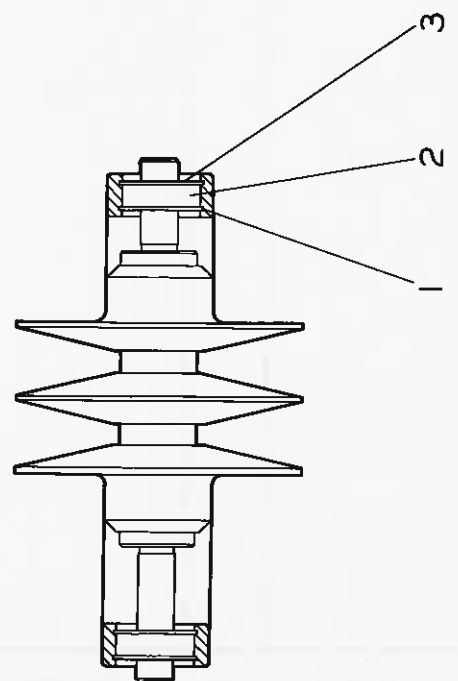
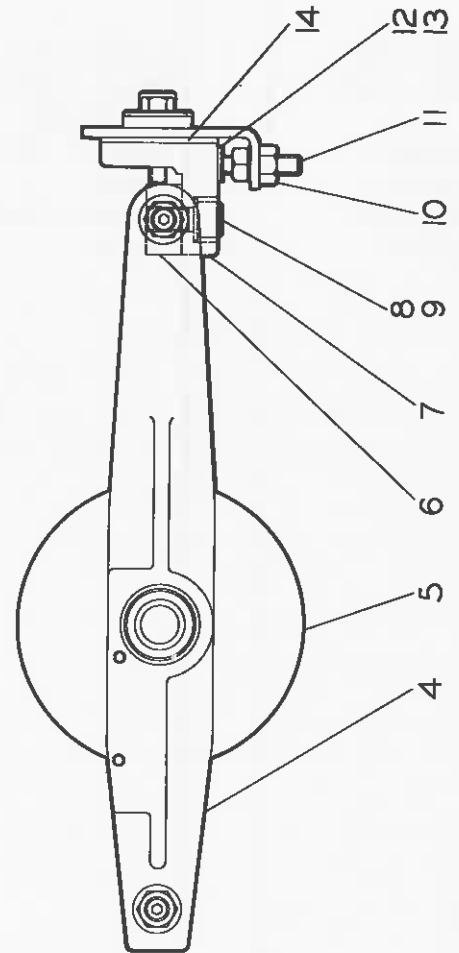
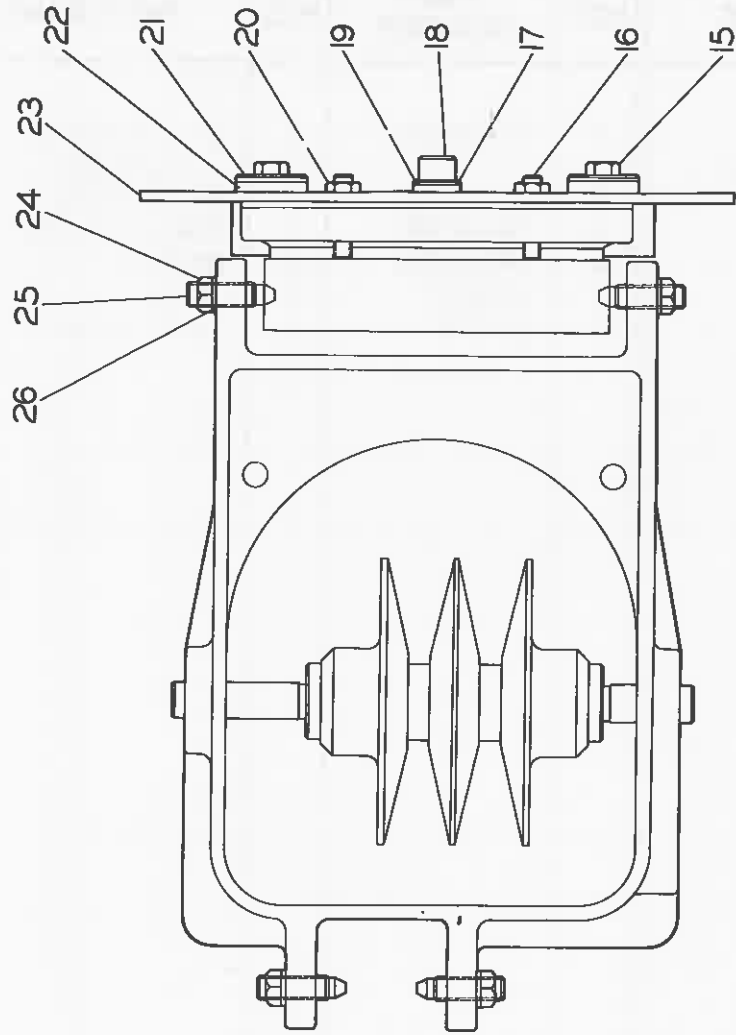
HARDINGE BROTHERS, INC., ELMIRA, NEW YORK, U.S.A.

VARIABLE SPEED PULLEY ASSEMBLY FOR DV59

| KEY | PART NUMBER | PCS. | PART NAME | KEY | PART NUMBER | PCS. | PART NAME | KEY | PART NUMBER | PCS. | PART NAME |
|-----|-------------|------|-----------------|-----|-------------|------|-----------------|-----|-------------|------|----------------|
| 1 | 165-8231-1 | 4 | Retaining Ring | 9 | 101316 | 1 | Screw | 18 | 101320 | 1 | Screw |
| 2 | CW-9058 | 2 | Bearing | 10 | 7-1502 | 4 | Nut | 19 | 5P-6433 | 1 | Washer |
| 3 | 510-10405 | 1 | Bearing Shim | 11 | 551024 | 4 | Adjusting Screw | 20 | 7-1502 | 2 | Nut |
| 4 | CHA-10180 | 1 | Drive Support | 12 | DV-10541 | 2 | Rubber Bumper | 21 | QS-10143 | 2 | Washer |
| 5 | DVC-9832 | 1 | Pulley Assembly | 13 | DV-10567 | 2 | Bushing | 22 | DV-10542 | 2 | Rubber Washer |
| 6 | QS-10140 | 1 | Pivot Block | 14 | DV-10537 | 1 | Insulator | 23 | LH-1990-47 | 1 | Hanger Bracket |
| 7 | QSA-10121 | 1 | Support Bracket | 15 | 151020 | 2 | Screw | 24 | 5-1466 | 4 | Nut |
| 8 | 5P-6434 | 5 | Lockwasher | 16 | 551024 | 2 | Adjusting Screw | 25 | QS-10141 | 4 | Pivot Screw |
| | | | | 17 | DV-10536 | 1 | Bushing | 26 | 5P-6434 | 5 | Lockwasher |

WHEN ORDERING, GIVE KEY NUMBER, PART NUMBER, PART NAME AND COMPLETE SERIAL NUMBER WHICH IS LOCATED ON THE REAR OF THE HEADSTOCK FRAME

VARIABLE SPEED PULLEY ASSEMBLY FOR DV59



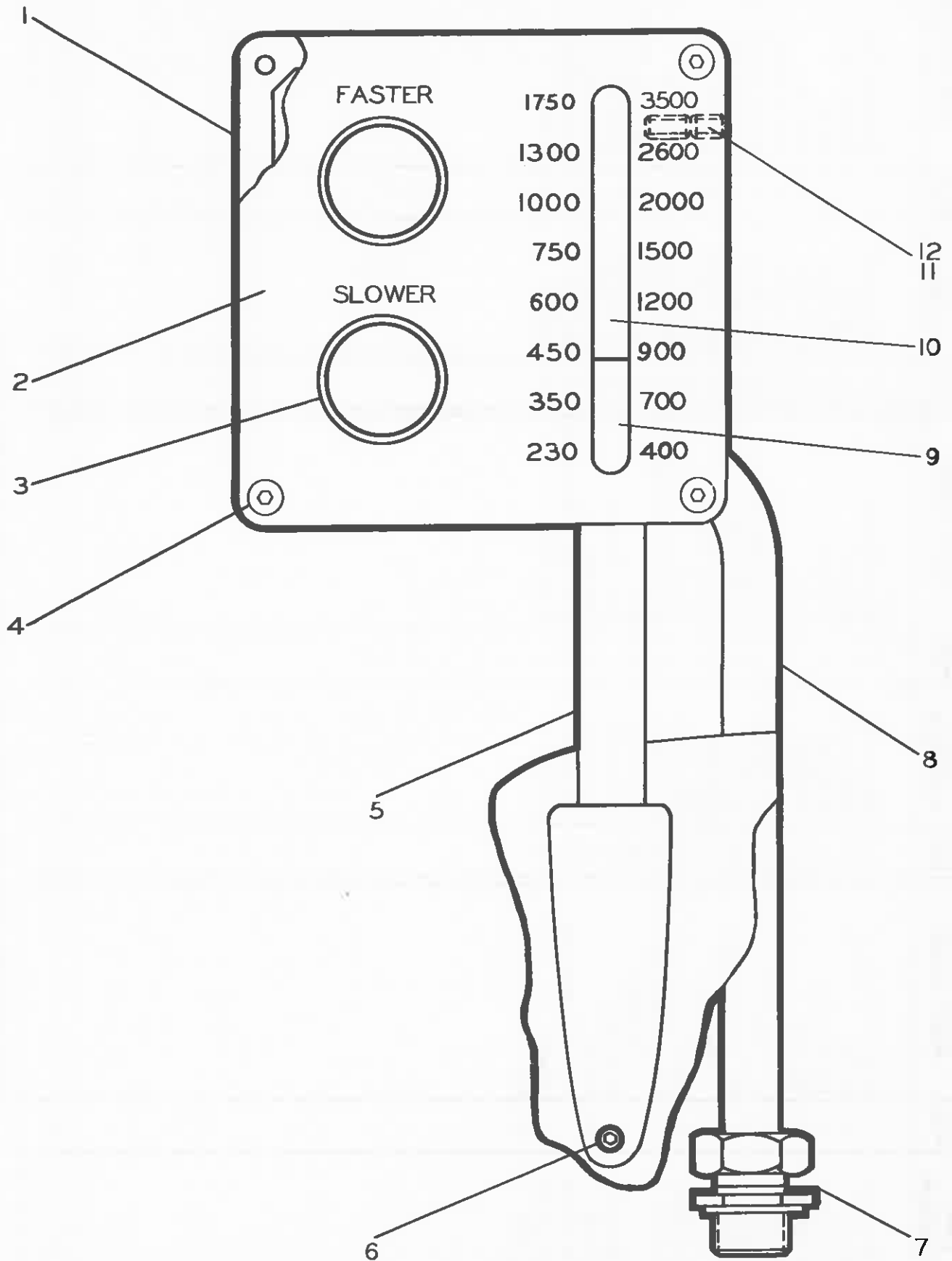
HARDINGE BROTHERS, INC., ELMIRA, NEW YORK, U.S.A.

VARIABLE SPEED CONTROL BOX FOR DV59

| KEY | PART NUMBER | PCS. | PART NAME | KEY | PART NUMBER | PCS. | PART NAME |
|-----|-------------|------|--------------------------|-----|-------------|------|--------------------------|
| 1 | DVA-10181 | 1 | Control Box | 7 | 50-10225 | 2 | 1/2" Connector |
| 2 | DVA-10188 | 1 | Speed Indicator Plate | 8 | 50-10229 | 1 | Straight 1/2" Conduit |
| 3 | DV-9973 | 2 | Control Unit | 9 | DV-10185 | 1 | Indicator Rod |
| 4 | 300306 | 4 | Screw | 10 | DV-10189 | 1 | Window |
| 5 | VD-10190 | 1 | Support Post | 11 | 550608 | 2 | Screw |
| 6 | 550504 | 2 | Screw | 12 | 550606 | 2 | Lock Screw |

WHEN ORDERING, GIVE KEY NUMBER, PART NUMBER, PART NAME AND COMPLETE SERIAL NUMBER WHICH IS LOCATED ON THE REAR OF THE HEADSTOCK FRAME

VARIABLE SPEED CONTROL BOX FOR DV59



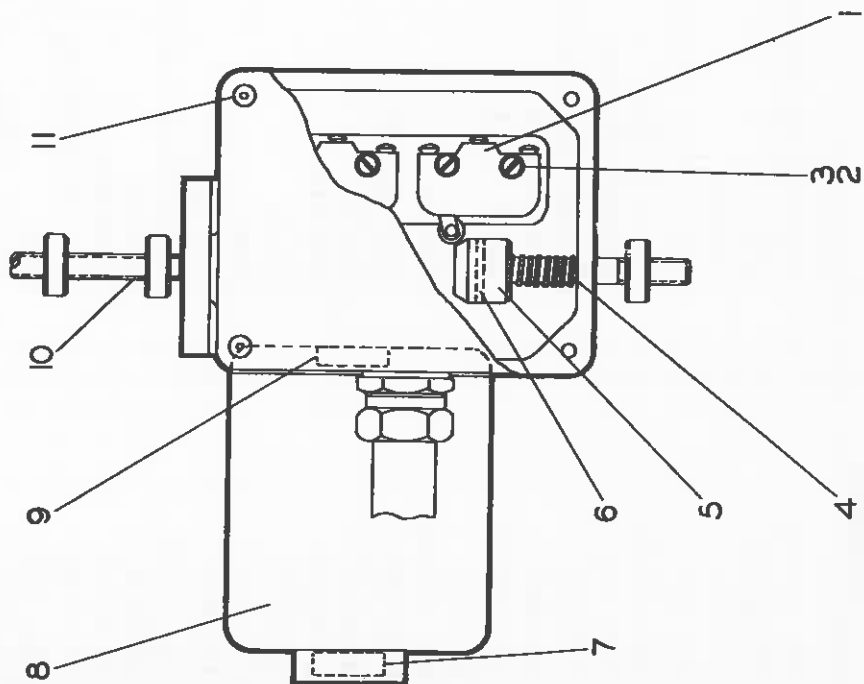
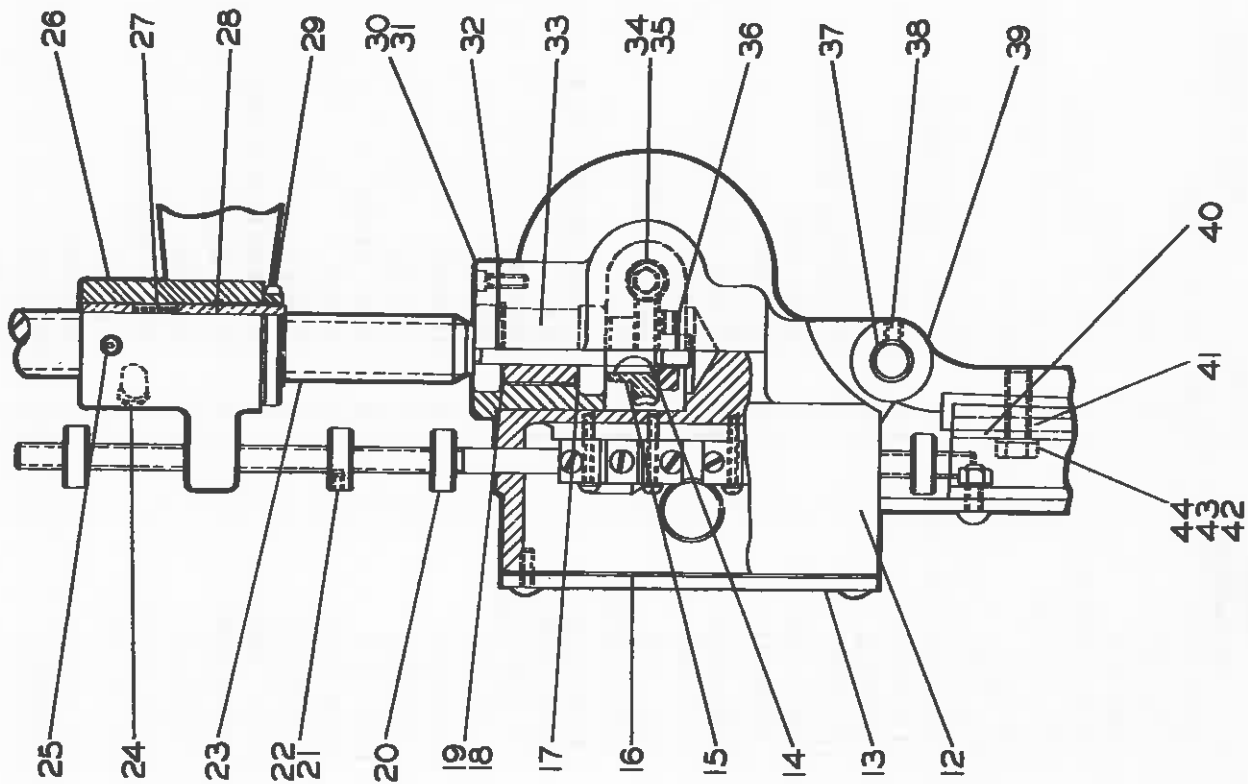
HARDINGE BROTHERS, INC., ELMIRA, NEW YORK, U.S.A.

VARIABLE SPEED ACTUATOR ASSEMBLY FOR DV59

| KEY | PART NUMBER | PCS. | PART NAME | KEY | PART NUMBER | PCS. | PART NAME | KEY | PART NUMBER | PCS. | PART NAME |
|-----|-------------|------|-----------------|-----|-------------|------|--------------------|-----|-------------|------|-----------------|
| 1 | DVB-10224 | 2 | Micro Switch | 15 | DVA-10183 | 1 | Worm Wheel | 30 | DVB-10187 | 1 | Bearing Cap |
| 2 | 350116 | 4 | Screw | 16 | DVA-10216 | 1 | Gasket | 31 | 100308 | 3 | Screw |
| 3 | SI-8137 | 4 | Lockwasher | 17 | TL-6618 | 2 | Bearing | 32 | VSC-6481 | | Shim |
| 4 | DV-10418 | 2 | Spring | 18 | TL-6480 | | Shim | 33 | VSC-1799 | 1 | Spacer |
| 5 | DV-10420 | 2 | Switch Trip | 19 | TL-6481 | | Shim | 34 | DV-10231 | 1 | Motor Worm |
| 6 | 4S-9862-16 | 2 | Roll Pin | 20 | DV-10419 | 4 | Trip Rod Stop | 35 | DV-10422 | 1 | Motor Shaft Nut |
| 7 | TL-6617 | 1 | Motor Bearing | 21 | 550304 | 5 | Lock Screw | 36 | CP-9342 | 1 | Bearing Nut |
| | | | (Rear) | 22 | N37-483 | 5 | Nylon Plug | 37 | DVA-10182 | 1 | Swivel Pin |
| 8 | DV-10222 | 1 | Motor | 23 | DVB-10191 | 1 | Screw | 38 | 550306 | 1 | Screw |
| 9 | TL-9174 | 1 | Motor Bearing | 24 | DV-10327 | 1 | Grease Fitting | 39 | DVB-10192 | 1 | Support |
| | | | (Front) | 25 | VS-10379 | 1 | Key | 40 | DVA-10561 | 1 | Backing Plate |
| 10 | DVB-10417 | 1 | Trip Rod | 26 | DVB-10209 | 1 | Nut Housing | 41 | DV-10540 | 1 | Insulator |
| 11 | 300308 | 4 | Screw | 27 | DV-10311 | 1 | Spring | 42 | DV-10540 | 2 | Bushing |
| 12 | DVD-10199 | 1 | Control Housing | 28 | DV-1810 | 1 | Vertical Screw Nut | 43 | MD-3591 | 2 | Lockwasher |
| 13 | DVA-10195 | 1 | Cover | 29 | U-1811 | 1 | Lock Nut | 44 | 151020 | 2 | Screw |
| 14 | 5-1465 | 1 | Key | | | | | | | | |

WHEN ORDERING, GIVE KEY NUMBER, PART NUMBER, PART NAME AND COMPLETE SERIAL NUMBER WHICH IS LOCATED ON THE REAR OF THE HEADSTOCK FRAME

VARIABLE SPEED ACTUATOR ASSEMBLY FOR DV59



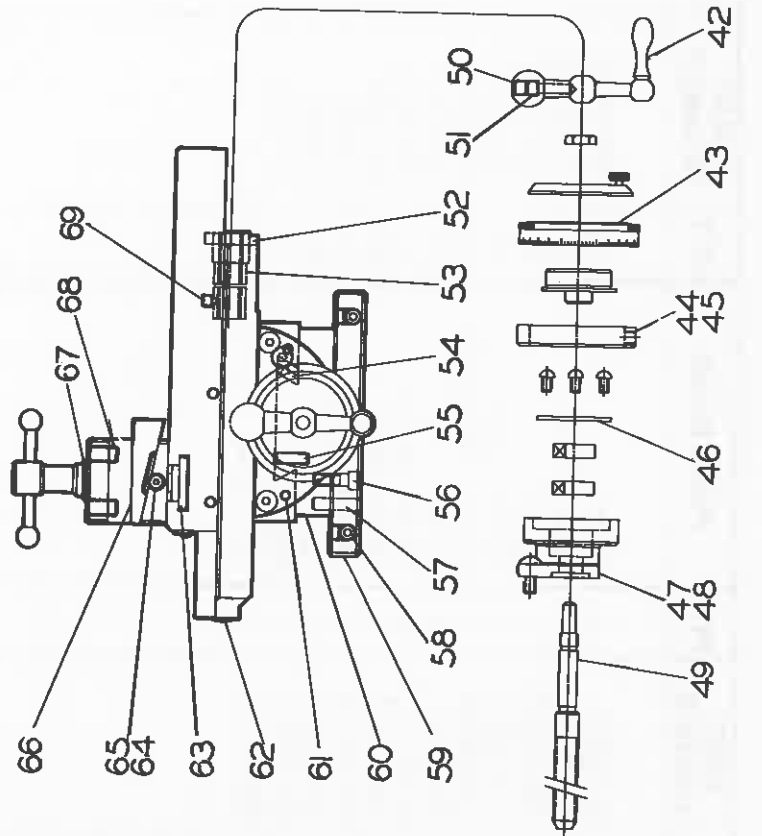
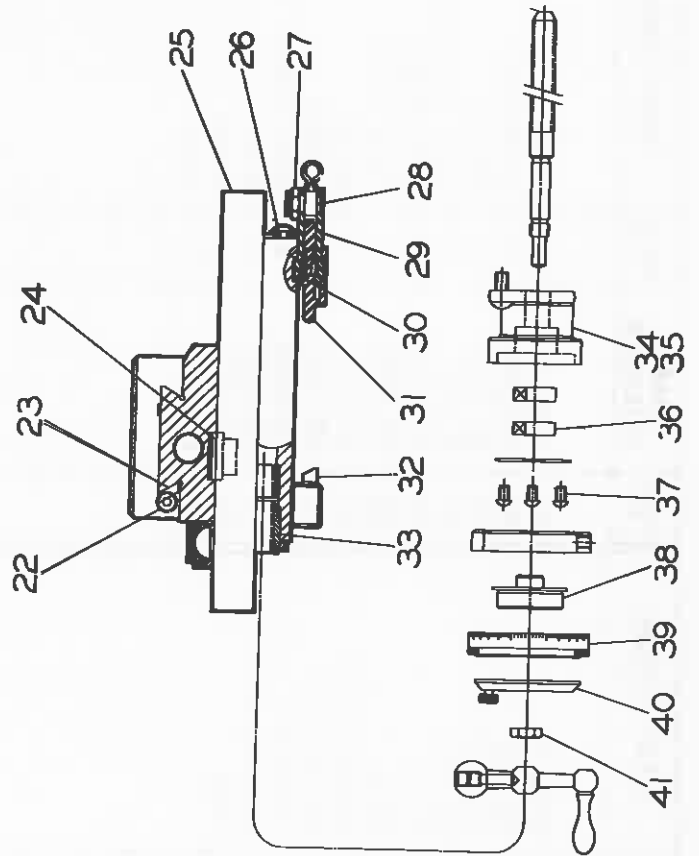
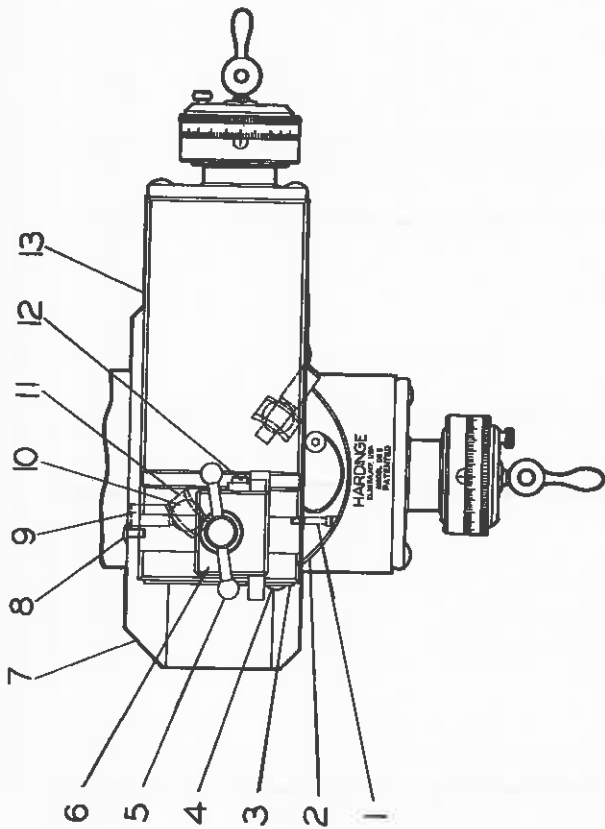
HARDINGE BROTHERS, INC., ELMIRA, NEW YORK, U.S.A.

COMPOUND SLIDE REST PARTS LIST FOR DV59

| KEY | PART NUMBER | PCS. | PART NAME | KEY | PART NUMBER | PCS. | PART NAME |
|-----|-------------|------|---------------------|-----|--------------|------|----------------------|
| 1 | 100110 | 2 | Screw | 36 | LH-7909 | 2pr | Bearings |
| 2 | DS-10725 | 1 | Magnifier Assembly | 37 | 350305 | 8 | Screw |
| 3 | DS-8050 | 1 | Wiper | 38 | LH-334 | 1 | Bushing |
| 4 | 300304 | 2 | Screw | 39 | HLE-10335-2 | 1 | Dial Assembly |
| 5 | DS-347 | 1 | Tool Post Handle | 40 | HL-10246 | 2 | Dial Lock and Washer |
| 6 | DS-10592 | 1 | Tool Block | 41 | R-331 | 2 | Nut |
| 7 | DSB-362 | 1 | Swivel Slide | 42 | TA-335 | 2 | Crank |
| 8 | 300306 | 2 | Retaining Screw | 43 | HLE-10335-1A | 1 | Dial Assembly |
| 9 | DS-363 | 2 | Eccentric | 44 | LH-407-1 | 2 | Zero Ring |
| 10 | DS-10625 | 2 | Lock Bolt | 45 | 550504 | 2 | Screw |
| 11 | DS-365 | 2 | Nut | 46 | R-7893 | 2 | Bearing Plate |
| 12 | DS-10591 | 1 | Screw | 47 | DSB-340 | 1 | End Cap |
| 13 | DSB-357 | 1 | Top Slide | 48 | 300610 | 4 | Screw |
| 14 | DS-6126 | 1 | Knob | 49 | DSA-325 | 2 | Feed Screw |
| 15 | DS-6158 | 1 | Handle | 50 | 550795 | 2 | Screw |
| 16 | DS-8291 | 1 | Link | 51 | TA-338 | 2 | Lock Screw |
| 17 | CM-2843 | 1 | Nut | 52 | DSA-1950 | 2 | Nut |
| 18 | 300306 | 1 | Screw | 53 | DSA-328 | 2 | Feed Screw Nut |
| 19 | DS-10509 | 1 | Retaining Latch | 54 | DSA-370 | 1 | Gib |
| 20 | 300508 | 2 | Screw | 55 | N-590512 | 2 | Screw |
| 21 | DS-8716 | 1 | Bracket | 56 | 100512 | 2 | Screw |
| 22 | 69-6160 | 4 | Gib Adjusting Screw | 57 | R-4853 | 2 | Dowel |
| 23 | DSA-358 | 1 | Gib | 58 | 550704 | 4 | Screw |
| 24 | DS-10624 | 1 | Pivot Plug | 59 | 6F-372 | 2 | Bed Stop |
| 25 | DSC-368 | 1 | Bottom Slide | 60 | DSB-371 | 1 | Base |
| 26 | DS-10568 | 1 | Bushing | 61 | CD-4629 | 4 | Dowel |
| 27 | DS-331 | 1 | Nut | 62 | CP-9360-4 | 2 | Expansion Plug |
| 28 | DS-8292 | 1 | Adjusting Screw | 63 | DS-10594 | 1 | Tee Bolt |
| 29 | DSL-8293 | 1 | Lower Link | 64 | 300104 | 1 | Screw |
| 30 | DSU-8293 | 1 | Upper Link | 65 | DS-10593 | 1 | Bent Washer |
| 31 | DS-8290 | 1 | Plunger | 66 | DS-10590 | 1 | Wedge |
| 32 | 6A-9423 | 2 | Lock Plug | 67 | 37-641 | 1 | Washer |
| 33 | DSA-328 | 2 | Feed Screw Nut | 68 | 550710 | 2 | Screw |
| 34 | 300610 | 4 | End Cap Screw | 69 | 590504 | 2 | Screw |
| 35 | DSB-343 | 1 | End Cap | | | | |

WHEN ORDERING PARTS, GIVE KEY NUMBER, PART NUMBER AND PART NAME. BE SURE :
GIVE COMPLETE SERIAL NUMBER WHICH IS STAMPED ON BOSS OF HEADSTOCK

COMPOUND SLIDE REST PARTS LIST FOR DV59



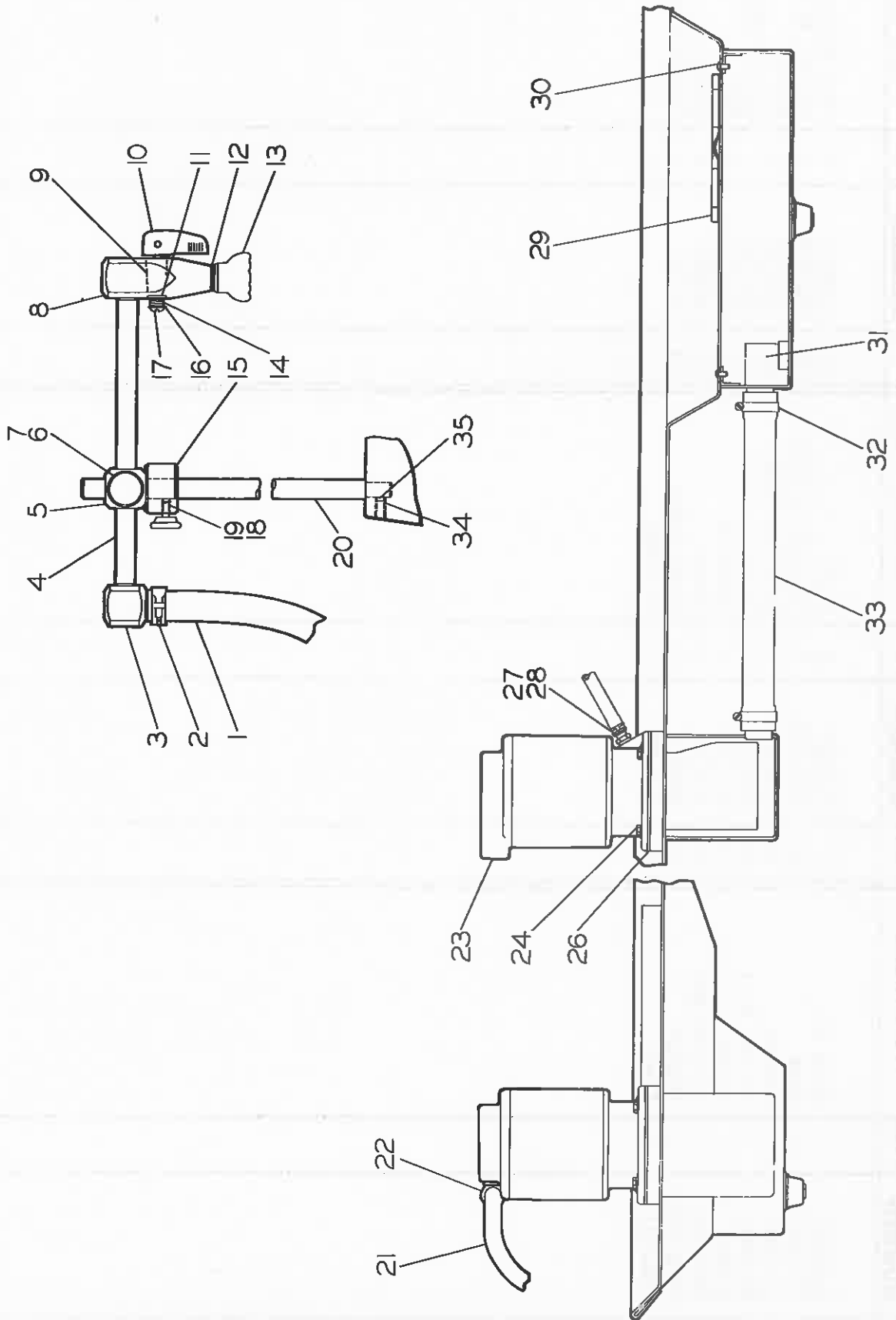
HARDINGE BROTHERS, INC., ELMIRA, NEW YORK, U.S.A.

COOLANT FACILITIES FOR DV59

| KEY | PART NUMBER | PCS. | PART NAME | KEY | PART NUMBER | PCS. | PART NAME | KEY | PART NUMBER | PCS. | PART NAME |
|-----|-------------|------|-----------------|-----|-------------|------|-------------|-----|-------------|------|----------------|
| 1 | 20-6965 | 1 | Hose | 13 | OFB-9468 | 1 | Nozzle | 24 | 150514 | 4 | Screw |
| 2 | UA-6966 | 1 | Hose Clamp | 14 | OF-10058 | 1 | Spring | 25 | CM-2845 | 4 | Lockwasher |
| 3 | OFA-9928 | 1 | Elbow | 15 | OF-10412 | 1 | Support | 26 | RA-8226 | 1 | Gasket |
| 4 | OFL-9924 | 1 | Elbow Support | 16 | CP-1067 | 1 | Washer | 27 | R-8384 | 1 | Hose Connector |
| 5 | OFA-9929 | 1 | Slide Connector | 17 | 350304 | 1 | Screw | 28 | UA-6966 | 1 | Hose Clamp |
| 6 | FB-6919 | 2 | Plug | 18 | U-4901 | 1 | Plug | 29 | VD-8686 | 1 | Slump Cover |
| 7 | UA-8710 | 2 | Thumb Screw | 19 | OR-9471 | 1 | Thumb Screw | 30 | 300508 | 4 | Screw |
| 8 | OFA-9467 | 1 | Valve Body | 20 | OF-9926 | 1 | Upright | 31 | IE-3313 | 1 | Screen |
| 9 | OF-10059 | 1 | Valve Insert | 21 | 10229 | 1 | Conduit | 32 | IE-6966 | 2 | Hose Clamp |
| 10 | OF-10060 | 1 | Lever | 22 | 10225 | 1 | Connector | 33 | VD-8221 | 1 | Hose |
| 11 | OF-10061 | 1 | Washer | 23 | IE-3325 | 1 | Pump | 34 | 550507 | 1 | Screw |
| 12 | OFA-9431 | 1 | "O" Ring | | | | | 35 | U-4901 | 1 | Plug |

WHEN ORDERING, GIVE KEY NUMBER, PART NUMBER, PART NAME AND COMPLETE SERIAL NUMBER WHICH IS LOCATED ON THE REAR OF THE HEADSTOCK FRAME

COOLANT FACILITIES FOR DV59

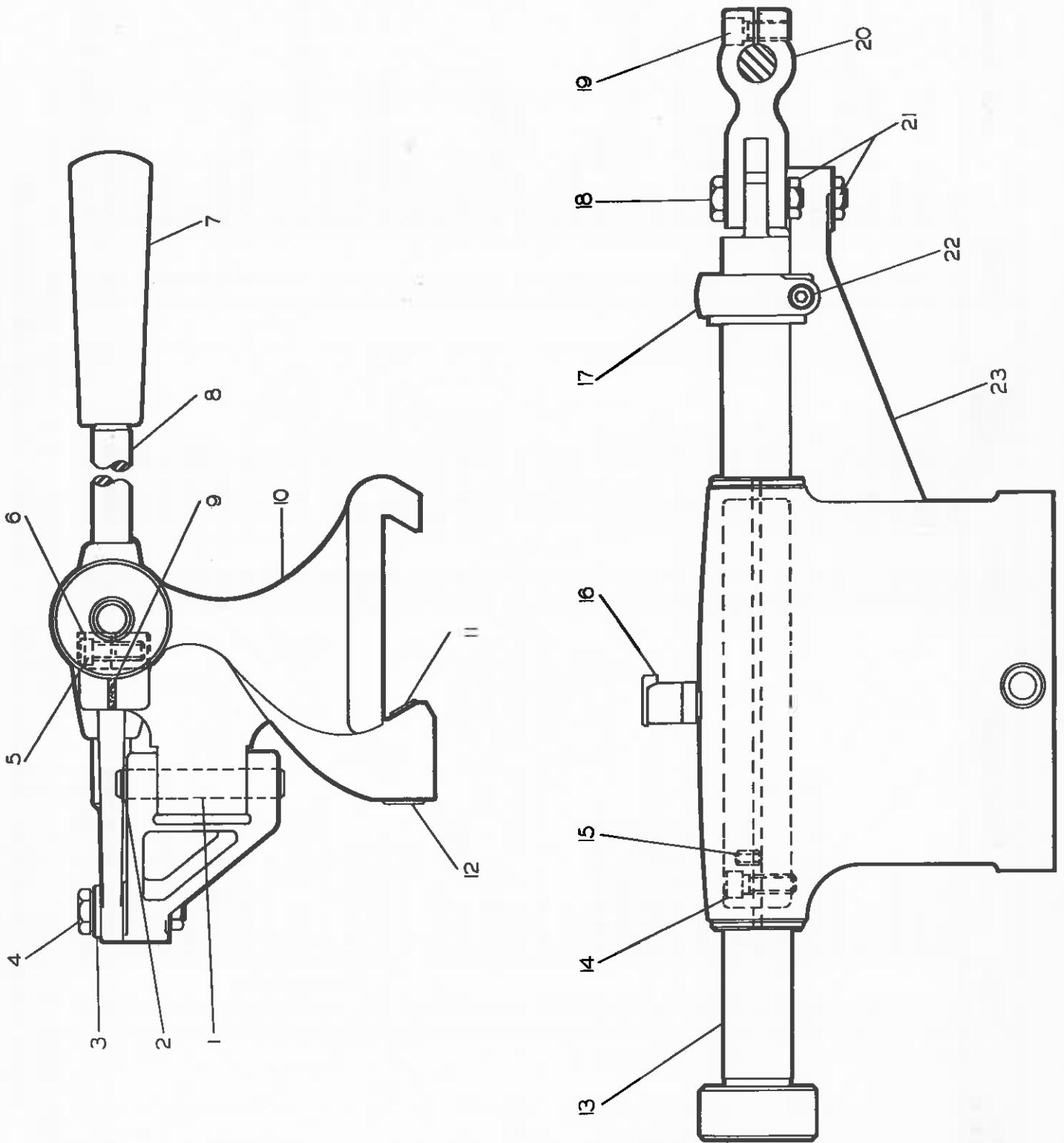


HARDINGE BROTHERS, INC., ELMIRA, NEW YORK U.S.A.

| KEY | PART NUMBER | PCS. | PART NAME | KEY | PART NUMBER | PCS. | PART NAME | KEY | PART NUMBER | PCS. | PART NAME |
|-----|-------------|------|-------------|-----|-------------|------|----------------|-----|-------------|------|-----------------|
| 1 | 6-8019 | 1 | Link Pin | 9 | 6-9696 | 1 | Felt | 17 | 6-8440 | 1 | Stop Bracket |
| 2 | 37-7913 | 1 | Ring | 10 | 69C-722 | 1 | Tailstock Body | 18 | 6B-8667 | 1 | Swivel Bolt |
| 3 | 37-641 | 1 | Washer | 11 | 6-9094 | 1 | Locking Plug | 19 | 100712 | 1 | Screw |
| 4 | 6A-8443 | 1 | Swivel Bolt | 12 | 6-9095 | 1 | Locking Screw | 20 | 6B-726 | 1 | Anchor Block |
| 5 | 100714 | 1 | Screw | 13 | 6C-741 | 1 | Spindle | 21 | U-4441 | 2 | Nut |
| 6 | 6B-8642 | 1 | Binding Nut | 14 | 100714 | 3 | Screw | 22 | 100620 | 1 | Screw |
| 7 | 79-A-8672 | 1 | Handle | 15 | 550510 | 3 | Stop Screw | 23 | 6-729 | 1 | Connecting Link |
| 8 | 79A-651 | 1 | Lever | 16 | 6-9695 | 1 | Oil Cup | | | | |

WHEN ORDERING, GIVE KEY NUMBER, PART NUMBER, PART NAME AND COMPLETE SERIAL NUMBER WHICH IS LOCATED ON THE REAR OF THE HEADSTOCK FRAME

END WORKING SLIDE FOR DV59



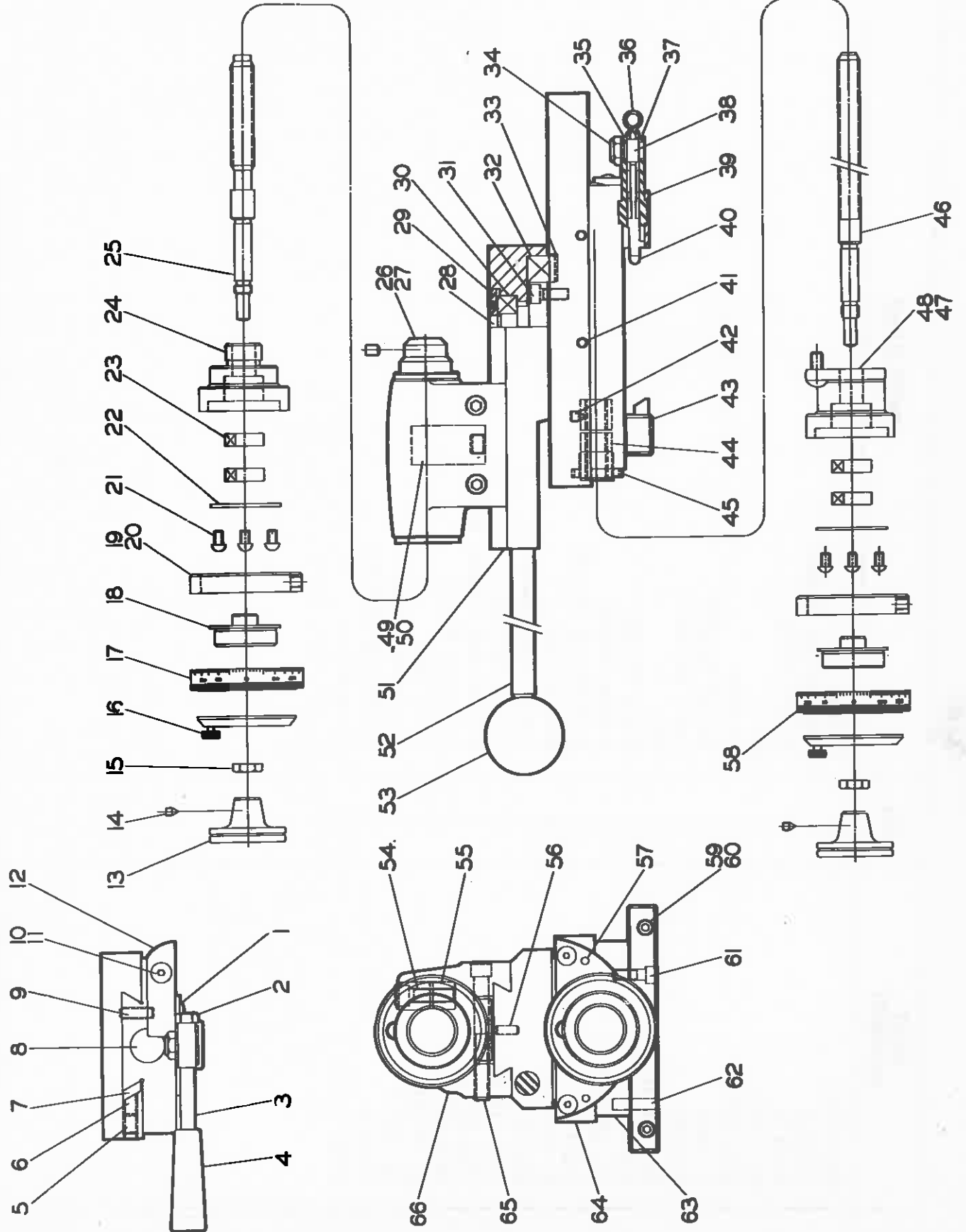
HARDINGE BROTHERS, INC., ELMIRA, NEW YORK, U.S.A.

RADIUS TURNING ATTACHMENT PARTS LIST FOR DV59

| KEY | PART NUMBER | PART NAME | KEY | PART NUMBER | PCS. | PART NAME | KEY | PART NUMBER | PCS. | PART NAME |
|-----|-------------|-------------------------|-----|-------------|------|-------------------------|-----|-------------|------|-------------------------|
| 1 | 300508 | Screw | 34 | DS-331 | 1 | Nut | | | 1 | Nut |
| 2 | CM-2843 | Nut | 35 | DSU-8293 | 1 | Upper Link | | | 1 | Upper Link |
| 3 | DS-6158 | Handle | 36 | DS-8291 | 1 | Link | | | 1 | Link |
| 4 | DS-6126 | Knob | 37 | DSL-8393 | 1 | Lower Link | | | 1 | Lower Link |
| 5 | 550807 | Screw | 38 | DS-8292 | 1 | Adjusting Screw | | | 1 | Adjusting Screw |
| 6 | RT-9114 | Locking Plug | 39 | DS-8716 | 1 | Bracket | | | 1 | Bracket |
| 7 | RB-370 | Gib | 40 | DS-8290 | 1 | Plunger | | | 1 | Plunger |
| 8 | DS-9193 | Expansion Plug | 41 | N-550316 | 4 | Gib Screw | | | 4 | Gib Screw |
| 9 | N-590512 | Screw | 42 | 590504 | 1 | Screw | | | 1 | Screw |
| 10 | 300306 | Screw | 43 | 6F-372 | 1 | Bed Stop | | | 1 | Bed Stop |
| 11 | DS-10568 | Bushing | 44 | DSA-328 | 1 | Feed Screw Nut | | | 1 | Feed Screw Nut |
| 12 | DS-10509 | Retaining Latch | 45 | DSA-1950 | 1 | Nut | | | 1 | Nut |
| 13 | RT-9104 | Handle | 46 | DSA-325 | 1 | Lower Feed Screw | | | 1 | Lower Feed Screw |
| 14 | RTA-9113 | Lock Screw | 47 | DSB-343 | 1 | End Cap | | | 1 | End Cap |
| 15 | R-331 | Nut | 48 | 300610 | 2 | Screw | | | 2 | Screw |
| 16 | HL-10246 | Washer & Screw Assembly | 49 | RT-402 | 1 | Nut | | | 1 | Nut |
| 17 | HLE-10335-1 | Dial & Support Assembly | 50 | 5-1467 | 1 | Pipe Plug | | | 1 | Pipe Plug |
| 18 | LH-334 | Bushing | 51 | RTA-9106 | 1 | Swivel Base | | | 1 | Swivel Base |
| 19 | LH-407-1 | Zero Ring | 52 | RTA-9120 | 1 | Lever | | | 1 | Lever |
| 20 | 550504 | Screw | 53 | RT-9119 | 1 | Ball | | | 1 | Ball |
| 21 | 350305 | Screw | 54 | 100714 | 1 | Screw | | | 1 | Screw |
| 22 | R-7893 | Plate | 55 | RT-9111 | 1 | Binding Nut | | | 1 | Binding Nut |
| 23 | LH-7909 | Bearings | 56 | TL-6615 | 2 | Dowel | | | 2 | Dowel |
| 24 | RTB-407 | End Bearing | 57 | CD-4629 | 2 | Dowel | | | 2 | Dowel |
| 25 | RTA-9103 | Feed Screw | 58 | HLE-10335-2 | 1 | Dial & Support Assembly | | | 1 | Dial & Support Assembly |
| 26 | RTA-9115 | Spindle | 59 | 550704 | 4 | Screw | | | 4 | Screw |
| 27 | 560605 | Screw | 60 | 6A-9423 | 2 | Lock Plug | | | 2 | Lock Plug |
| 28 | RTA-9108 | Pivot Post | 61 | 100512 | 2 | Screw | | | 2 | Screw |
| 29 | RT-9109 | Bearing Nut | 62 | R-4853 | 2 | Pin | | | 2 | Pin |
| 30 | RT-9227 | Upper Bearing | 63 | DSB-371 | 1 | Base | | | 1 | Base |
| 31 | 100610 | Screw | 64 | RTC-9107 | 1 | Bottom Slide | | | 1 | Bottom Slide |
| 32 | RT-11064 | Lower Bearing | 65 | 100844 | 2 | Screw | | | 2 | Screw |
| 33 | RT-7852 | Sealing Ring | 66 | RTB-9101 | 1 | Tool Holder Body | | | 1 | Tool Holder Body |

WHEN ORDERING PARTS, GIVE KEY NUMBER, PART NUMBER AND PART NAME. BE SURE TO GIVE COMPLETE SERIAL NUMBER WHICH IS STAMPED ON BOSS OF HEADSTOCK.

RADIUS TURNING ATTACHMENT PARTS LIST FOR DV59



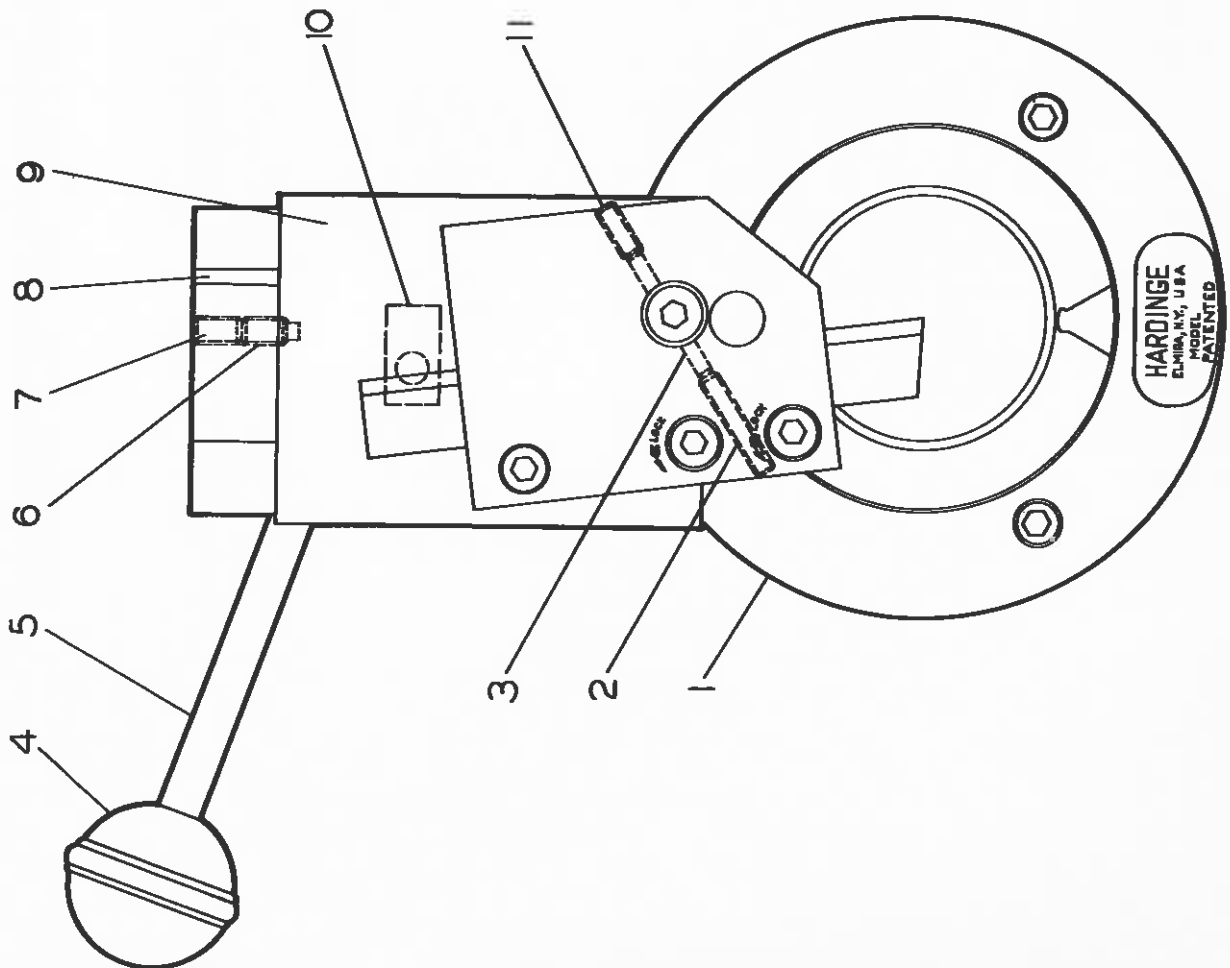
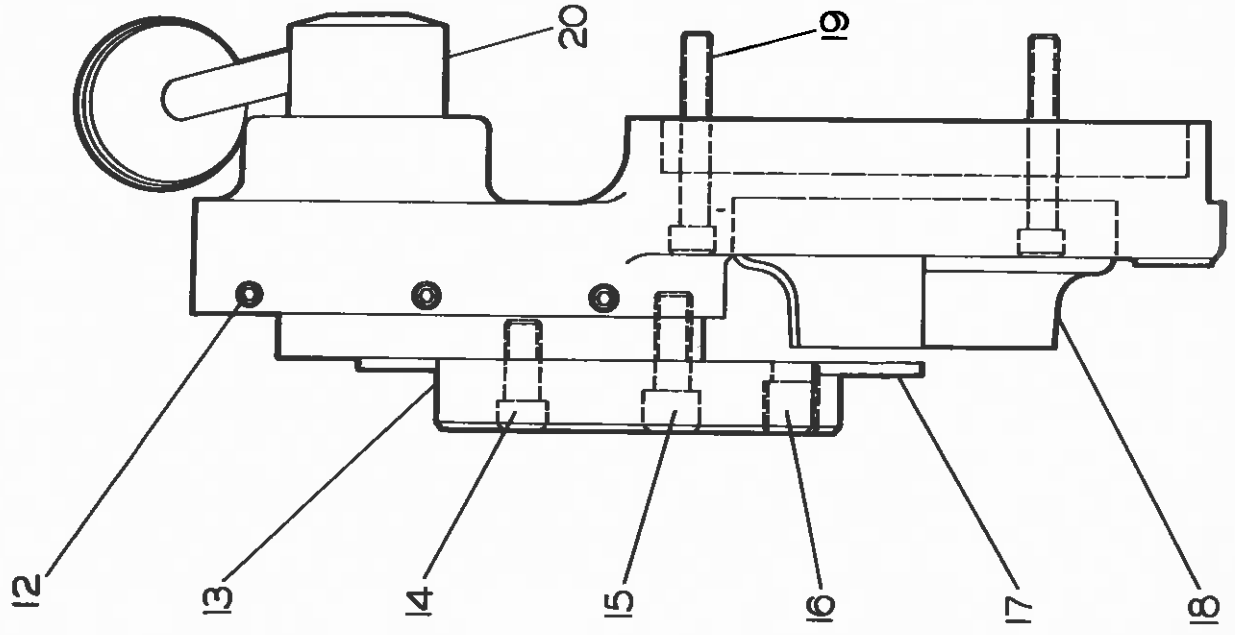
HARDINGE BROTHERS, INC., ELMIRA, NEW YORK, U.S.A.

VERTICAL CUT-OFF ATTACHMENT FOR DV59

| KEY | PART NUMBER | PCS. | PART NAME |
|-----|-------------|------|-----------------------|
| 1 | VCC-9611 | 1 | Frame |
| 2 | 550316 | 1 | Adjusting Screw |
| 3 | 9-8174 | 2 | Brass Plug |
| 4 | MD-3285 | 1 | Knob |
| 5 | VCB-9617 | 1 | Handle |
| 6 | U-4650 | 1 | Pilot Screw |
| 7 | 550607 | 1 | Lock Screw |
| 8 | VCC-9618 | 1 | Gib |
| 9 | VCF-9613 | 1 | Tool Slide |
| 10 | VC-10988 | 1 | Guide Block |
| 11 | 550308 | 1 | Adjusting Screw |
| 12 | N-550310 | 3 | Gib Screw |
| 13 | VCE-9724 | 1 | Tool Bit Clamp |
| 14 | VCA-10503 | 1 | Pivot Screw |
| 15 | VCA-10110 | 1 | Adjusting Clamp Screw |
| 16 | VCA-10024 | 2 | Locking Screw |
| 17 | VC-9639 | 1 | Tool Bit |
| 18 | VC-6407 | 1 | Coolant Shield |
| 19 | 100536 | 3 | Mounting Screw |
| 20 | VCB-9753 | 1 | Eccentric |

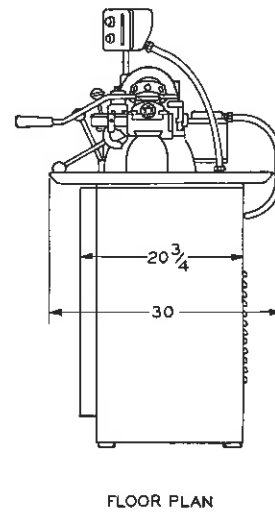
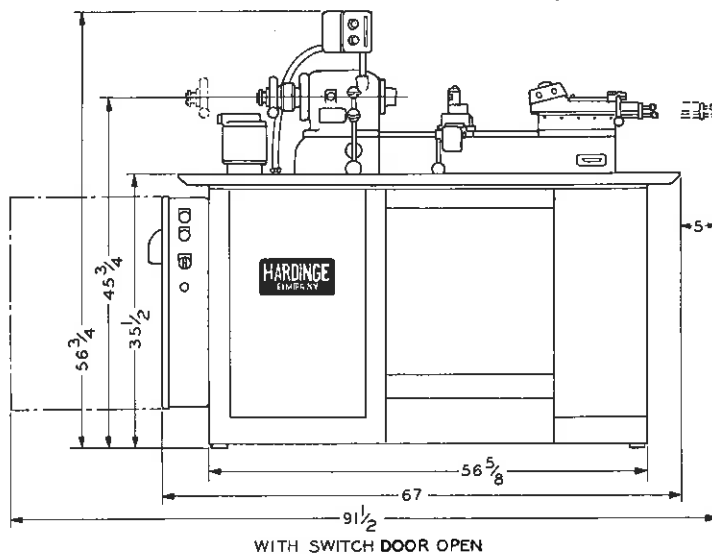
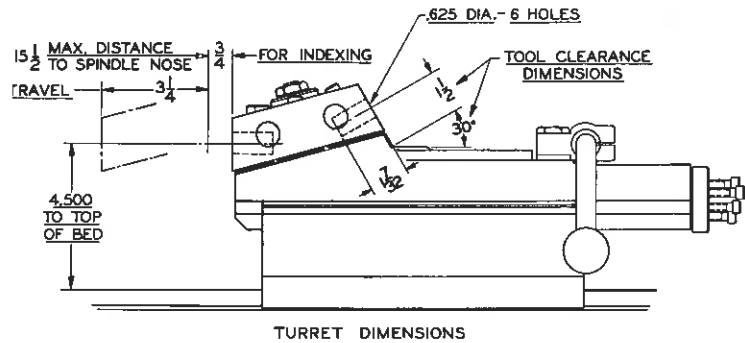
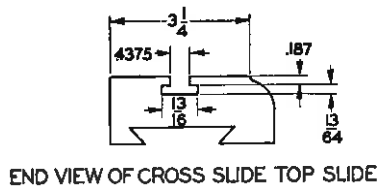
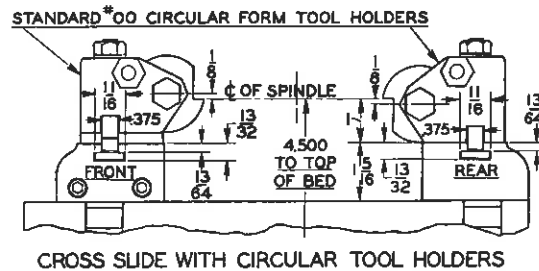
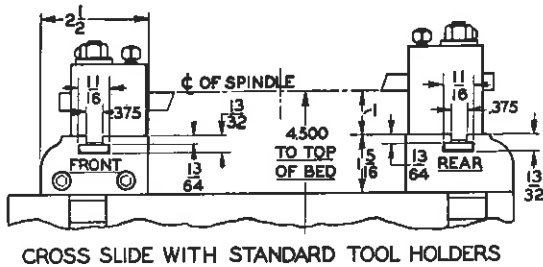
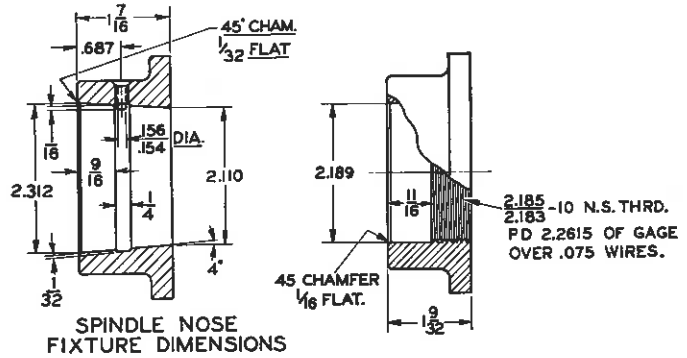
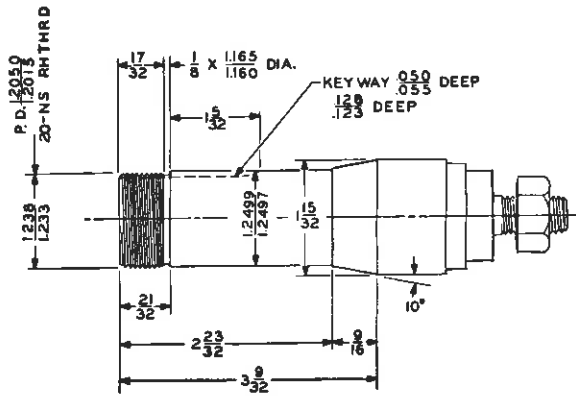
WHEN ORDERING, GIVE KEY NUMBER, PART NUMBER, PART NAME AND COMPLETE SERIAL NUMBER WHICH IS LOCATED ON THE REAR OF THE HEADSTOCK FRAME

VERTICAL CUT-OFF ATTACHMENT FOR DV59



HARDINGE BROTHERS, INC., ELMIRA, NEW YORK, U.S.A.

Tooling Dimensions and Floor Plan



HARDINGE

DOVETAIL BED

HARDENED AND GROUND STEEL

This page is taken from a brochure for the DSM-59, but the dimensions should be the same for the DV-59 of the same period.