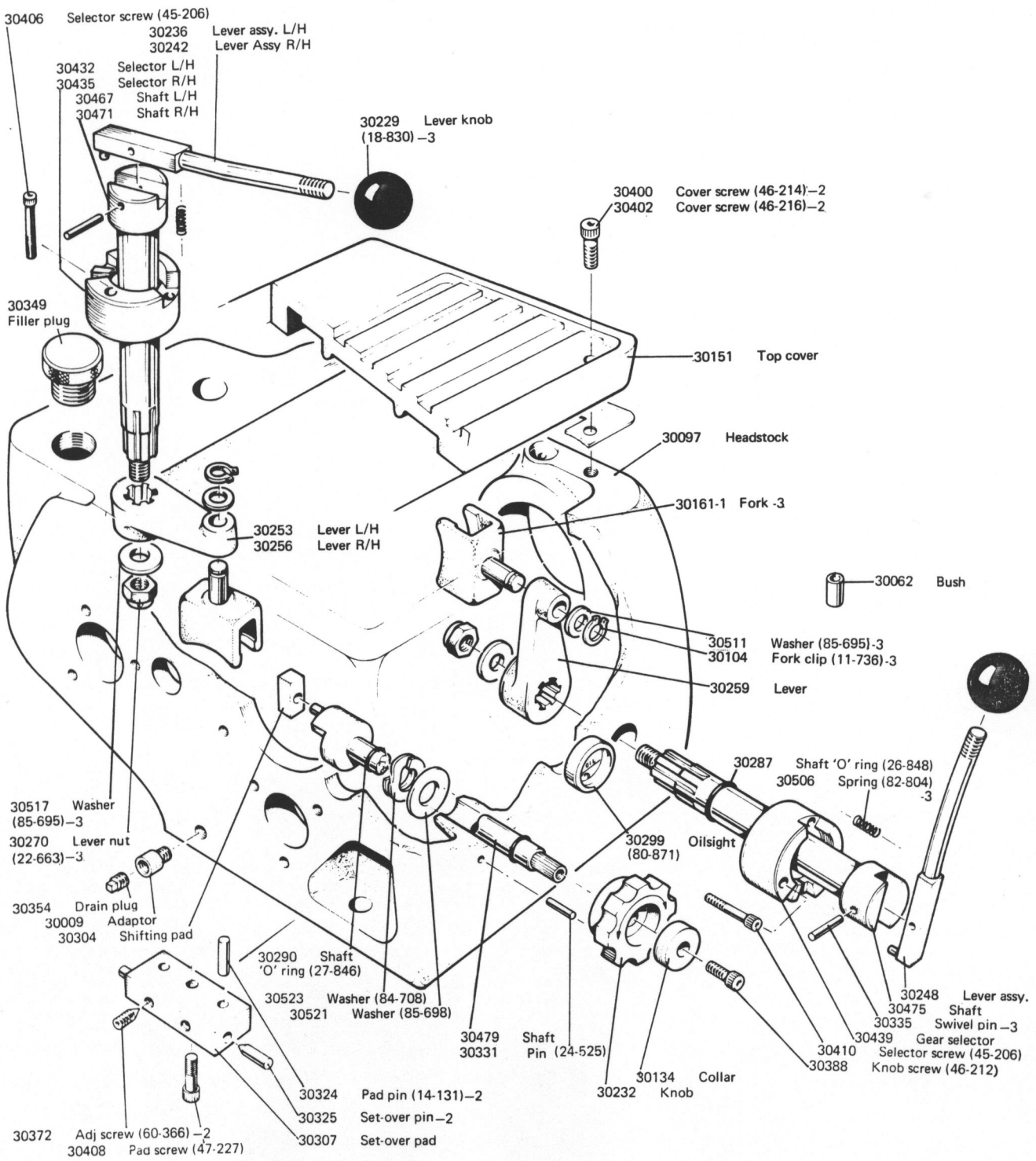


# **SPARE PARTS SECTION**

When ordering spares for your Colchester Lathe, it is essential to quote the Serial Number, stamped on the bed at the tailstock end. This will ensure rapid service.

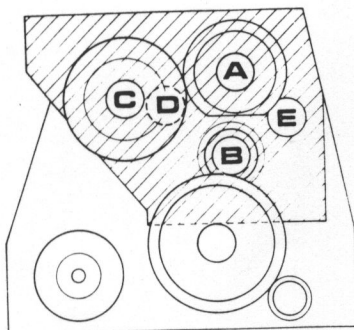
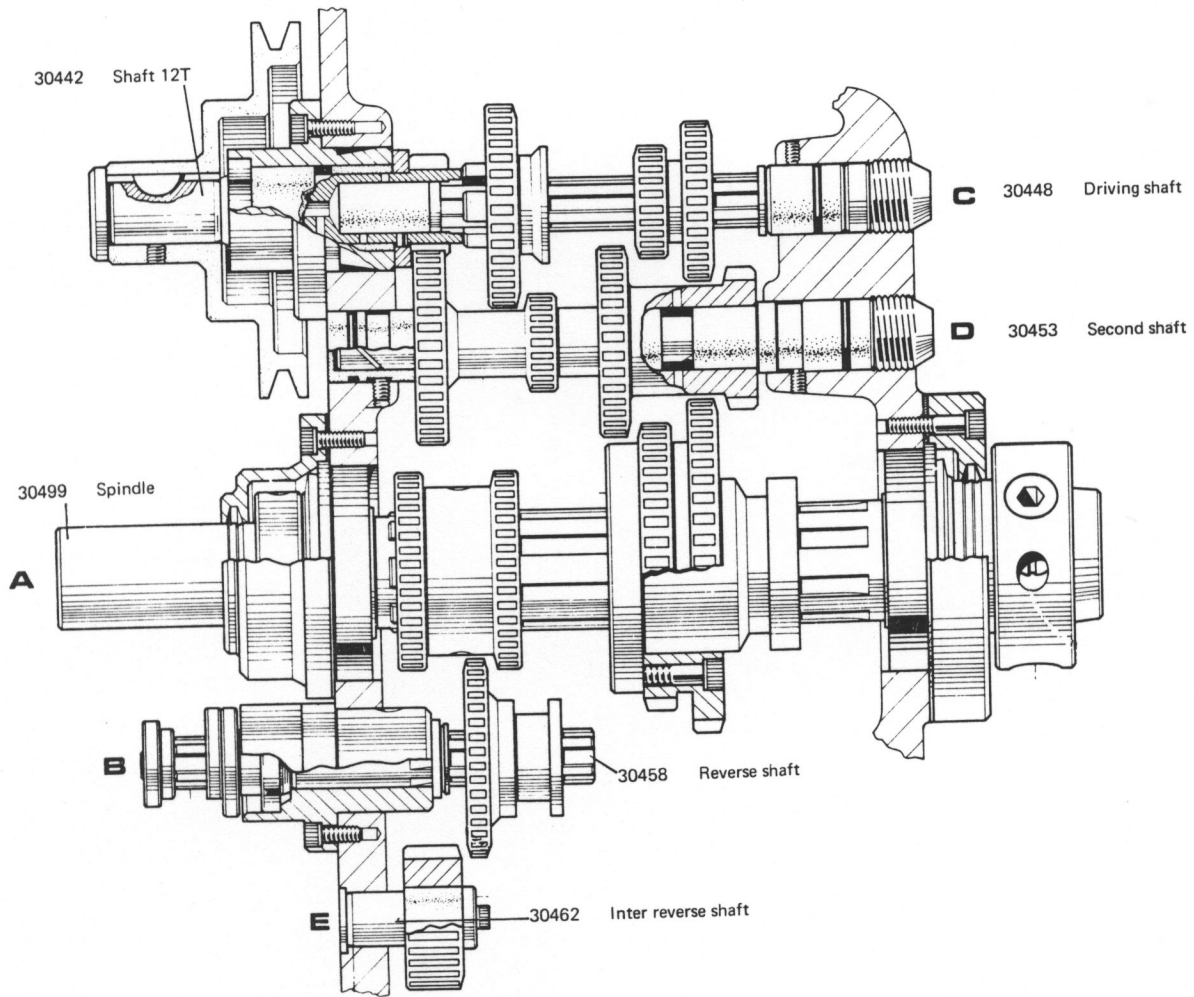
# HEADSTOCK CASTINGS & LEVERS

FROM SER. NO. AA 4310  
TO SER. NO.



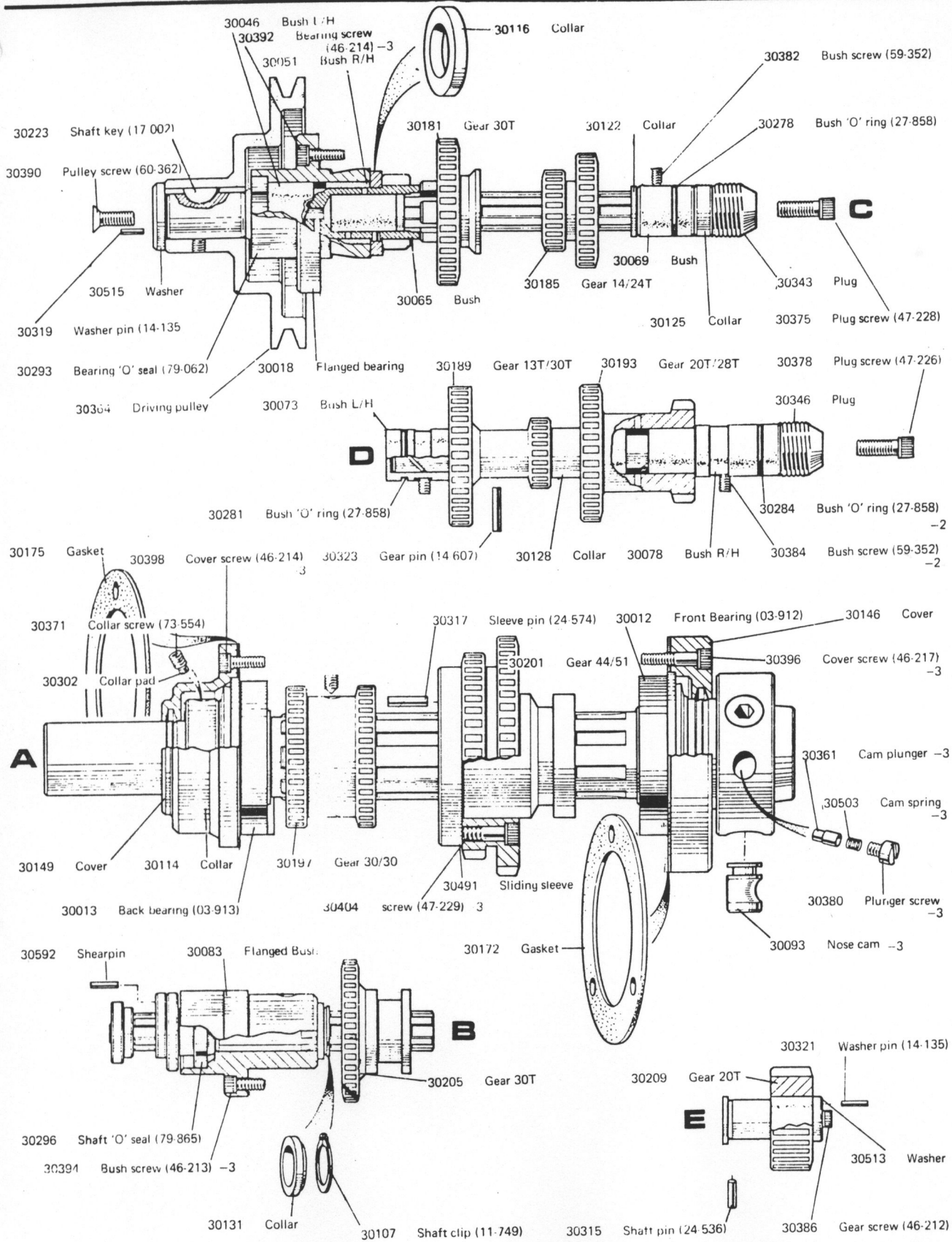
# HEADSTOCK SHAFTS

FROM SER. NO. AA 3079  
TO SER. NO.



# HEADSTOCK GEARING

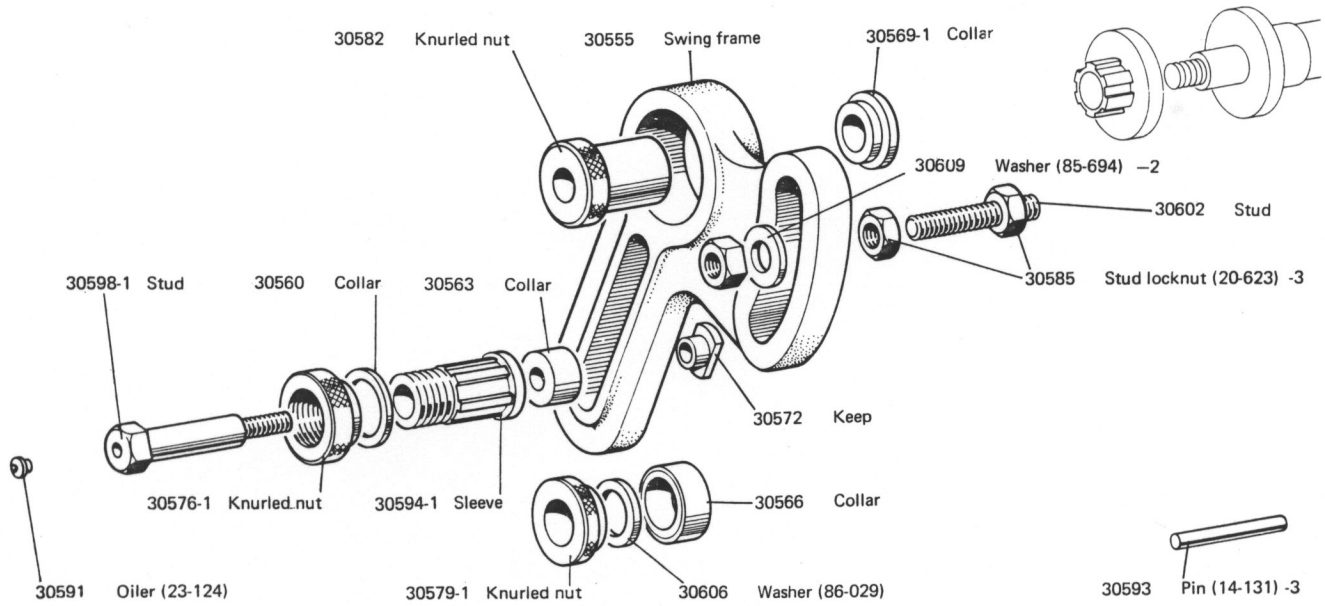
FROM SER. NO. AA 1300  
TO SER. NO.



BAN-33-7101

# SWING FRAME & CHANGE GEARS

FROM SER. NO. AA 4721  
TO SER. NO.



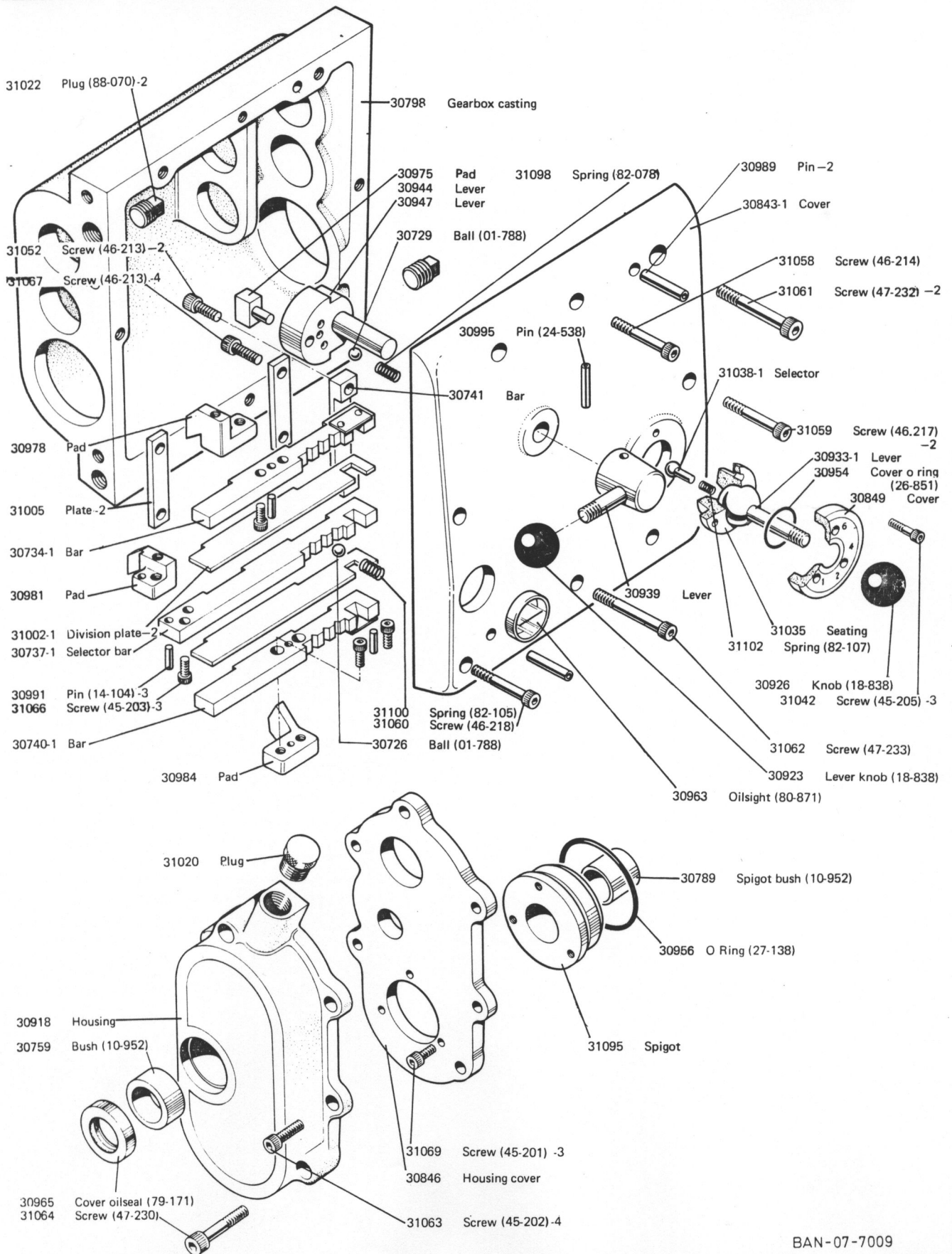
CHANGE GEARS	
ENGLISH GEARBOX	
LATHE Code EAGLE	
21T	1 OFF
30T	1 OFF
35T	1 OFF
36T	1 OFF
39T	1 OFF
42T	1 OFF
49T	1 OFF
55T	1 OFF
57T	1 OFF
60T	1 OFF
100T	1 OFF
120T	1 OFF
127T	1 OFF
69T	1 OFF

CHANGE GEARS	
CONTINENTAL GEARBOX	
LATHE Code CONDOR	
18T	1 OFF
21T	1 OFF
28T	1 OFF
30T	1 OFF
33T	1 OFF
35T	1 OFF
45T	1 OFF
55T	1 OFF
60T	1 OFF
75T	1 OFF
100T	1 OFF
120T	1 OFF
127T	1 OFF

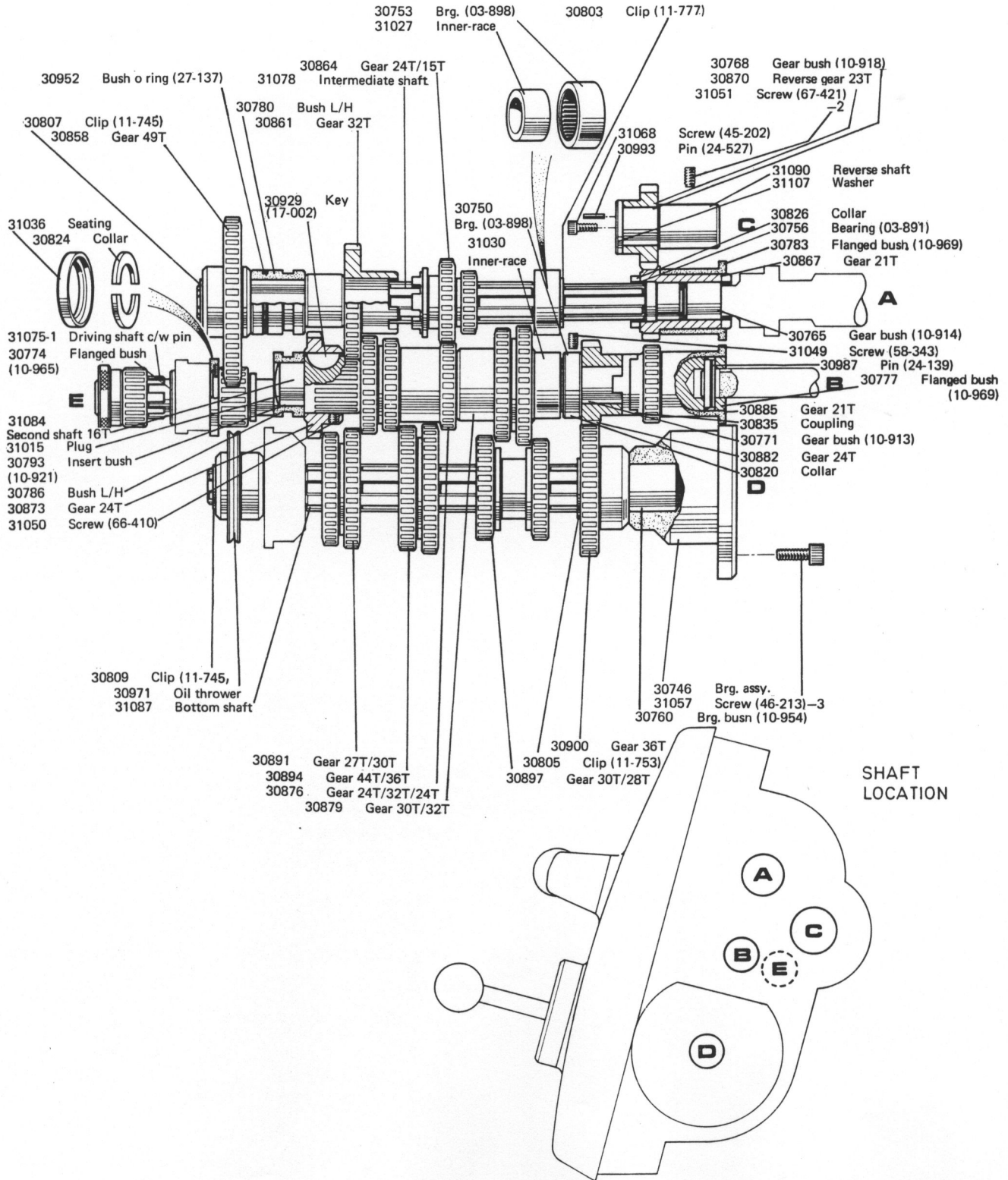
30627	18T Change gears
30629	20T Change gears
30630	21T Change gears
30634	25T Change gears
30637	28T Change gears
30639	30T Change gears
30641	32T Change gears
30642	33T Change gears
30644	35T Change gears
30645	36T Change gears
30648	39T Change gears
30651	42T Change gears
30654	45T Change gears
30658	49T Change gears
30659	50T Change gears
30664	55T Change gears
30666	57T Change gears
30669	60T Change gears
30674	65T Change gears
30678	69T Change gears
30679	70T Change gears
30681	72T Change gears
30684	75T Change gears
30696	100T Change gears
30699	110T Change gears
30702	120T Change gears
30708	127T Change gears

# GEARBOX GEARS & LEVERS

FROM SER. NO. 6449  
TO SER. NO.

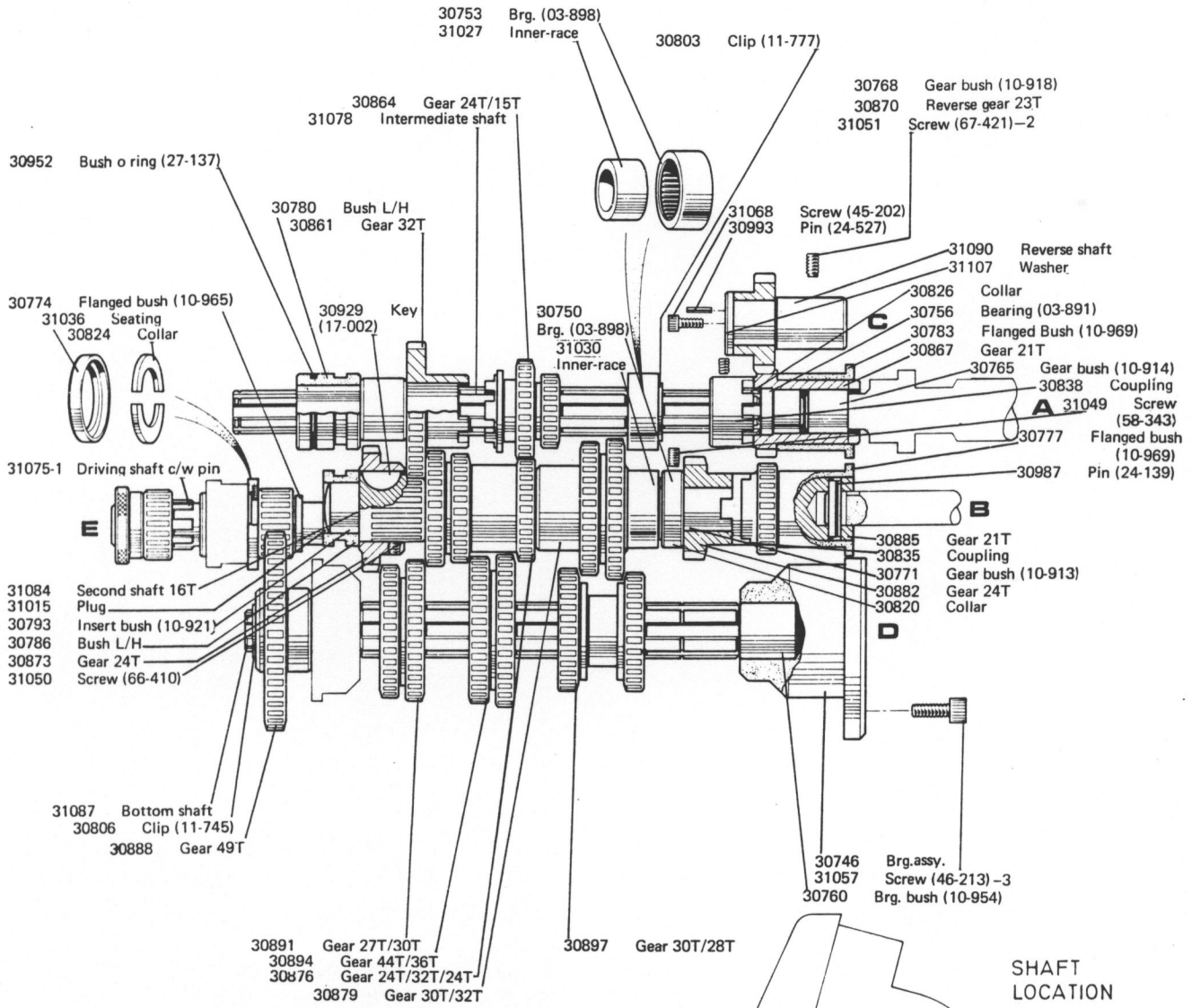


BAN-07-7009



# GEARBOX GEARS & SHAFTS - METRIC

FROM SER. NO. AA 4721  
TO SER. NO.

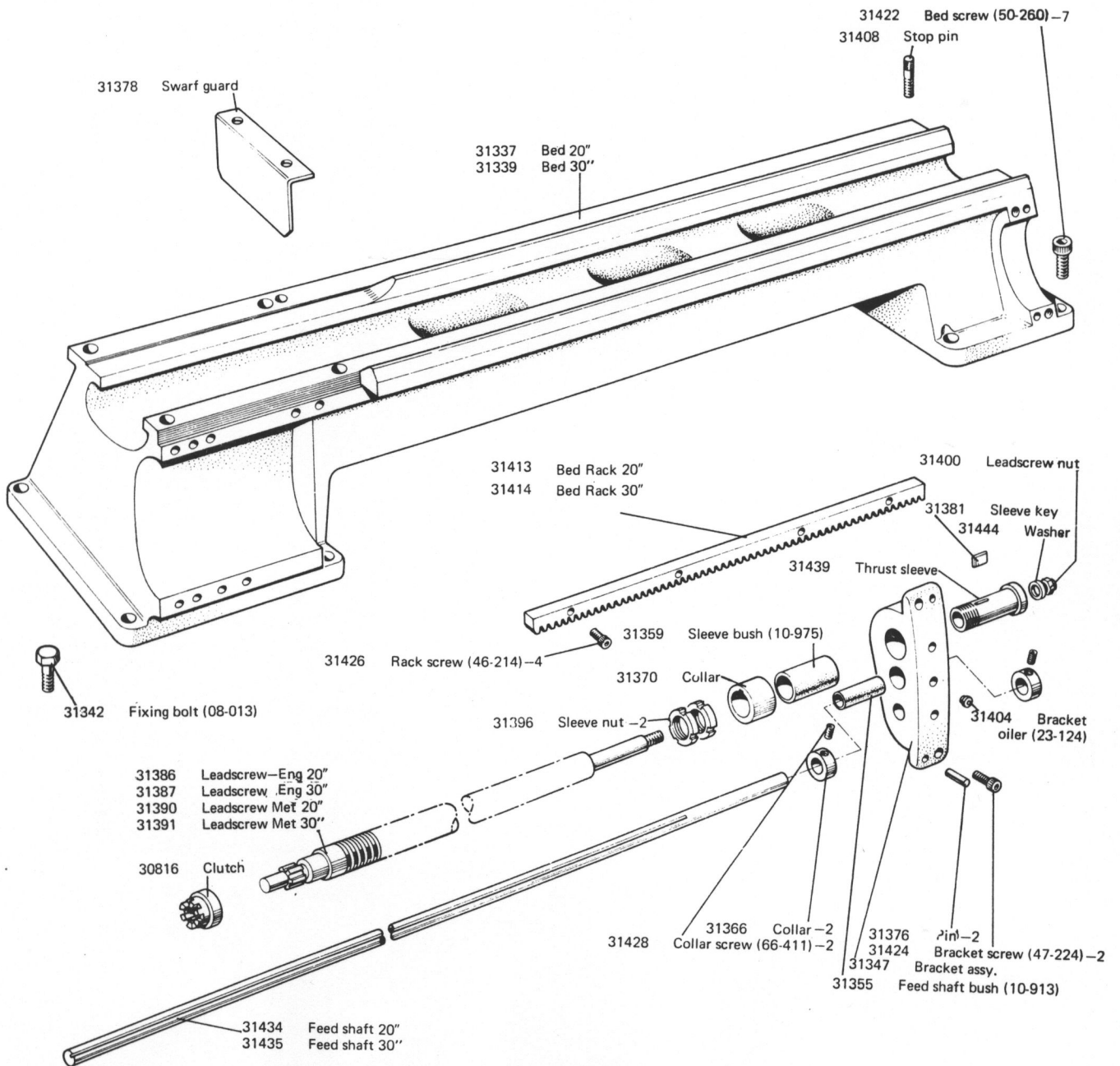


BAN-06-7009



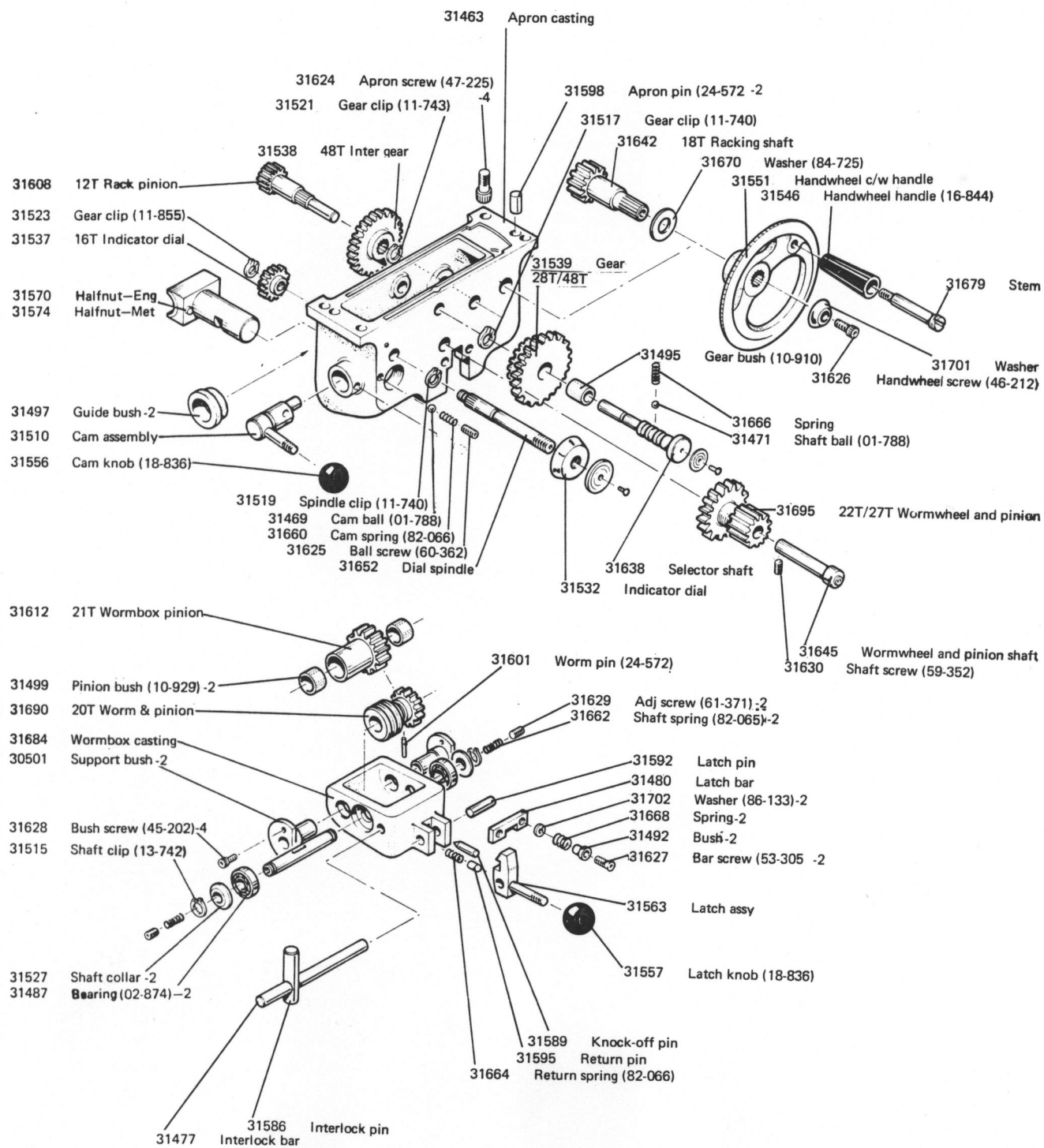
**BED**

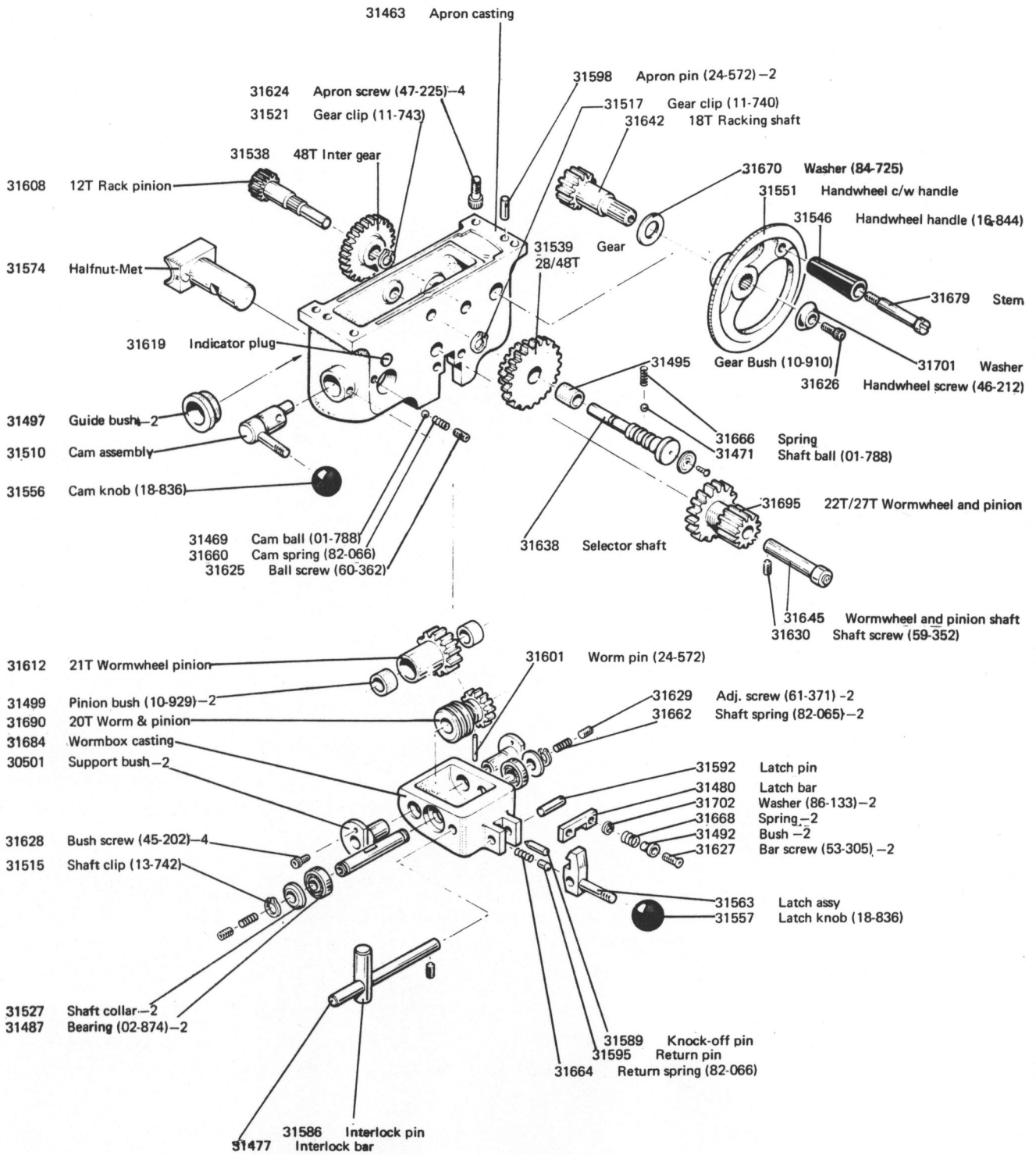
FROM SER. NO. AA 5058  
TO SER. NO.



# APRON - ENGLISH

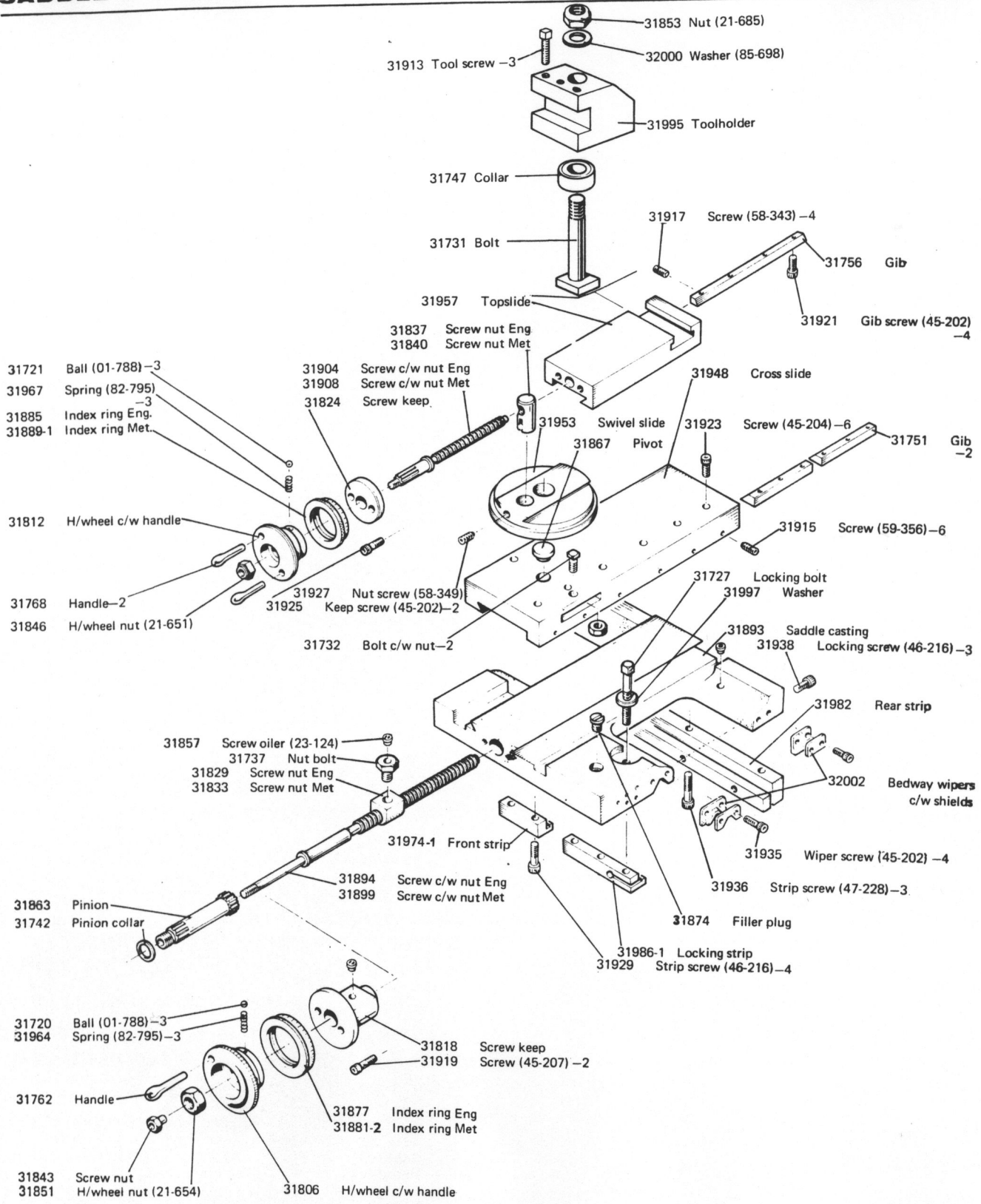
FROM SER. NO. 2333  
TO SER. NO.

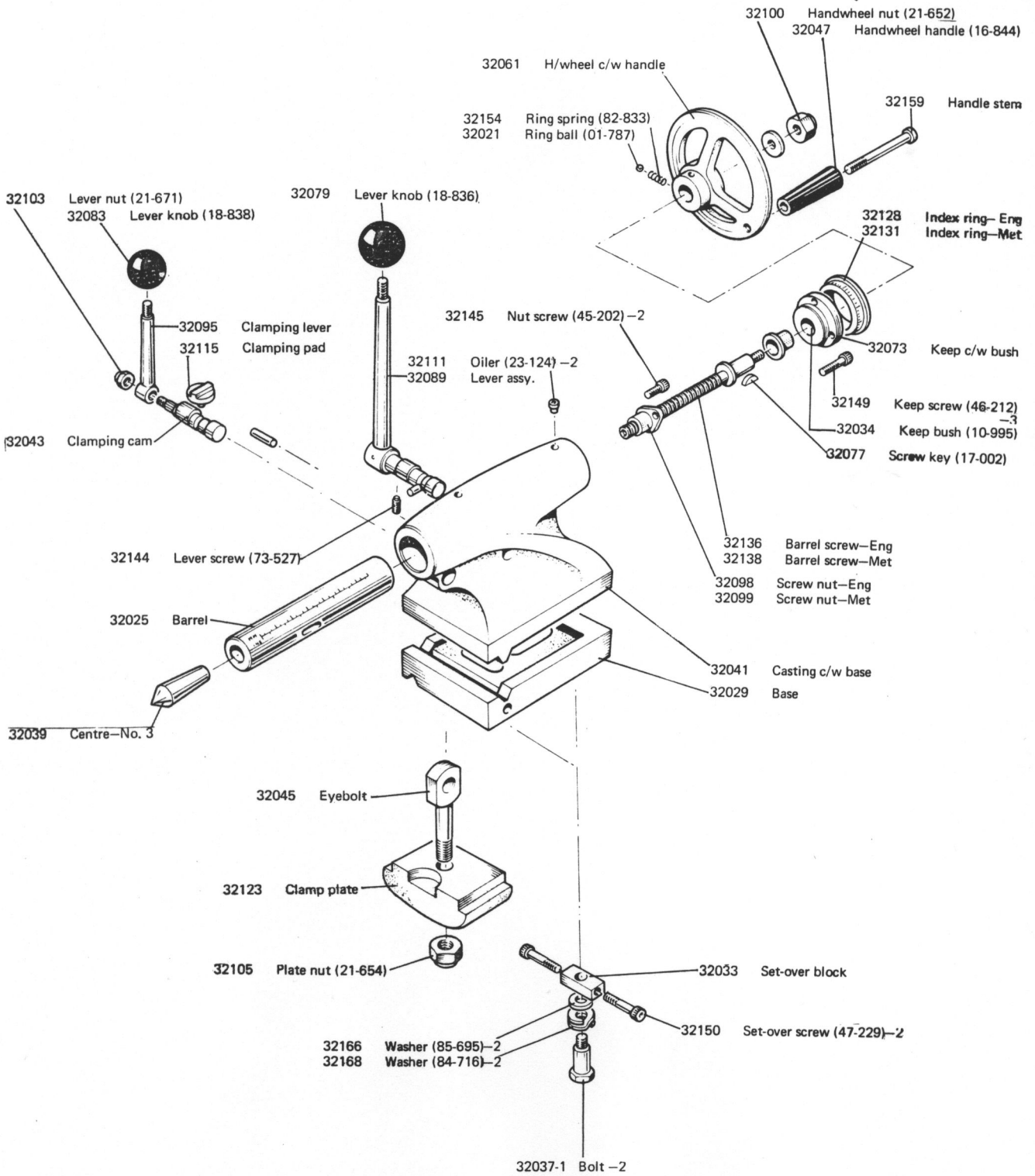




# SADDLE & SLIDES

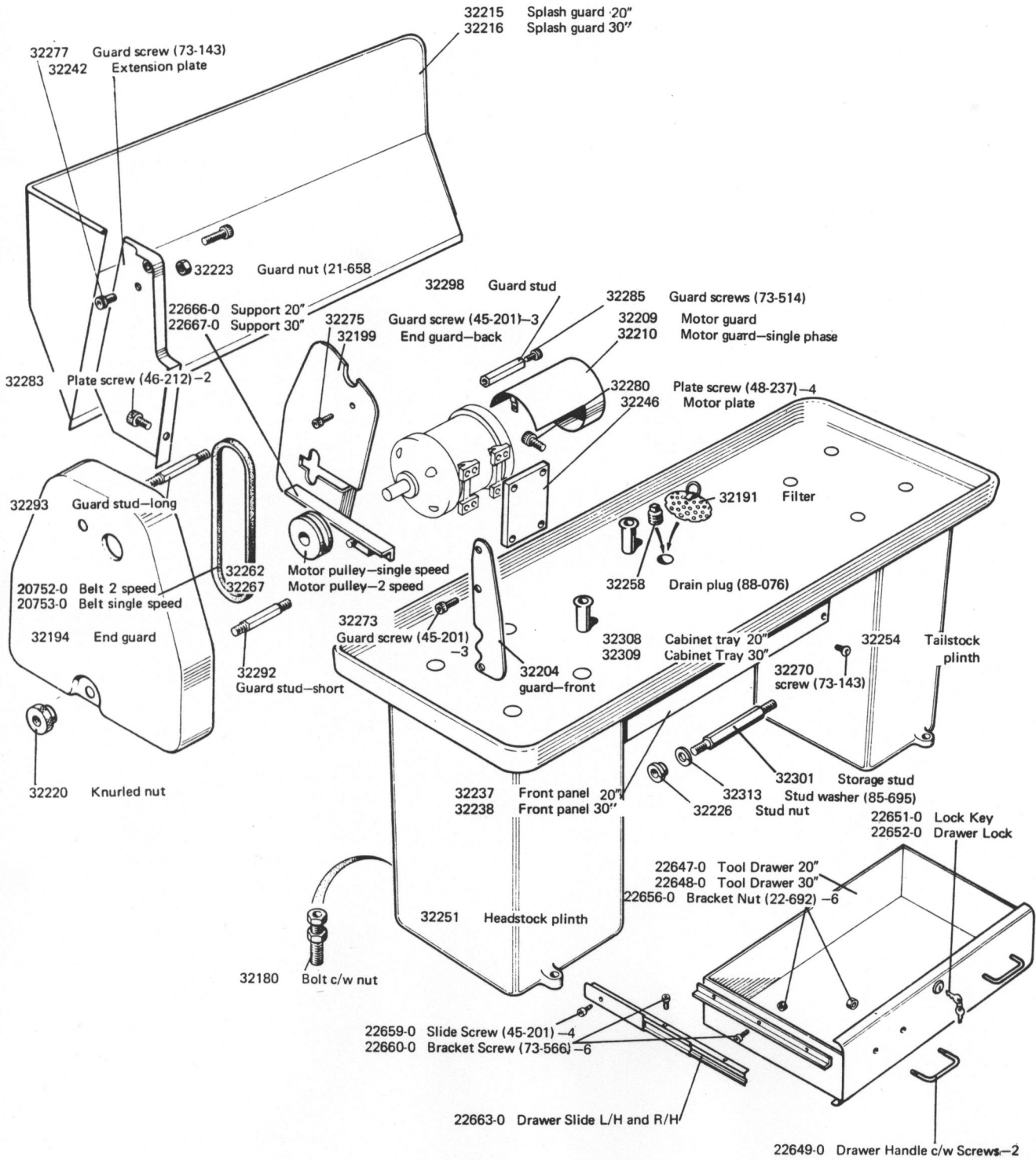
FROM SER. NO. 6559  
TO SER. NO.





# CABINET ASSEMBLY

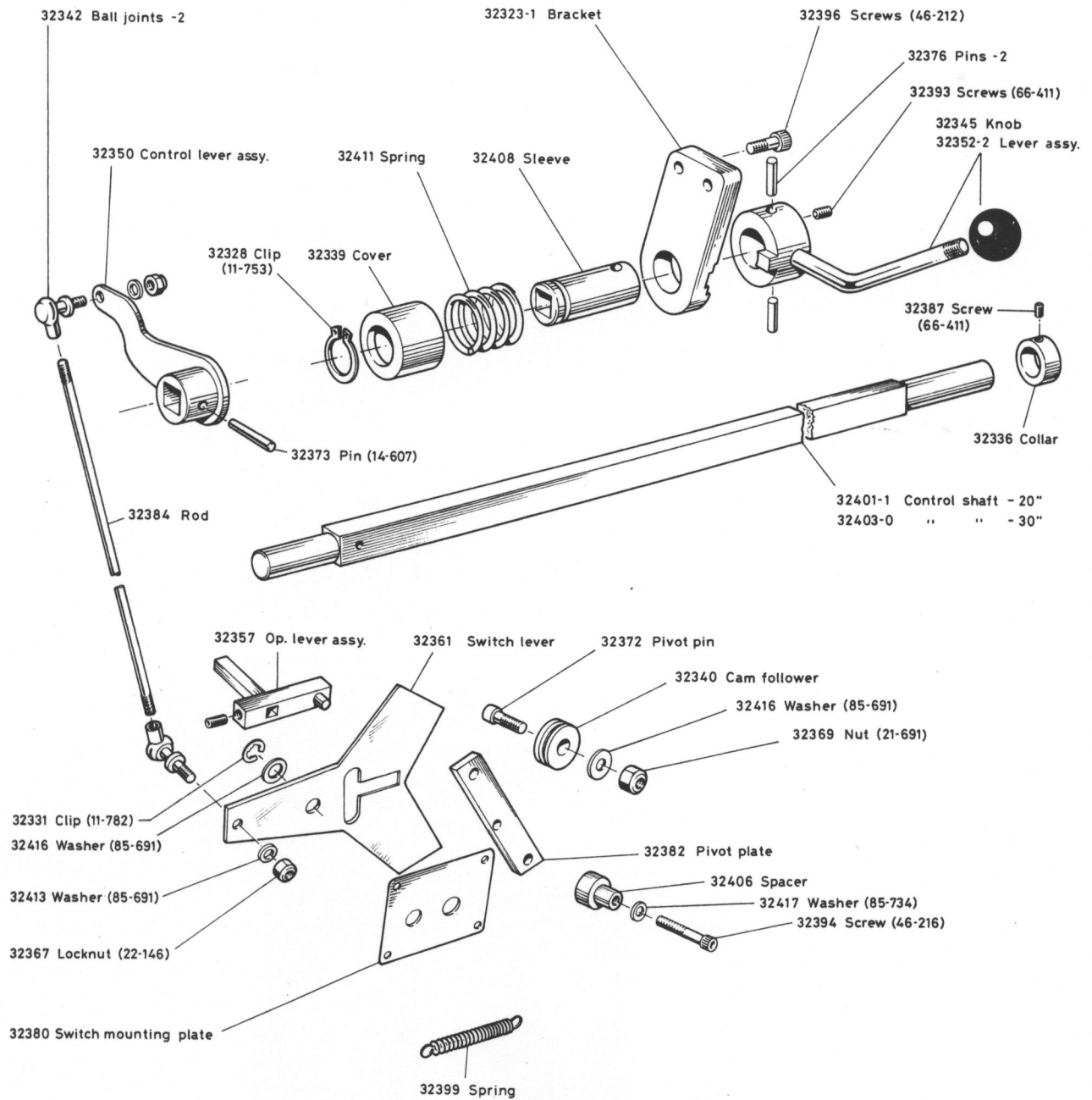
FROM SER. NO. 5058  
TO SER. NO.



BAN-13-7008

# APRON CONTROL

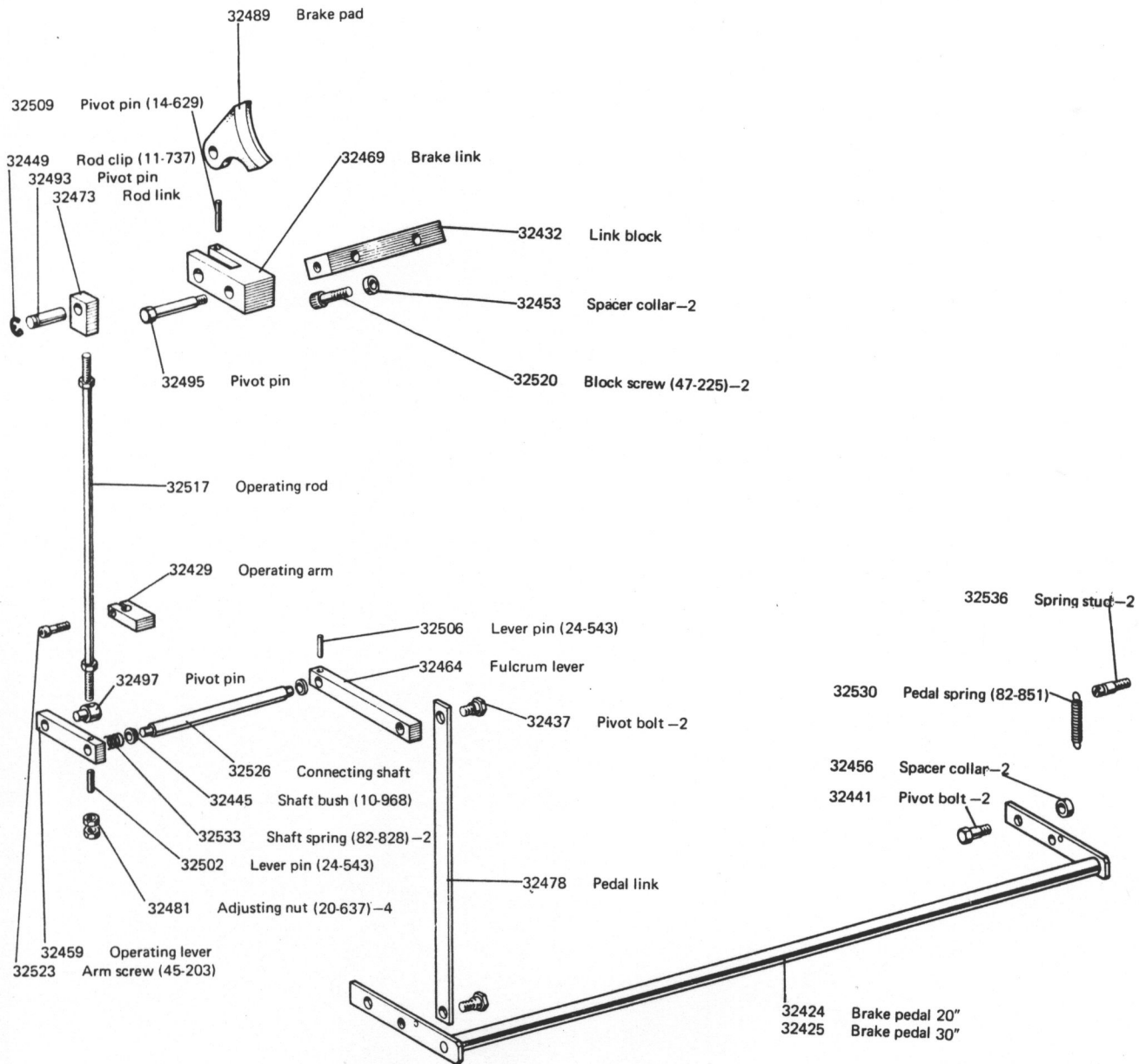
From Serial No. 9395  
To Serial No. ....



BAN-14-7502

# BRAKE ASSEMBLY

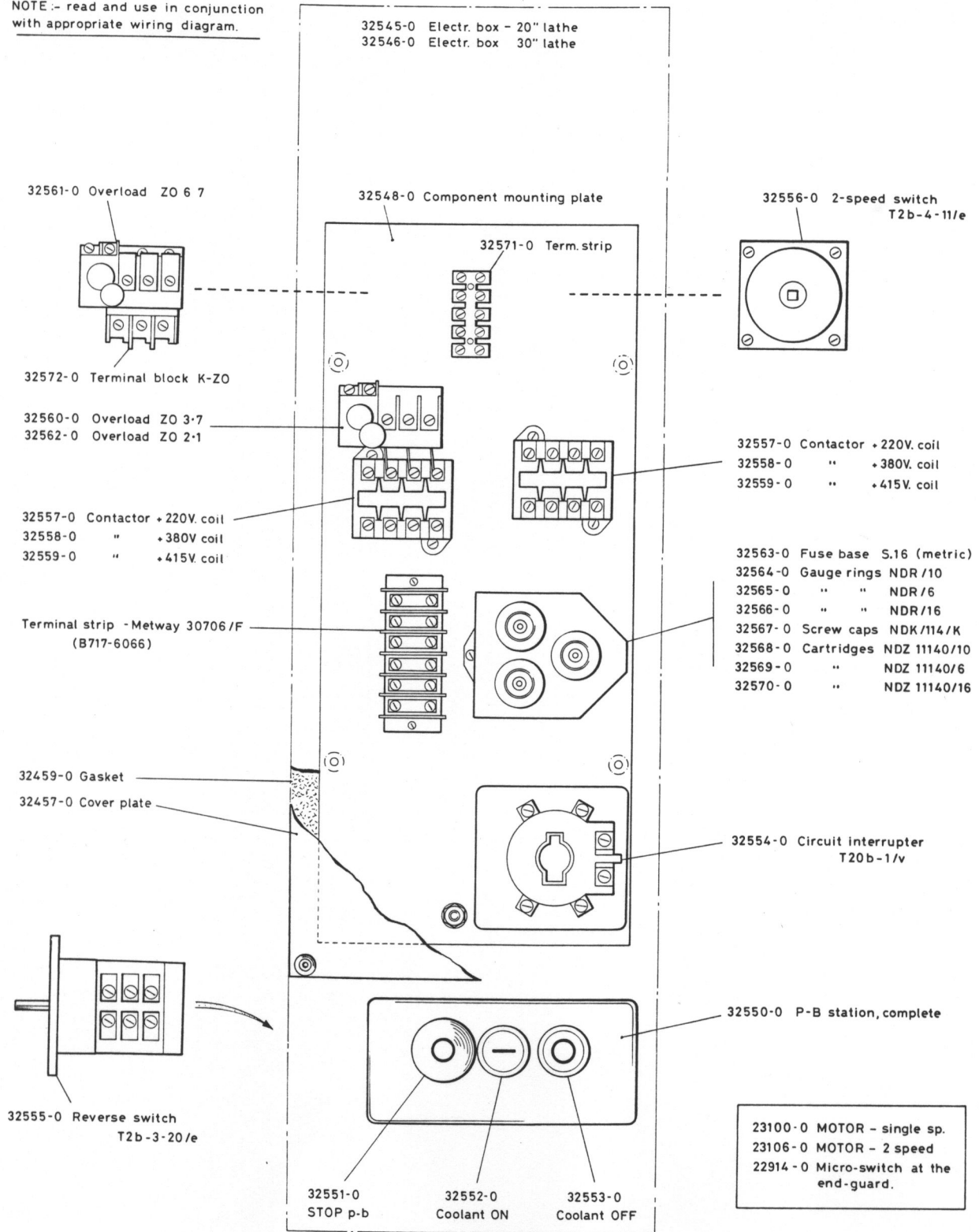
FROM SER. NO. AA 5058  
TO SER. NO.



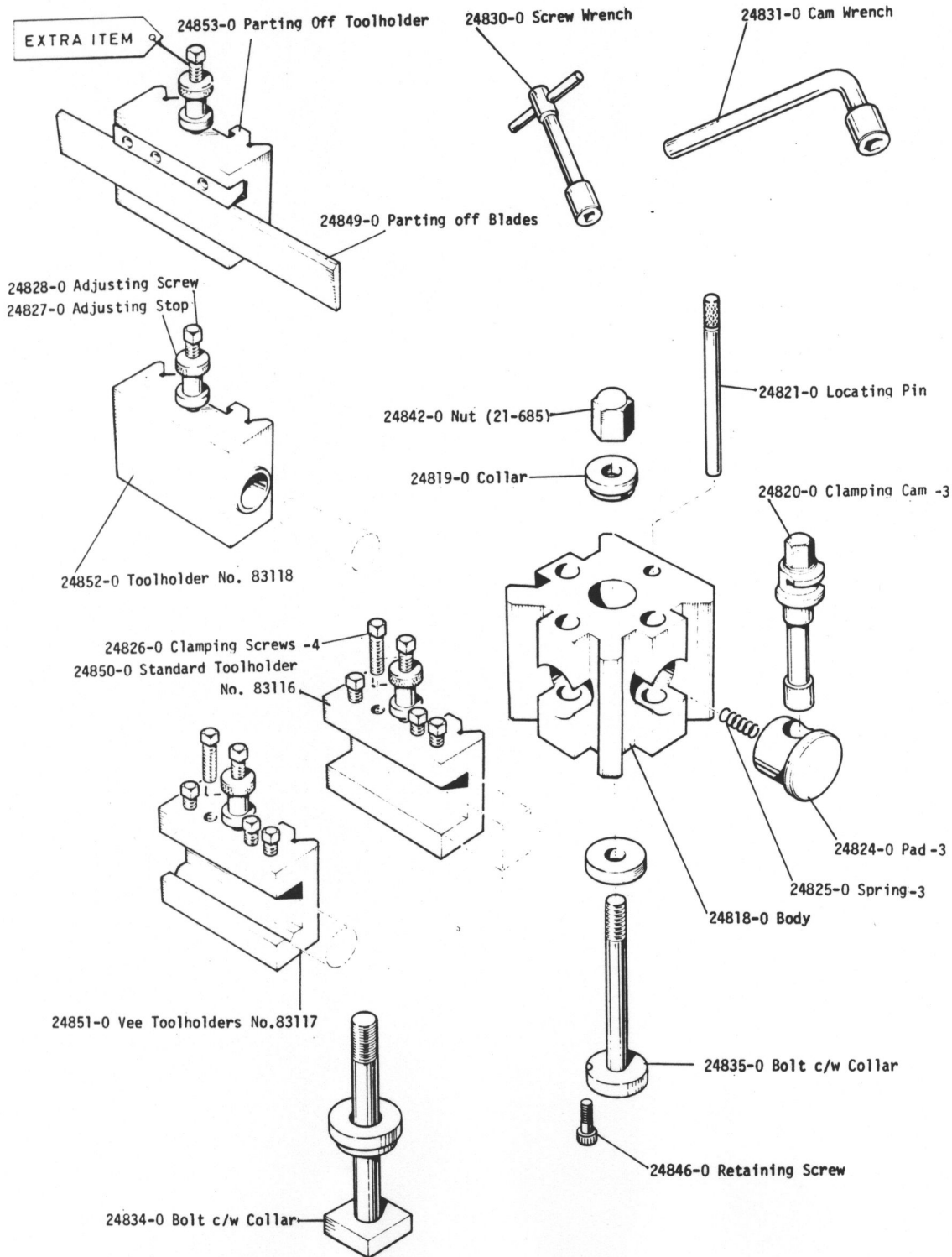
BAN-15-7008



NOTE: - read and use in conjunction with appropriate wiring diagram.

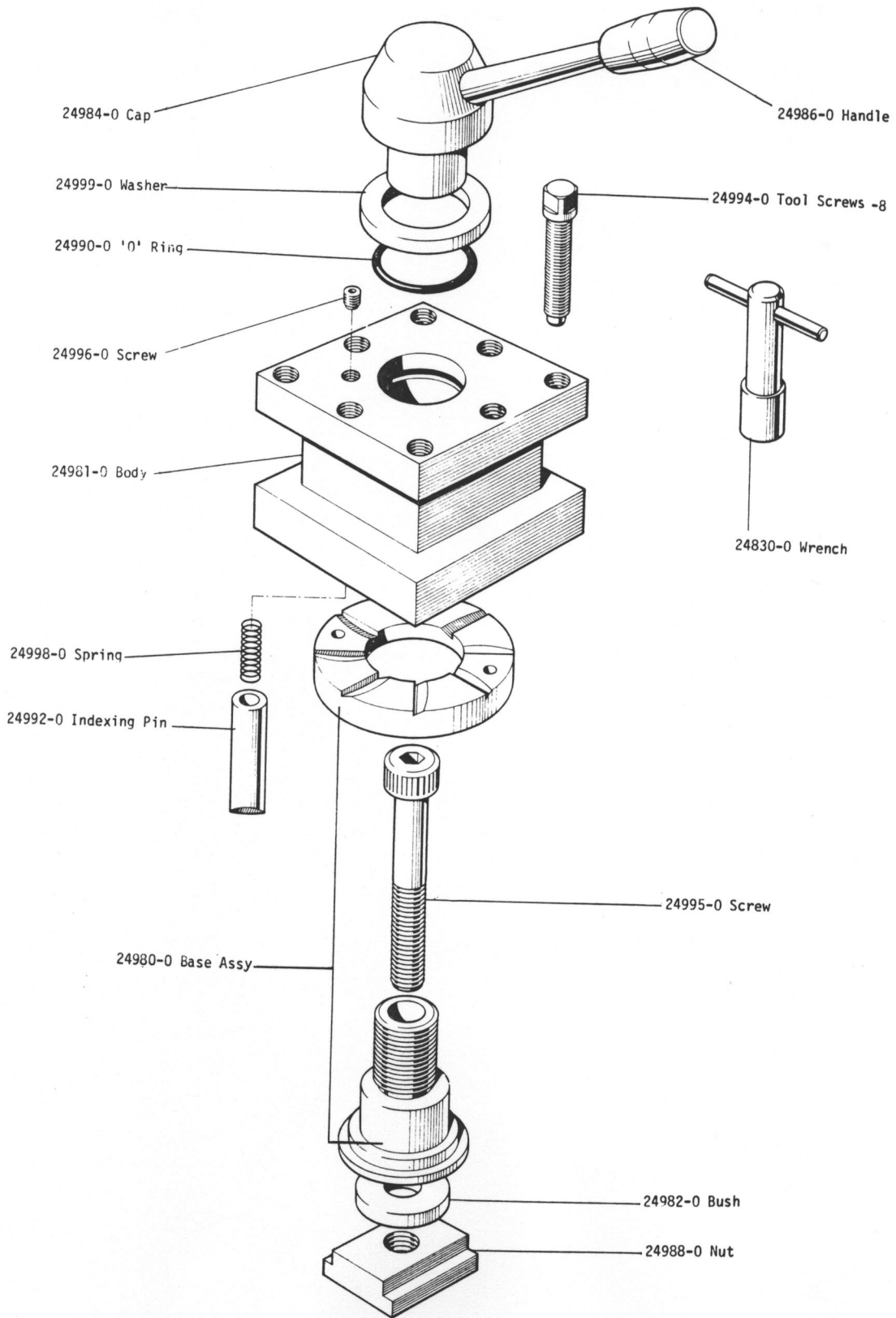


# QUICK CHANGE TOOLPOST



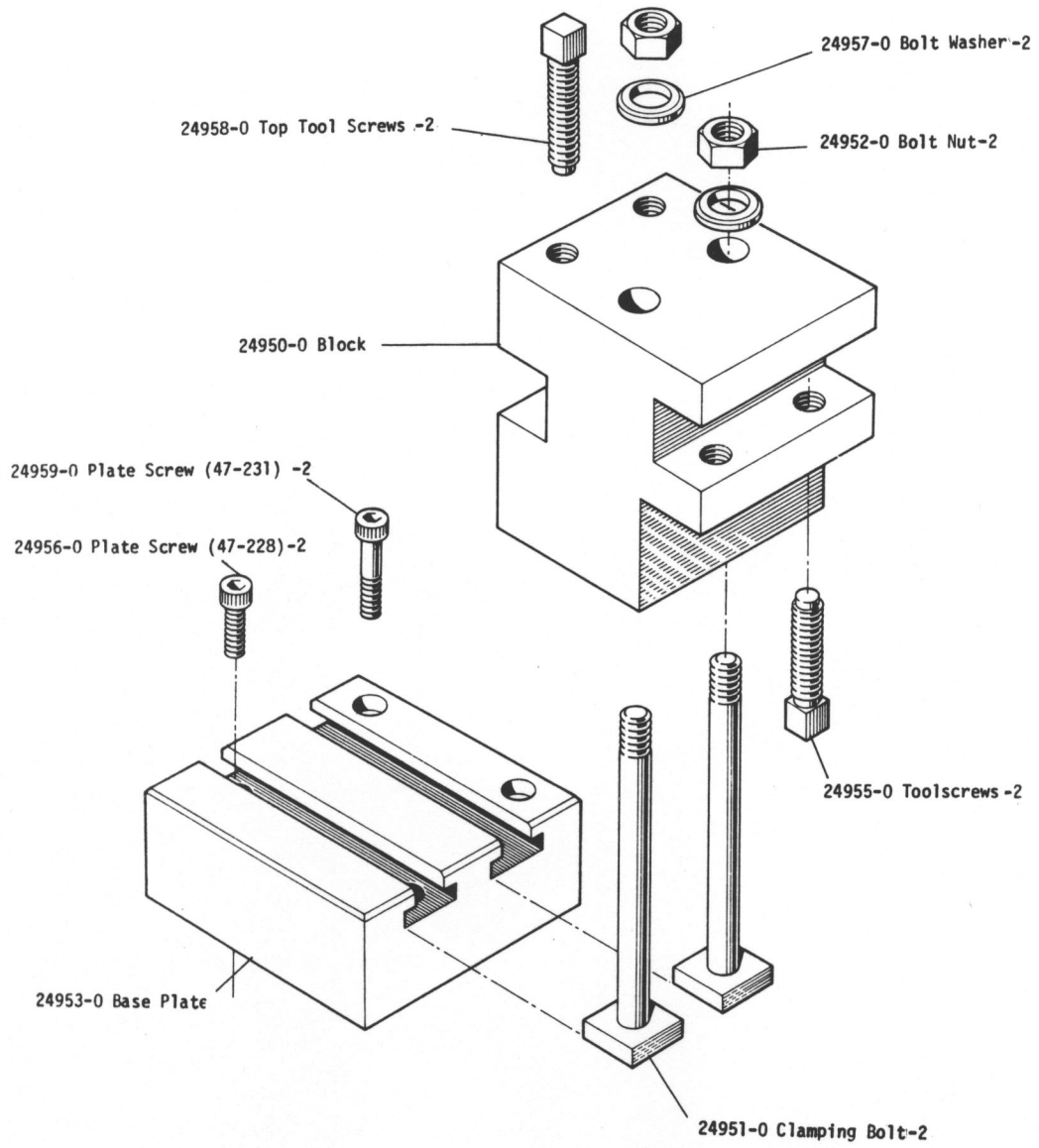
**8 POSITION TOOLPOST**

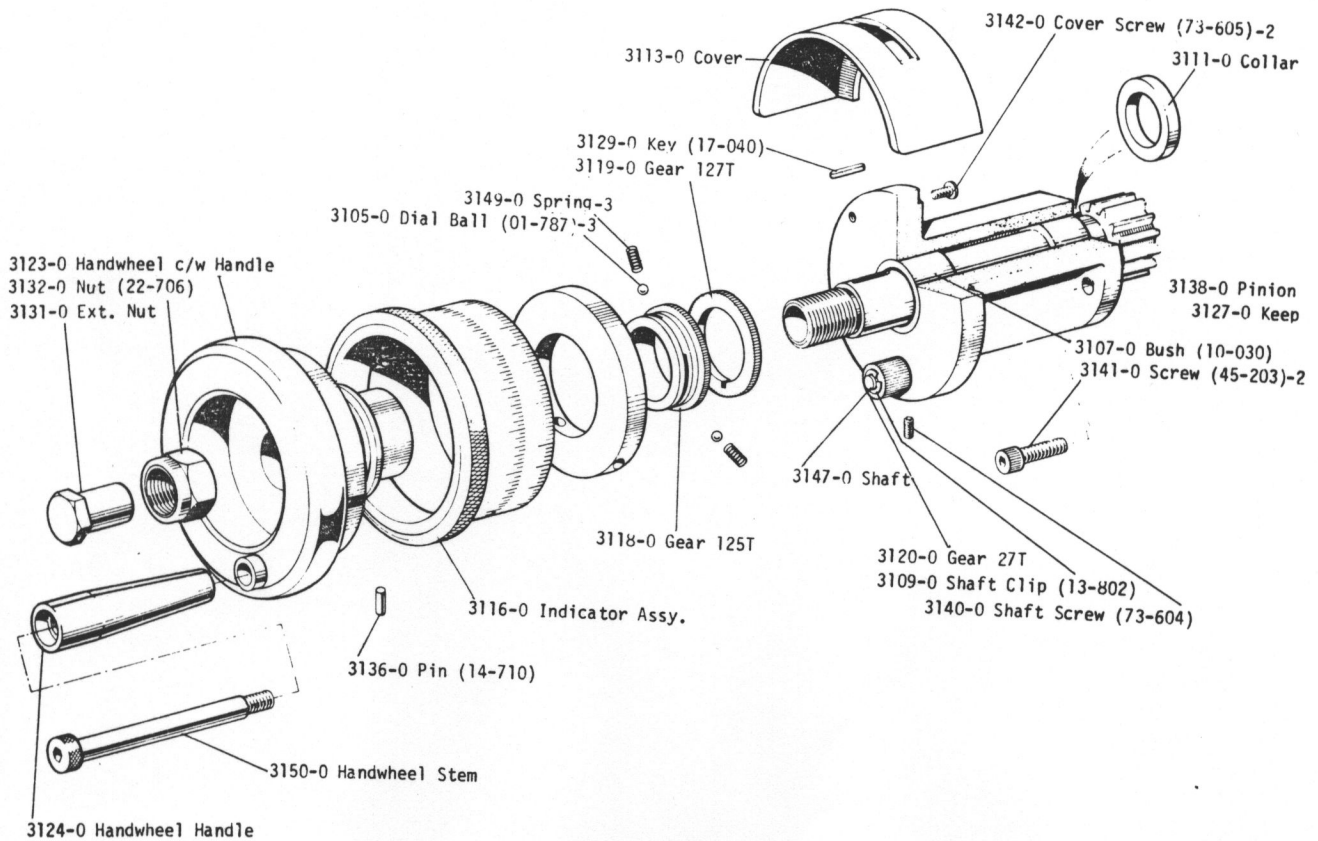
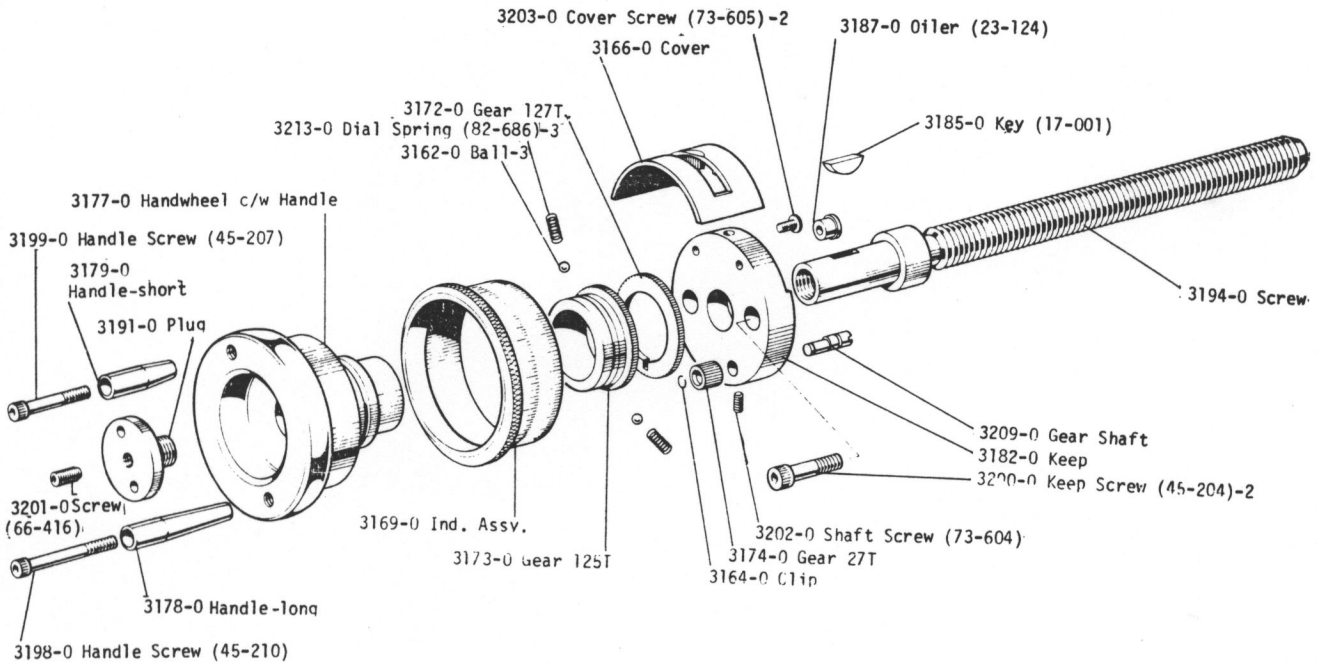
FROM SER. NO. AAI  
TO SER. NO.

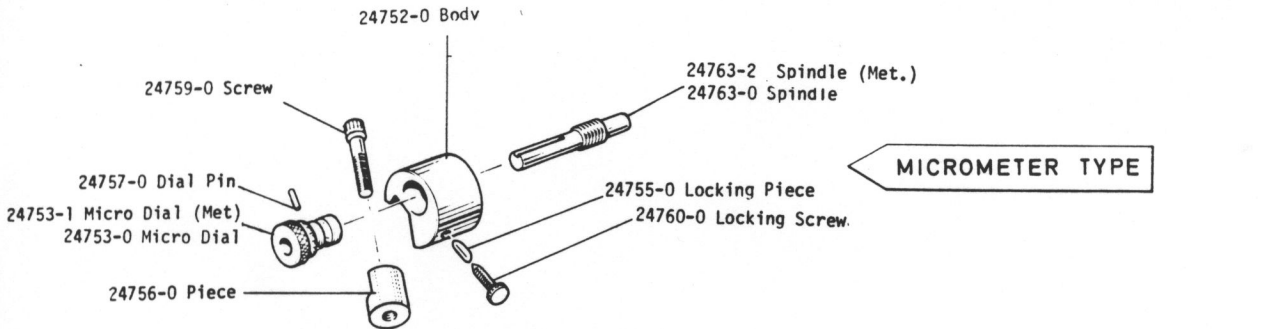


**REAR TOOLPOST**

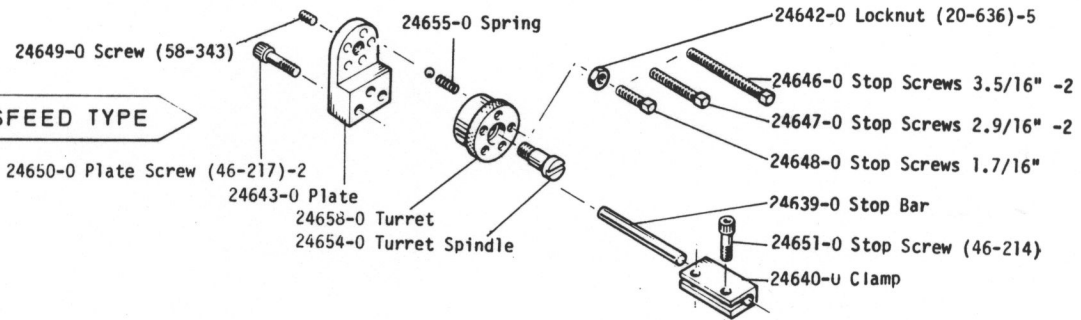
FROM SER. NO. AAI  
TO SER. NO.



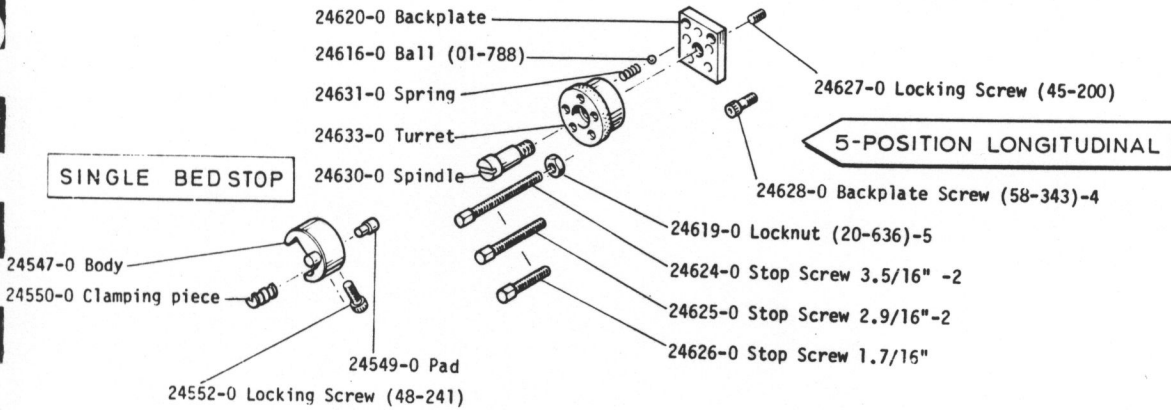




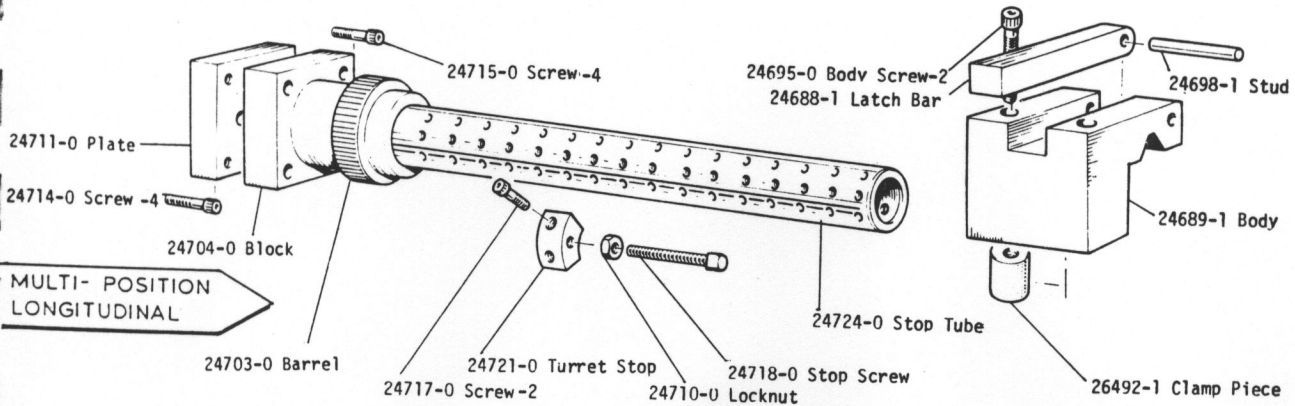
**5- POS. CROSSFEED TYPE**



**SINGLE BED STOP**

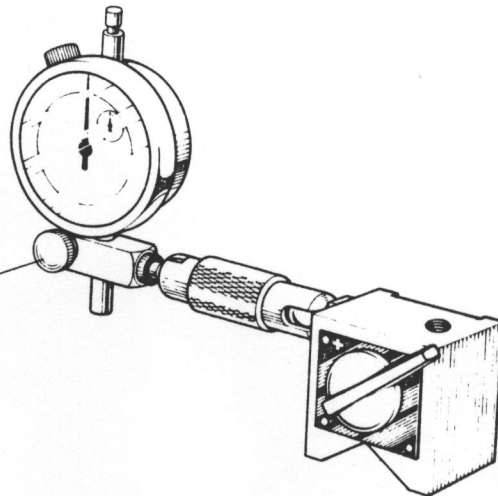
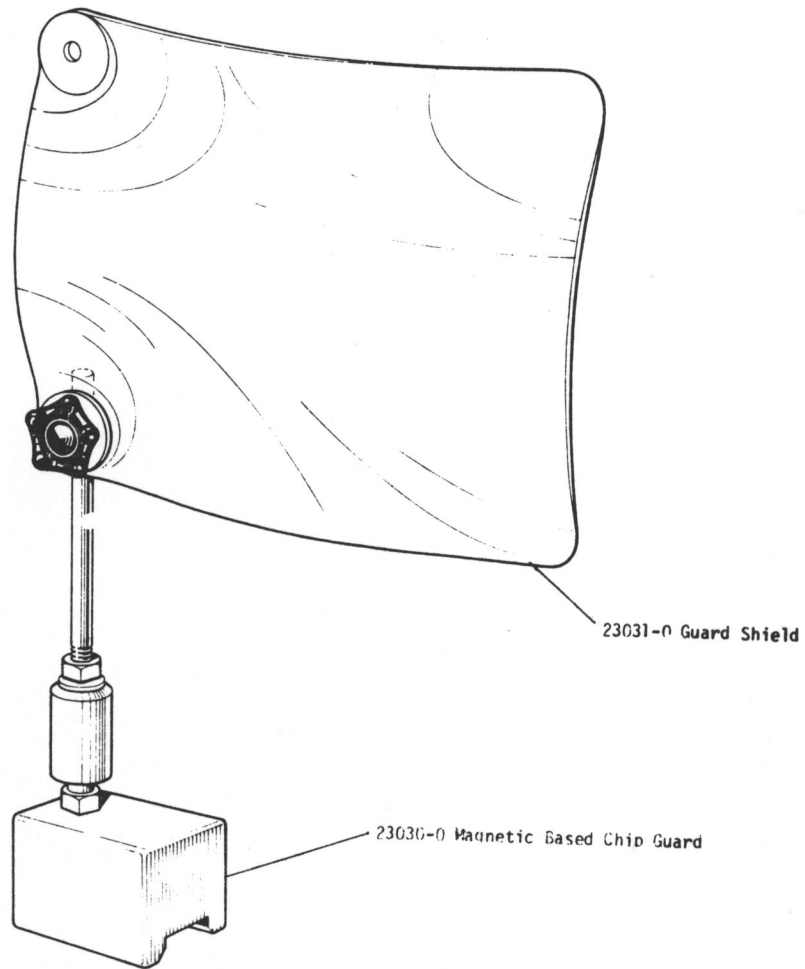


**MULTI- POSITION LONGITUDINAL**



**MAGNETIC CHIP GUARD/DIAL INDICATOR**

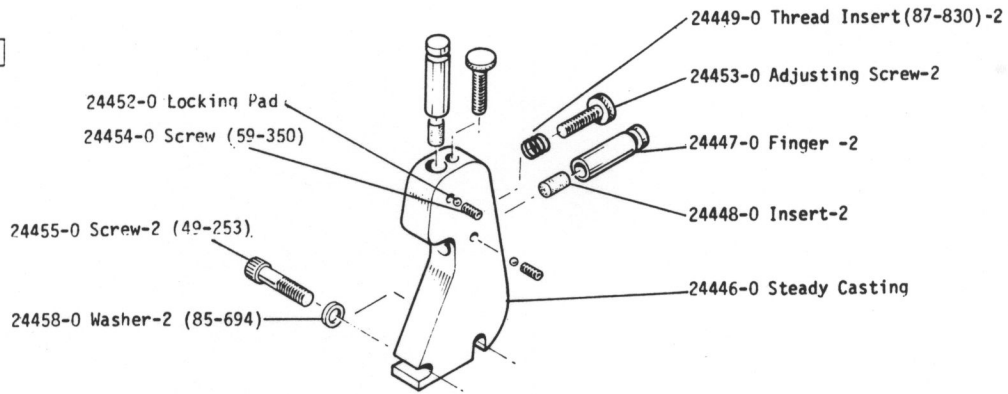
FROM SER. NO. AAI  
TO SER. NO.



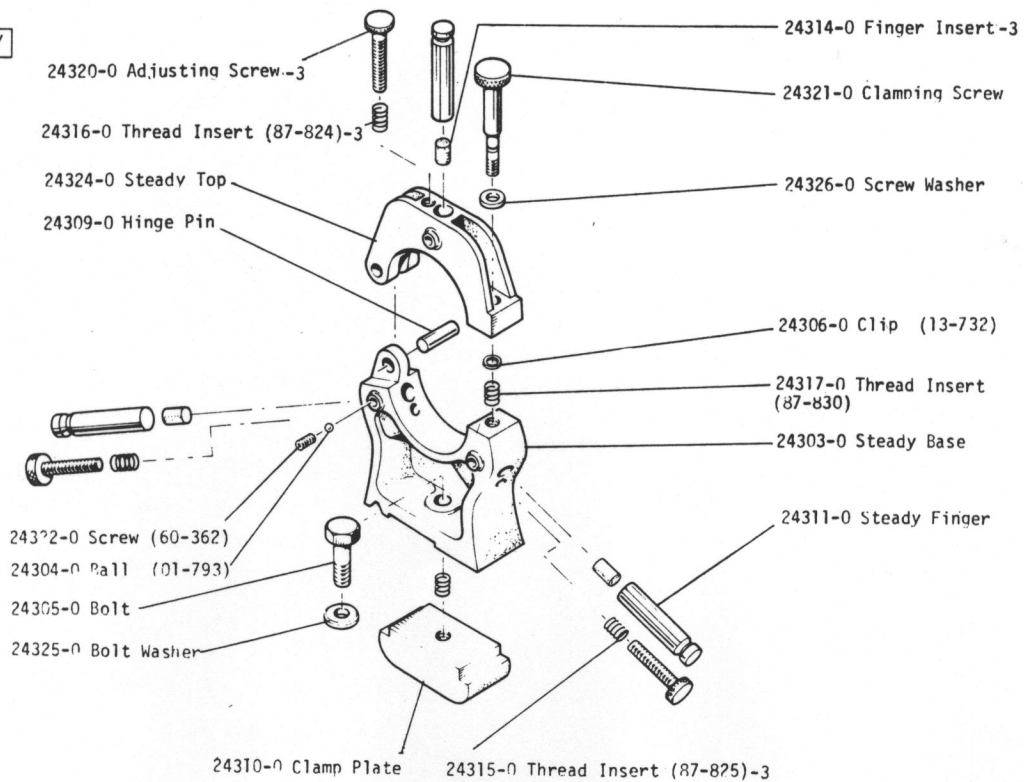
23032-0 Magnetic Based Dial Indicator Assy/English

23033-0 Magnetic Based Dial Indicator Assy/Metric

**TRAVELLING**



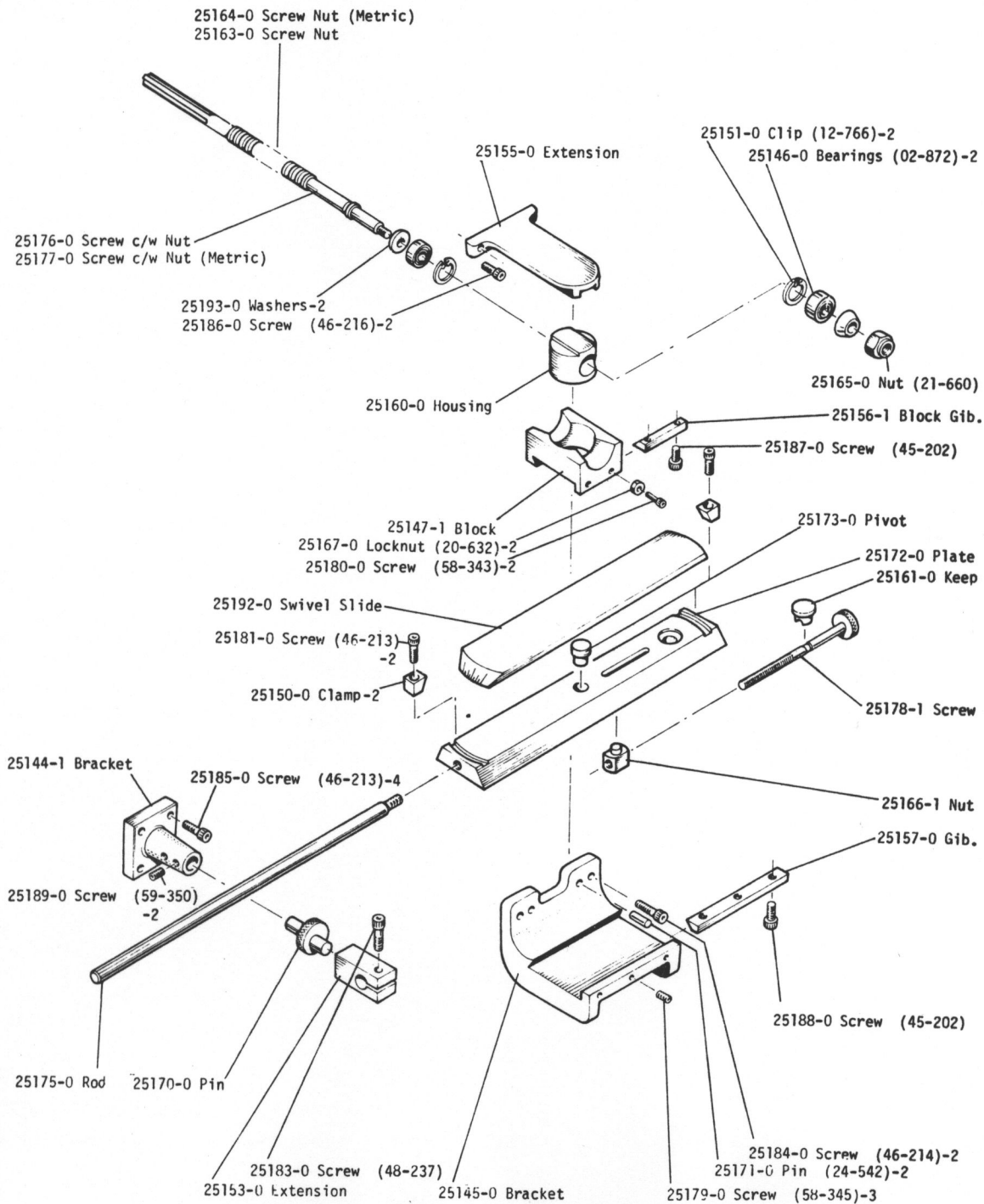
**STATIONARY**





# TAPER TURNER ATTACHMENT

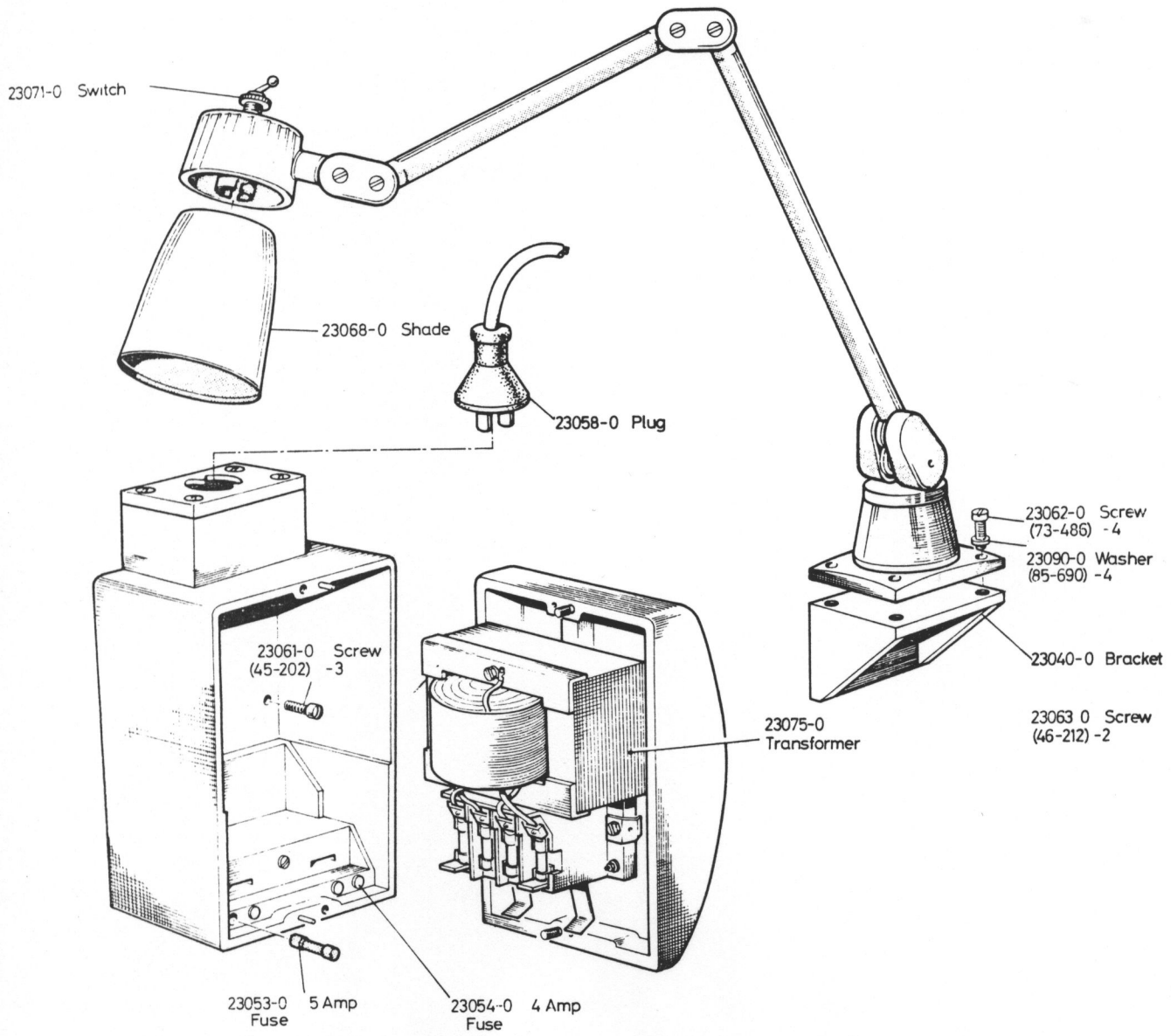
FROM SER. NO. AAI  
TO SER. NO.



COM-07-7008

# LOW VOLT LIGHTING

FROM SER. NO. AA1  
TO SER. NO.



BAN-20-7102

STANDARD PARTS REFERENCE LIST

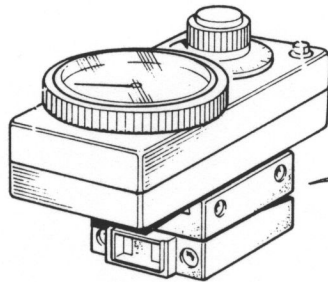
<u>Description</u>	<u>Section</u>
Balls	01
Bearings-Ball Journal	02
Bearings - Roller	03
Belts - Vee	07
Bolts - Hex Head	08
Bushes	10
Circlips External	11
Circlips Internal	12
Circlips Special	13
Spring Dowels	14
Electrical - Miscellaneous	15
Handles	16
Keys	17
Knobs	18
Motors	19
Nuts	20
Lock Nuts	21
Nuts - Miscellaneous	22
Oilers	23
Mills Pin	24
Oil Rings	26
Oil Rings - Miscellaneous	27
10 x 24 t.p.i. Cap Screws - Hex Socket Head	45
1/4 in. U.N.C. Cap Screws - Hex Socket Head	46
5/16 in. U.N.C. Cap Screws - Hex Socket Head	47
3/8 in. U.N.C. Cap Screws - Hex Socket Head	48
7/16 U.N.C. Cap Screws - Hex Socket Head	49
1/2 in. I.N.C. Cap Screws - Hex Socket Head	50
10 x 24 t.p.i. C/Sunk Screws - Hex Socket Head	53
10 x24 t.p.i. Cup Point Screws - Hex Socket Head	58
1/4in. U.N.C. Cup Point Screws - Hex Socket Head	59
5/16 in. U.N.C. Cup Point Screws - Hex Socket Head	60
3/8 in. U.N.C. Cup Point Screws - Hex Socket Head	61
10 x 24 t.p.i. 1/2 Dog Screws - Hex Socket Head	66
1/4 in. U.N.C. 1/2 Dog Screws - Hex Socket Head	67
Special Screws	73
Oil Seals	79
Oil Sights	30
Spanners & Wrenches	81
Springs	82
Switches	83
Locking Washers	84
Standard Washers	85
Washers Miscellaneous	86
Thread Inserts	87
Miscellaneous	88

# TRAV·A·DIAL

---

25903-0 Trav-a-dia assy English  
25904-0 Trav-a-dia assy Metric

25909-0 wiper pad

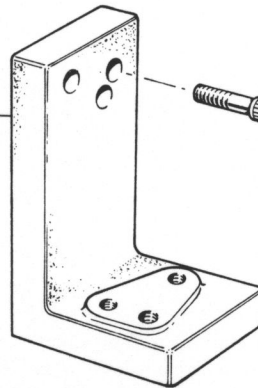


25906-0 screws -3  
(.46 213)

25908-0 loading spring



25905-0 bracket



25907-0 screws  
(.46-213)

SPARE PARTS LIST APPENDIX 1

SPECIFICATIONS OF STANDARD ITEMS

FROM SER.NO. AA1-  
TO SER.NO.

Ref. No.

01-787 3/16 Dia. Steel Ball  
 01-788 1/4 Dia. Steel Ball  
 01-793 1/4 Dia. Phosphor Bronze  
 01-794 7/32 Dia. Steel Ball

02-872 10 m/m x 28 m/m x 8 m/m Hoffmann. A10  
 02-874 15 m/m x 35 m/m x 8 m/m Hoffmann. A.15

03-891 9/16 bore x 3/4 o.d. x 1/2 in. long Ina SC98 Needle Roller  
 03-892 17 m/m x 40 m/m x 13 m/m KGS Taper Roller KE30203  
 03-896 25 m/m x 52 m/m x 16 m/m KGS Taper Roller KE30205  
 03-898 1.1/8 x 1.3/8 x 1/2 Ina SC188 Needle Roller  
 03-912 111, 050/111,090 C Gamet  
 03-913 112, 045/112, 085 C Gamet

07-142 A34 x 1/2 in. wide x 5/16 Thk.  
 07-932 A33 x 1/2 in. wide x 5/16 Thk.  
 07-934 A35 x 1/2 in. wide x 5/16 Thk.

08-013 1/2 U.N.C. x 1.1/4 in. long

10-030 Glacier 11 DU 14  
 10-910 CT51 x 7/8 in. long  
 10-913 CT174 x 5/8 in. long  
 10-914 BS2 x 1.1/2 in. long  
 10-918 CT175 x 3/4 in. long  
 10-921 CT15 x 5/8 in. long  
 10-929 BS15 x 1 in. long  
 10-941 BS2 x 5/8 in. long  
 10-951 BS105 x 1.9/16 in. long  
 10-952 CT 15 x 3/4 in. long  
 10-954 CT 18 x 1 in. long  
 10-965 FCT 60 x 1/2in long  
 10-968 FCTSA x 5/8 in. long  
 10-969 FGH40A x 1.3/8 in. long  
 10-975 BS2 x 1.9/16 in. long  
 10-995 FCT 201 x 13/16" long  
 10-997 BS 69 x 7/8" long

11-736 1/2 dia. Anderton type 1400  
 11-737 1/2 dia. Anderton type 1500. E396  
 11-740 1/2 dia. Seeger  
 11-743 5/8 dia. Anderton type 1400  
 11-745 3/4 dia. Anderton type 1400  
 11-749 7/8 dia. Anderton type 1400  
 11-753 1 dia Anderton type 1400  
 11-777 3/4 dia Anderton type 1500 E580  
 11-782 1/4 dia. Anderton type 1500 E210  
 11-855 7/16 Dia. Anderton type 1500 E343

12-766 28 m/m (1.102) Anderton type 1300

Ref. No.

13-732 3/8 dia. Anderton type 700/37A Ext.  
13-742 9/16 dia. Salter Bowed Ext. type 5101/56  
13-802 Anderton type 1000-15

14-104 1/8 dia. x 3/4 in. long  
14-131 1/4 dia. x 1 in. long  
14-135 1/8 dia. x 1/2 in. long  
14-144 3/16 dia. x 1.1/4 in. long  
14-606 3/16 dia. x 7/8 in. long  
14-607 3/16 dia. x 15/16 in. long  
14-629 1/8 dia. x 7/8 in. long  
14-643 5/32 dia. x 1 in. long  
14-710 1/16 dia. x 1/4 in. long

15-149 A.E.I. 'T' junction 3/4 in. conduit thrd.type

16-842 3/8 bore x 3 in. long cream  
16-844 3/8 bore x 3 in. long black

17-001 No.3. Woodruff  
17-002 No.9. Woodruff  
17-040 1/8 x 1/8 x 3/4 ig. round ends BS 46

18-145 1.1/4 dia. x 3/8 U.N.C. Red  
18-830 1.1/2 dia. x 7/16 U.N.C. Black  
18-836 1.1/4 dia. x 3/8 U.N.C. Black  
18-837 1.1/4 dia. x 3/8 U.N.C. Cream  
18-838 1 dia x 3/8 U.N.C. Black  
18-841 Reverse and two speed switch knob

19-165 A.E.I. 1 hp 200/240/380/440. BK2410c. Speed 1400-1730  
19-166 A.E.I. 2/i hp 380/420/3/50/60. Frame KNX.C164

20-620 1/4 U.N.C. Std. Nut  
20-621 5/16 U.N.C. Std. Nut  
20-623 7/16 U.N.C. Std. Nut  
20-632 10 x 24 T.P.I. Std.Nut  
20-636 5/16 U.N.C. Thin Nut  
20-637 3/8 U.N.C. Thin Nut  
20-638 7/16 U.N.C. Thin Nut

21-651 7/16 U.N.F. Std. Lock nut  
21-654 5/8 U.N.F. Std. Lock Nut (Nyloc)  
21-658 1/4 U.N.C. Std. Lock Nut  
21-660 3/8 U.N.C. Std. Lock Nut (Simmonds Aero)  
21-671 3/8 U.N.F. Thin Nut 'T'  
21-685 5/8 U.N.C. Thin Nut 'T' (Simmonds NT3N206)

22-146 1/4 B.S.F. Nylock (Simmonds Type 'T')  
22-663 1/2 U.N.C. Wedglok  
22-692 4 BA Std. Nut  
22-695 1/4 B.S.F. Std. Locknut  
22-706 Thin type 5/8 x 18 T.P.I. U.N.F. Nyloc

Ref. No.

23-124 1/4 Dia. Springwell oil cup  
23-827 1/4 Dia. Garland diaphragm oiler

24-525 1/8 Dia. x 9/16 in. long G.P.3.  
24-527 1/8 Dia. x 3/8 in. long G.P.4.  
24-531 5/32 Dia. x 3/8 in. long G.P.3.  
24-533 5/32 Dia x 3/4 in. long G.P.3.  
24-534 5/32 Dia. x 1 in. long G.P.3.  
24-535 5/32 Dia. x 1.1/4 in. long G.P.3.  
24-536 3/16 Dia. x 1/2 in. long G.P.1.  
24-538 3/16 Dia. x 1.1/8 in. long G.P.1.  
24-542 3/16 Dia. x 3/4 in. long G.P.3.  
24-543 3/16 Dia. x 7/8 in. long G.P.3.  
24-545 3/16 Dia. x 1/4 in. long G.P.3.  
24-548 3/16 Dia. x 11/16 in. long G.P.2.  
24-549 3/16 Dia. x 1.3/4 in. long G.P.3.  
24-553 1/4 Dia x 1 in. long G.P.2.  
24-572 5/16 Dia. x 1.in. long G.P.3.  
24-574 5/16 Dia. x 1.1/2 in. long G.P.3.  
24-575 5/16 Dia. x 1.3/4 in. long G.P.3.

26-848 11/16 Dia. x .103 Thk. Pioneer PO/08706810  
26-851 1 Dia. x .139 Thk. Pioneer PO/12510013

27-137 Dowty MK7 list 4 pp 73c  
27-138 Dowty Mk24 list 5 pp 49c  
27-141 Superfect SH/96/16  
27-846 .424 i.d. x .070 Thk. Pioneer PO/06204310  
27-858 POS/2506/MP/658

45-201 10 x 24 t.p.i. x 3/8 in. long  
45-202 10 x 24 t.p.i. x 1/2 in. long  
45-203 10 x 24 t.p.i. x 5/8 in. long  
45-204 10 x24 t.p.i. x 3/4 in. long  
45-205 10 x 24 t.p.i. x 7/8 in. long  
45-206 10 x24 t.p.i. x 1 in. long  
45-207 10 x24 t.p.i. x 1.1/4 in. long  
45-209 10 x24 t.p.i. x 1.3/4 in. long  
45-210 10 x 24 t.p.i. x 2in. long

46-212 1/4 U.N.C. x 1/2 in. long  
46-213 1/4 U.N.C. x 5/8 in. long  
46-214 1/4 U.N.C. x 3/4 in. long  
46-215 1/4 U.N.C. x 7/8 in. long  
46-216 1/4 U.N.C. x 1 in. long  
46-217 1/4 U.N.C. x 1.1/4 in. long  
46-218 1/4 U.N.C. x 1.1/2 in. long  
46-219 1/4 U.N.C. x 1.3/4 in. long

Ref. No.

47-244 5/16 U.N.C. x 5/8 in. long  
47-225 5/16 U.N.C. x 3/4 in. long  
47-226 5/16 U.N.C. x 7/8 in. long  
47-227 5/16 U.N.C. x lin. long  
47-228 5/16 U.N.C. x 1.1/4 in. long  
47-229 5/16 U.N.C. x 1.1/2 in. long  
47-230 5/16 U.N.C. x 1.3/4 in. long  
47-231 5/16 U.N.C. x 2in. long  
47-232 5/16 U.N.C. x 2.1/4 in. long  
47-233 5/16 U.N.C. x 2.1/2 in. long  
  
48-237 3/8 U.N.C. x 5/8 in. long  
48-249 3/8 U.N.C. x 4in. long  
  
49-253 7/16 U.N.C. x 2in. long  
  
50-260 1/2 U.N.C. x 1.1/2 in. long  
  
53-305 10 x24 t.p.i. x 3/4 in. long  
  
58-243 10 x 24 t.p.i. x 1/4 in. long  
58-344 10 x 24 t.p.i. x 5/16 in. long  
58-345 10 x 24 t.p.i. x 3/8 in. long  
58-349 10 x 24 t.p.i. x 3/4 in. long  
  
59-350 1/4 U.N.C. x 1/4 in. long  
59-352 1/4 U.N.C. x 3/8 in. long  
59-356 1/4 U.N.C. x 3/4 in. long  
  
60-362 5/16 U.N.C. x 3/8 in. long  
60-366 5/16 U.N.C. x 3/4 in. long  
  
61-371 3/8 U.N.C. x 1/2 in. long  
  
66-410 10 x 24 t.p.i. x 3/16 in. long  
66-411 10 x 24 t.p.i. x 1/4 in. long  
66-416 10 x 24 t.p.i. x 3/4 in. long  
  
67-418 1/4 U.N.C. x 5/16 in. long  
67-419 1/4 U.N.C. x 3/8 in. long  
67-421 1/4 U.N.C. x 1/2 in. long  
  
73-143 1/4 U.N.C. x 3/8 in. long domed head  
73-169 10 x 24 t.p.i. x 1/4 in. c/sunk screw (slotted)  
73-486 2 BA x 1/2 in. long cheese head  
73-514 1/8 U.N.C. x 3/8 in. long brass round head  
73-523 5/16 U.N.C. x lin. wedglok set screw  
73-543 1/4" U.N.C. x 5/8" long domed head screw  
73-544 4 BA x 5/8" long C/SK head screw  
73-554 5/16" U.N.C. x 3/8 long cup point wedglok socket set screw  
73-564 1/4" U.N.C. x 3/4" long cap head screw type CX HD  
73-604 6 BA x 1/8" long half dog  
73-605 No. 4-40 U.N.C. x 1/4" long SKT. HD Dome Hd.  
73-619 2-56-2A U.N.C. x 1/4 long C/Sunk Hd.  
73-620 10-32-2A U.N.F. x 5/8 long C/Sunk Hd.



Ref. No.

79-062 Weston. W16211237.R  
79-071 Angus. MS012  
79-865 11/16 i.d. x 1.5/8 o.d. x 5/16 wide. W16210631.R4

80-871 1.1/4 o.d. Tecalemit. IC4610

81-151 15/16 a/f x 3/4 a/f open end spanner  
81-152 9/16 a/f x 11/16 a/f open end spanner  
81-153 7/16 sq. x 1/2 a/f combination spanner  
81-154 15/16 a/f x 11/16 a/f box Spanner  
81-155 Tommy Bar  
81-156 3/8 a/f Allen hexegon key  
81-157 5/16 a/f Allen hexegon key  
81-158 7/32 a/f Allen hexegon key  
81-159 3/16 a/f Allen hexegon key  
81-161 1/8 a/f Allen hexegon key  
81-162 3/32 a/f Allen hexegon key

82-064 707-0040 0.240 Dia x 9/16 in. free length  
82-065 707-0035 0.312 Dia. x 1.7/16 in. free length  
82-066 .237 o/d x 1.1/8 in. free length  
82-078 707-0028 0.237 Dia. x 1.1/8 in. free length  
82-105 Flexo 82504  
82-107 Flexo 62604  
82-795 707-0021 1/4 o/d x 1/2 in. free length  
82-802 Flexo 93107  
82-804 Flexo 123106  
82-807 Flexo 223412  
82-828 Flexo 237508  
82-833 Flexo 62603  
82-851 Flexo AP3516  
82-868 Spring Flexo No. 72804  
82-875 Flexo 72806

83-086 Burgess MK.3 BR 600 V 2A Micro switch  
83-087 Moving contact for Crabtree B15 Starter 1600/13  
83-088 Fixed contact for Crabtree B15 Starter 1600/11  
83-089 Crabtree cable clamp assy 1600/19  
83-092 Overload release unit Crabtree type 16007 3.6 amp.  
83-093 Magnet coil Crabtree type 1600/9/5 380-420 V.  
83-094 Crabtree B15 Starter interior type  
83-095 Crabtree B15 starter moving contact 28011  
83-096 Crabtree series 16021. Aux contact  
83-100 Crabtree contactor magnet 16000/20  
83-150 Crabtree starter type D6 0.75-1 2 A  
83-163 Crabtree B15 D & C Starter 16104/5.  
83-164 Crabtree B15 D & C Starter 16199  
83-167 MEM.1315 AX 15 A isolator  
83-168 Klockner Moeller T2-4/60-102/7.  
83-991 Santon SR1311 PC

84-706 1/2 Dia. bore single coil  
84-708 5/8 Dia. bore single coil  
84-716 1/2 Dia. bore double coil  
84-725 Schnorr disc spring washer type K.620L

Ref. No.

85-690 3/16 Dia. bore  
85-691 1/4 Dia. bore  
85-694 7/16 Dia. bore  
85-695 1/2 Dia. bore x 1. o/d x .092in. W  
85-696 1/2 Dia. bore x 1.1/8 o/d x .062 in. W  
85-698 5/8 Dia. bore  
85-699 3/4 Dia. bore

86-029 3/4 Internal fan disc washer  
86-133 Dowty rubber washer GD1321-3  
86-738 1/4 bore shakeproof  
86-741 3/16 bore x 7/16 o/d x 1/16 Thk. rubber  
86-787 Thrust washer Glacier DU 10  
86-788 Thrust washer Glacier DU 06

87-824 3/8 U.N.C. x 9/16 in. long Helicoil  
87-825 1/2 U.N.C. Helicoil

88-070 3/8 in. solid gas plug  
88-076 1 in. solid gas plug  
88-147 1/4 in. B.S.F. ball joint

FCMA 10385



Registered Trade Mark

standard metric accuracy chart

# COLCHESTER BANTAM

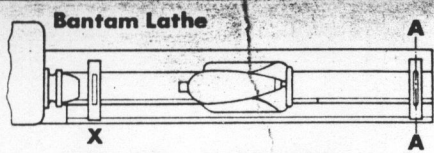
The limits shown are equivalent to, or closer than, the Schlesinger Finish Turning Lathe, the Salmon Sliding and Screw Cutting Lathe and the D.I.N. 8606 Standards of Accuracy.

**THE COLCHESTER LATHE COMPANY LIMITED**  
**COLCHESTER ESSEX ENGLAND**

Telephone: Colchester 5161

Telex 98255

Telegrams: Lathes, Telex, Colchester



**BED LEVEL - TRANSVERSE**

X: -0.0125

	ACTUAL ERROR	TEST	PERMISSIBLE ERROR ACTUAL ERROR
<p><b>SPINDLE CENTER RUNOUT</b></p>	Total Indicator Reading 0 to 0.01 mm  0.0075	<p><b>TAILSTOCK SPINDLE ALIGNMENT - HORIZONTAL</b></p>	Forward at end of Spindle when fully extended 0 to 0.01 mm  0.0025
<p><b>SPINDLE NOSE RUNOUT</b></p>	Total Indicator Reading 0 to 0.01 mm  0.0050	<p><b>TAILSTOCK SPINDLE ALIGNMENT - VERTICAL</b></p>	High at end of Spindle when fully extended 0 to 0.01 mm  0.0025
<p><b>CAM ACTION OF SPINDLE</b></p>	Total Indicator Reading 0 to .01 mm with Indicator on face of spindle  0.0025	<p><b>TAILSTOCK TAPER ALIGNMENT - HORIZONTAL</b></p>	End of 300 mm Test Bar 0 to + 0.01 mm  0.010
<p><b>SPINDLE TAPER RUNOUT</b></p>	Total Indicator Reading at end of 300 mm Test Bar 0 to 0.02 mm at end of Spindle Nose 0 to 0.01 mm 0.0075 0.0050	<p><b>TAILSTOCK TAPER ALIGNMENT - VERTICAL</b></p>	High at end of 300 mm Test Bar 0 to 0.02 mm  0.0050
<p><b>HEADSTOCK ALIGNMENT - VERTICAL</b></p>	High at end of 300 mm Test Bar rising towards Tailstock End 0 to 0.02 mm  0.0020	<p><b>VERTICAL ALIGNMENT OF HEAD AND TAIL CENTRES</b></p>	High at Tailstock 0 to 0.02 mm  0.020
<p><b>CROSS SLIDE ALIGNMENT</b></p>	At end of 300 mm Test Bar 0 to + 0.01 mm  0.0050	<p><b>LEAD SCREW LEAD PER 300 mm</b></p>	To face hollow or concave only on 300 mm diameter 0 to 0.02 mm  0.010
<p><b>HEADSTOCK ALIGNMENT - HORIZONTAL</b></p>			± 0.03 mm  0.030

Inspected by

*James Day*